



The
University
Of
Sheffield.

Humanities
Research
Institute

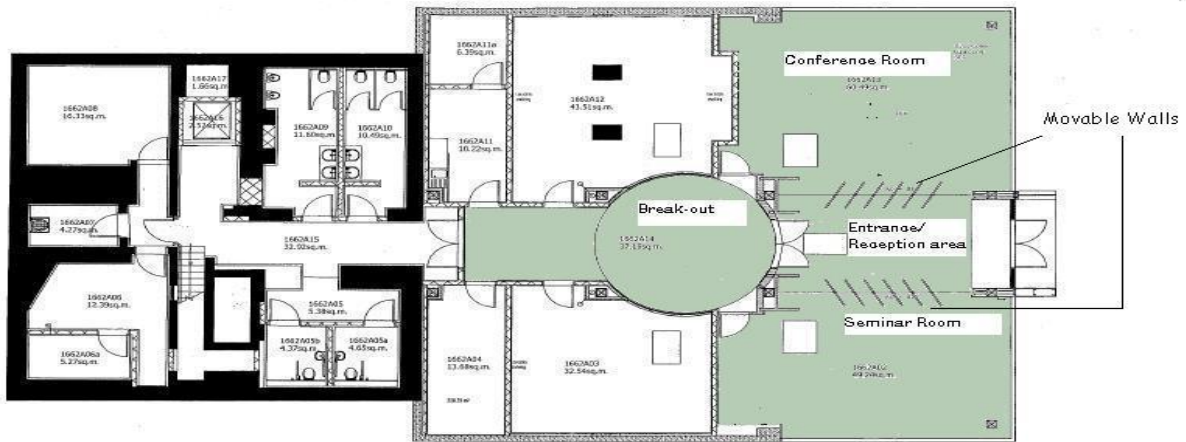
Conference and Seminar Facilities



Douglas Knoop Centre
Humanities Research Institute
34 Gell Street
Sheffield
S3 7QY

<http://www.shef.ac.uk/hri>
hri@sheffield.ac.uk
Tel: 0114 222 9890/9891
Fax: 0114 222 9894

A range of flexible spaces to suit your conference and seminar needs for up to 100 people.



Humanities Research Institute

- Available spaces
- Conference space = c55-60
- Seminar space = c35-40
- Combined space = c100
- Smaller capacities apply if not theatre style format
- Circular break-out - for tea, coffee, lunch, receptions
- Please refer to the Conference Booking form for details of AV equipment and alternative room layouts
- The moving walls can be opened or closed to provide a range of flexible spaces

1. Conference Room



Seats 55-60 people theatre style. Facilities include access grid, laptop, data projector and flip charts.

2. Seminar Room



Seats 18-24 people boardroom style, or up to 40 theatre style. Facilities include laptop, data projector and flip charts.

3. Conference and seminar room combined



Seats approximately 100 people theatre style

4. Break-out space



Ideal for refreshments, exhibitions or workshops.

Contact details:
Secretary Julie Banham 0114 2229890
Assistant Secretary Charlotte Corcoran 0114 2229891
Fax: 0114 2229894
Email: hri@sheffield.ac.uk
Website : www.shef.ac.uk/hri