

UNIVERSITY OF SHEFFIELD
TEACHING ROOM USER GUIDE (2010)

IC Classroom 4



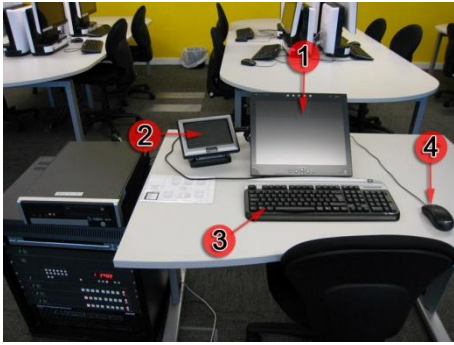
Index

Contents

Switching ON system.....	1
Displaying lectern PC.....	2
Playing a DVD.....	3
Adjusting volume	4
Displaying workstation PCs	5
On every plasma screen	5
On individual plasma screens.....	6
Switching OFF system	7

If you wish to report a fault or require technical assistance, please contact Teaching Tech via either; tel: 23005/07789941947 or email: teaching-tech@shef.ac.uk

Switching ON system



Overview:

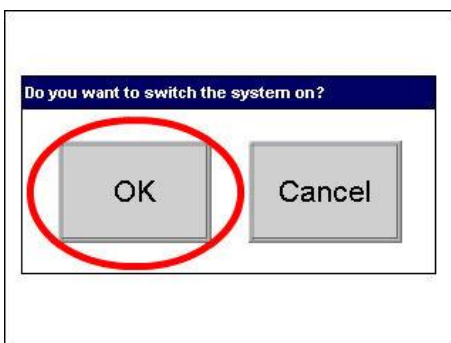
1. Sympodium (interactive monitor)
2. AMX touch screen panel
3. Keyboard
4. Mouse



Touch AMX touch screen panel to 'wake it up'



Touch AMX touch screen panel again



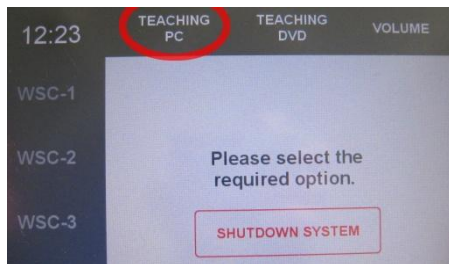
Press 'OK' to continue

Displaying lectern PC

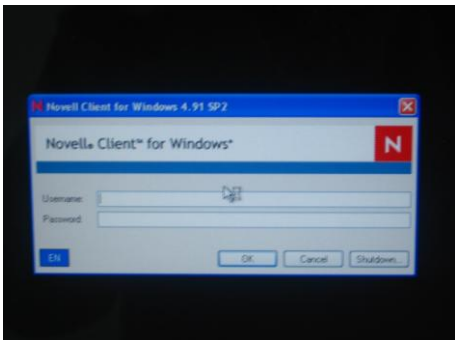
Switch on the system first (see page 1)



Turn on lectern PC (located in lectern cupboard) by pressing the ON switch



Press 'TEACHING PC' on AMX touch screen panel
(The plasma screens will automatically switch on)



Log in using your username and password

If no image is displayed on symposium (interactive display), make sure it is switched on (see 'symposium user guide' for further instructions)

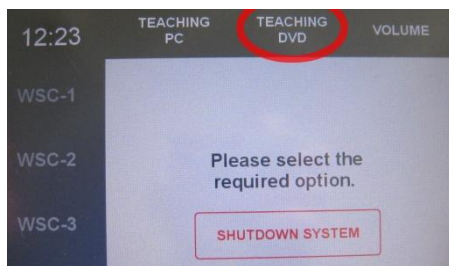
- **To adjust volume**, see page 5

Playing a DVD

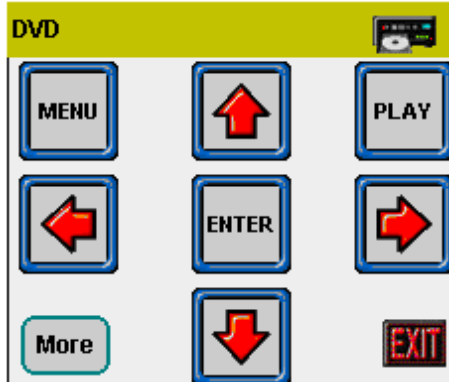
Switch on the system first (see page 1)



Turn on DVD player (located in lectern cupboard) by pressing the ON switch and insert disc

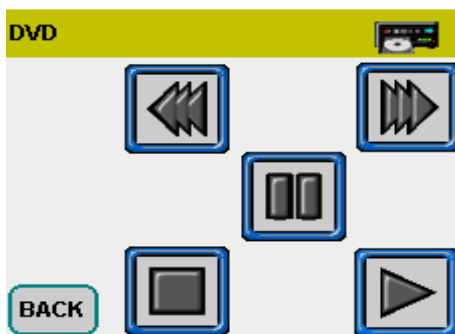


Press 'TEACHING DVD' on AMX touch screen panel



Use the menu screen as you would an ordinary remote control

Press 'More' to gain access to further controls

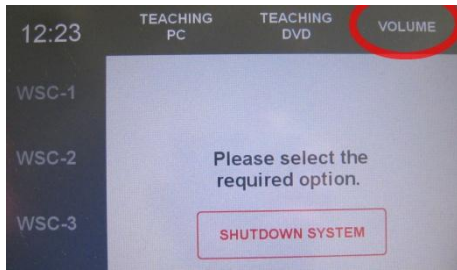


Again, simply press the buttons you require

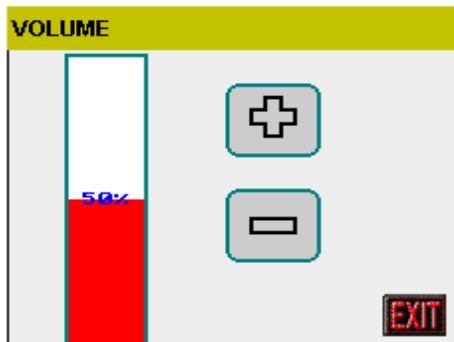
Press 'BACK' to return to the previous menu

- To adjust volume, see page 5

Adjusting volume



Press 'VOLUME' on AMX touch screen panel

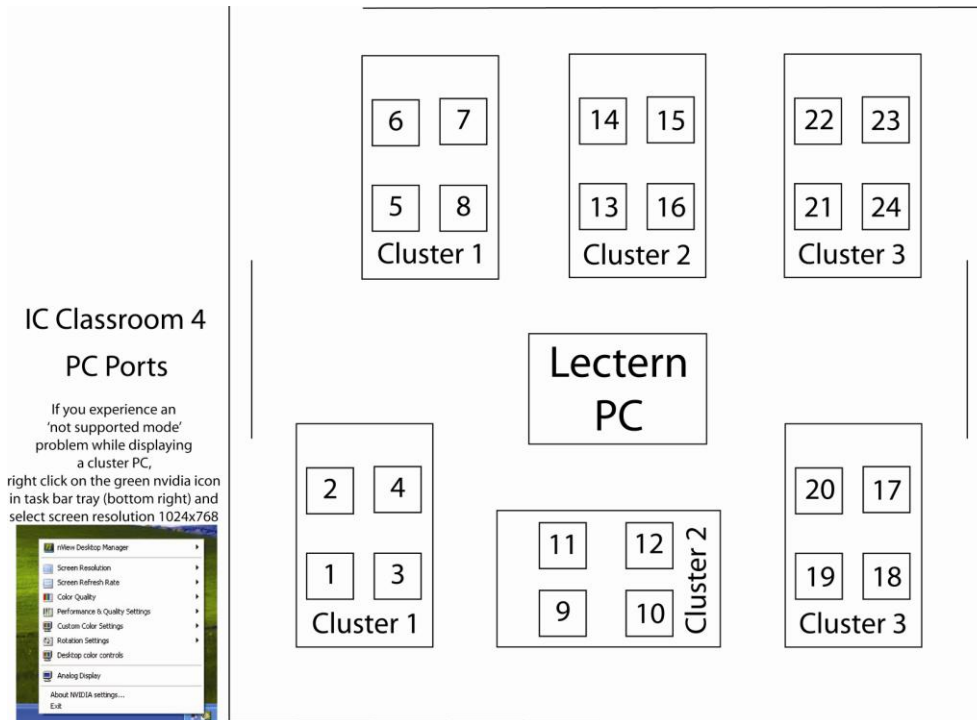


Press '+' or '-' on to adjust volume level

Displaying workstation PCs

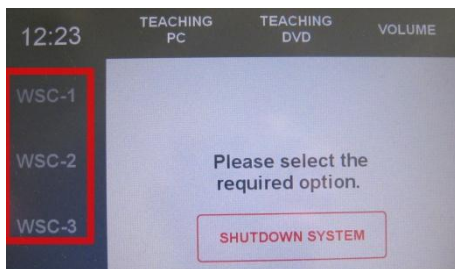
Switch on the system first (see page 1)

Here is a 'bird's eye' view of IC Classroom 4 workstation PC ports

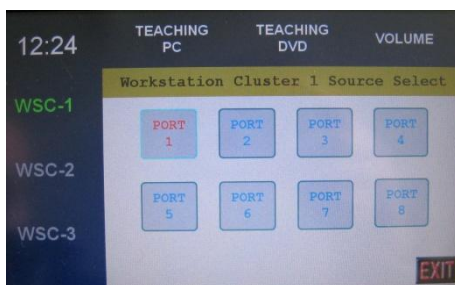


On every plasma screen

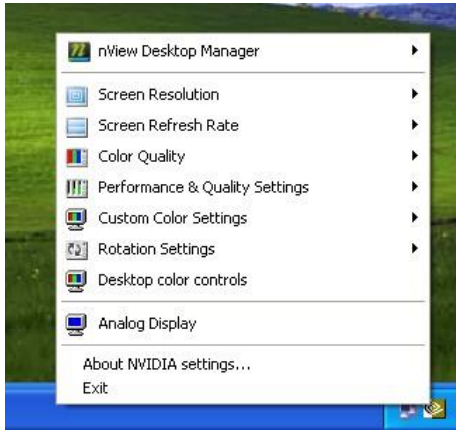
(one PC displayed on all plasma screens, simultaneously)



Press appropriate workstation cluster ('WSC-1', 'WSC-2' or 'WSC-3') on AMX touch screen panel



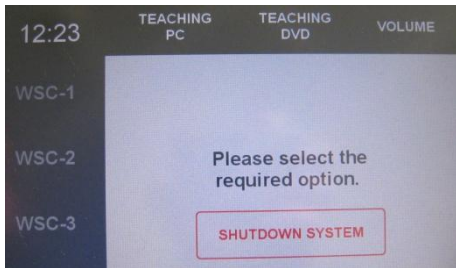
Press appropriate workstation PC port number



- If you experience an 'not supported mode' problem while displaying a workstation PC;
1. right click on the green nvidia icon in the task bar tray (bottom right of screen on particular workstation PC, NOT lectern PC)
 2. select resolution 1024x768

On individual plasma screens

(three different PCs displayed on three different plasma screens)



SHUTDOWN lectern AMX touch screen panel (see page 8)



Touch each workstation cluster AMX touch screen panel to wake it up (located on wall next to each plasma screen)

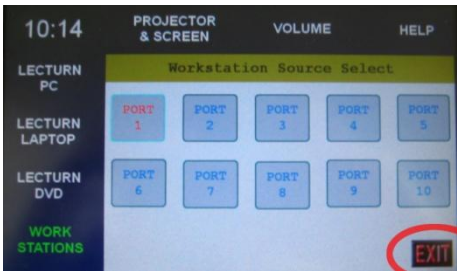


Press appropriate workstation PC port number

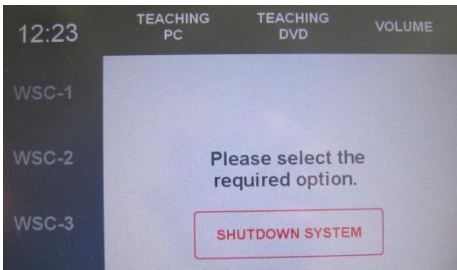
Switching OFF system



Shut down teaching PC by clicking 'START' – 'SHUT DOWN' – 'SHUT DOWN AND POWER OFF'



Press 'EXIT' on the bottom right of lectern AMX touch screen panel



Press 'Shutdown System'



Press 'SHUTDOWN FULL SYSTEM' (The plasma screens will automatically switch off)