



The
University
Of
Sheffield.

Department
Of
Sociological
Studies.

A smiling woman with dark hair, wearing a white top, a black cardigan, and blue jeans, stands on a paved path. In the background, there is a large stone building with columns and several people talking. The scene is outdoors with trees and a clear sky.

Sociology & Social Policy.

Understanding everyday life

Some of the most important issues of the 21st Century, such as crime, migration, poverty, ageing, nationalism, religion and world hunger, are the subject matter of Sociology and Social Policy. Sociologists try and understand these issues from a theoretical perspective, while Social Policy explores how governments deliver welfare to citizens, and examines how modern societies understand poverty, human need and equality.

Sheffield is a world leading research university that emphasises the importance of research-led teaching. This approach is at the heart of our teaching in Sociological Studies. In the most recent 2008 national ranking of research, our department is placed in the top ten and is internationally renowned in many research areas, including ageing, childhood studies, European society, globalisation, global social policy, crime and criminology and social identity.

We are one of the larger and longer established social science departments in the country. You will undertake your studies in an academically rigorous and supportive environment where we offer you excellent teaching on an enviable range of optional modules taught by experts in the field.

You will also develop a range of valuable generic skills much sought after by employers.

When you graduate from the Department of Sociological Studies you will confidently:

- use a wide range of research techniques
- write clear and concise reports
- analyse and evaluate research data
- argue clearly and effectively on the basis of empirical evidence
- access and retrieve information from a wide variety of sources
- present your thoughts in an organised and articulate way.

Our students are high achievers. Of those who graduated in 2008 from the single honours in Sociology and single honours in Social Policy and Sociology degrees, 78% were awarded first class or upper second class degrees.

There are numerous opportunities to make the most of your time here at Sheffield – from getting involved in a student club or society or volunteering in the local community, to undertaking paid or charitable work. You could also take advantage of our study abroad programme or contribute to our international links to The Gambia and Malta. This kind of experience can give you an edge when it comes to seeking employment. We will make sure you are aware of all the options available to you.

Our aim is to actively engage you in issues explored by Sociology and Social Policy, so that you will graduate as confident Sociologists and/or Social Policy Analysts.

“The University of Sheffield is recognised worldwide for its outstanding academic reputation and excellent facilities. The Sociological Studies department in particular reflects this through the groundbreaking research undertaken by academics each year, many of whom are leaders within their field. Staff in the department create a friendly environment in which support is always on hand, from a range of sources including lecturers, student mentors, personal tutors and course secretaries. The wide variety of modules on offer also enables you to pursue your interests and make positive contributions within areas you feel most passionate about. There are also great opportunities to become more widely involved within the department, including student mentoring and becoming a course rep. Overall, Sheffield is an inspiring city with lots to offer which is why so many students love it here.”

Kate Booker

BA Social Policy and Sociology



Entry requirements

Who are our students?

Many people come straight from school and have done traditional 'A' levels but we attract students of different ages, backgrounds and experience.

Some have studied sociology before, but many have not. Some are returning to education from established careers looking for a change of direction. Others are looking for new opportunities having raised a family. Most of our students come from around the British Isles, others from as far away as Hong Kong or the USA. When you come to Sheffield, we want your time to be challenging but rewarding, stimulating yet studious, and when you leave we want you to have a well developed sociological imagination which will inform your future vocation, whatever that may turn out to be.

Courses	UCAS code	Typical A Level offer
Single Honours for those wishing to specialise: <ul style="list-style-type: none"> • Sociology • Social Policy and Sociology 	L300 LL43	BBB BBB
Dual Honours for those who would prefer to combine their interest in Sociology or Social Policy with another social science or humanities subject. <ul style="list-style-type: none"> • Business Management and Social Policy • English Language and Sociology • History and Sociology • Politics and Sociology • Social Policy and Criminology • Sociology and Business Management 	NL24 QL33 VL13 LL23 ML94 NL2K	ABB (B in GCSE Maths) ABB AAB (with A in History) ABB (to include Politics) ABB ABB (B in GCSE Maths)

Qualifications other than A Levels

We welcome applications from students who have or are undertaking qualifications other than A Levels including Access courses. Full details of other accepted pre-HE qualifications and entry requirements are available in the University Prospectus.

Dual Honours Degrees

Dual degrees offer students an excellent opportunity to develop knowledge and understanding of two complementary areas of interest, offering a roughly equal split between the time spent studying with each department and some require students to have previously studied particular subjects. You will find more information on our web pages about module choice for dual degrees and our partner departments are also happy to provide further information.



"Choosing to go to the University of Sheffield has been one of the best decisions I've made. This department does not disappoint. The staff are extremely knowledgeable and very approachable which makes learning in this department very enjoyable."

Matthew Wong
BA Social Policy & Sociology

Teaching and assessment

Our courses are designed to enable students to broaden and deepen their knowledge and understanding over three years of study and are based on a set of core modules which include research methods and sociological theory. These combine with a wide range of optional modules from the Department of Sociological Studies or other departments across the University.

Shape of the year

The academic year at Sheffield is divided into two 15 week semesters. Your first year begins with an 'Intro Week' when you register, settle into your accommodation, choose your modules and attend our welcome events. You will take half your modules in semester one, between October and December, and the remaining half in semester two, between February and May. Coursework submission and exams take place in December and January for semester one and in May and June for semester two.

Progression

When you graduate with an Honours Degree you will have taken modules to the value of 360 credits over three years. Modules are usually worth 10 or 20 credits and you will take modules to the value of 120 credits each year. You must pass level one to progress into level two, but your level one marks will not influence your final degree. Your final degree classification is determined by marks gained at levels two and three. All Single Honours students, as part of the dissertation module, undertake a substantial research project on a topic of their choice.

Expectations

You will attend a combination of lectures, seminars, and tutorials. Modules are assessed by a mix of essay, unseen examination, presentations and project work. You will be expected to attend all timetabled teaching and to read around topics in advance to enable you to participate in discussion and group projects.

We will provide feedback on your assessed work, and carefully supervise independent research.





Undergraduate Level One

If you choose to take BA (Hons) Sociology or BA (Hons) Social Policy and Sociology, you will undertake a common first year consisting of core modules worth 100 credits and a choice of optional modules from within or outside the department worth 20 credits. Dual Honours degree students will take some of these modules in addition to modules in the partner department.

Core modules	Optional modules
Classical Social Theory Social Divisions in Contemporary Society Sociological Imagination Social Policy and Social Problems Introduction to Social Research Doing Social Research	Globalisation of Culture Gender, Sexuality and Society Understanding Crime Sociology of Capitalism

Undergraduate Level Two

Level two broadens your subject knowledge and understanding as well as consolidating your research skills.

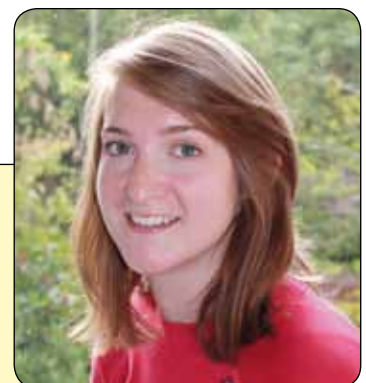
BA (Hons) Sociology core modules	BA (Hons) Social Policy and Sociology core modules
Sociological Theory and Analysis Social Research Principles Social Research Skills	Varieties of Welfare Social Research Principles Social Research Skills Social Policy in a Global Context
Optional modules	
In addition to the core modules at level 2, students are able to select further modules to the value of 60 credits according to their course and availability. These modules include:	
Internet and Society Leisure, Sport and Society Race and Racism Social Policy and Criminology Social Policy in a Global Context Sociological Theory and Analysis Sociology of Crime and Deviance Varieties of Welfare	



Undergraduate Level Three

Level three is about developing depth of knowledge and the specialist modules offered at this level reflect staff expertise and research interests. The dissertation project forms a significant part of study at level three allowing students to develop their own specialist interest through designing and undertaking an independent research study throughout their final year. In addition to the dissertation, our range of level three modules enables you to engage with some of the fundamental and contemporary concerns at the cutting edge of the disciplines of Sociology and Social Policy.

BA (Hons) Sociology core modules	BA (Hons) Social Policy and Sociology core modules
Dissertation	Dissertation
Optional modules	
Ageing and Society Business and Society Children and Society Children and Youth within Developing Societies Crime, History and Society Explorations in Contemporary Social Change Higher Education: Policy, Society and the Individual Internet and Society Learning Disability, Policy and Practice	Men, Masculinities and Gender Relations Migration and Families Religion and Belief Sociology of Evil Sociology of Health and Illness Sociology of the New Genetics Sociology of Whiteness Sociology of Europe and the European Union Tiller Girls and Terrorists: Contemporary Cultural Thought



"It was an amazing opportunity to grow as a person and meet some amazing people from all over the world, and experience safely living and studying in a foreign culture. I loved every minute of it and would highly recommend doing it!"

Denise Chandler

BA Sociology

Study abroad student - Montana State University (USA)

What is a Sheffield Sociological Studies graduate?

We believe that a university degree is more than just studying your chosen subject, we also want you to be able to develop your transferable skills and to offer you the opportunity to enhance your CV by participating in a range of extra-curricula activities which will be both personally fulfilling and attractive to potential employers.

When you graduate you will:

- have a 'sociological studies imagination': be able to think imaginatively as a social scientist, with an in-depth understanding of the social world
- have a wide range of transferable skills and be able to apply them to your chosen path
- understand the social world, and engage with it purposefully and constructively
- have had the opportunity to get involved in a huge variety of voluntary activities.

Your future career

Our graduates are very employable, highly sought after by employers, and have excellent track records in their subsequent careers. The skills training in IT, team work, project planning, presentation and communications that you undertake during your studies will be invaluable whatever you choose to do.

Some of our recent graduates are now working as police officers, market researchers, environmental officers, social workers and in marketing and retail management. Recent graduates are also undertaking a range of Masters level courses including the MA in Social Work and other MA programmes offered in our department. Many of our graduates go on to study for higher degrees at both British and overseas universities.

The University provides a first class careers service to help you move onto the right course or career.

Sheffield Graduate Award

The Sheffield Graduate Award is a way to gain reward for your extra curricula activities while at university. Co-ordinated by the Careers Service, the award allows students at all levels to achieve a university recognised certificate upon graduation, and is endorsed by a number of leading employers. To be eligible, you would complete a portfolio about your activities from four of the following sections undertaken at any time during your studies.

- volunteering
- student jobs and work experience
- activities linked to social and cultural awareness
- extending international horizons and enterprise

Spend a year abroad

The Study Abroad Programme offers undergraduate students the opportunity to spend time studying abroad, either a whole year at level 2 in countries including Australia, Canada or the USA or up to two semesters at levels 2 or 3 studying in Europe. The period spent abroad is a fully recognised part of a Sheffield degree and does not increase the duration of courses.

www.sheffield.ac.uk/ieu

Volunteering and getting involved

There are lots of opportunities to do this in the Department, from becoming a student ambassador to being a representative on the departmental staff/student committee.

www.shef.ac.uk/socstudies/prospetiveug/opportunities

Sociology Society

With over 250 members, Sheffield's Sociology Society (SocSoc) is one of the University's fastest growing societies. The Society aims to entertain, invigorate and support every student that comes to Sheffield. SocSoc organise a wide spectrum of activities and events, including the annual student ball, intra-mural sports, fund-raising events and book sales.



Supporting you

Academic support

We offer a personal tutor system for all our undergraduate students undertaking Single and Dual Honours Degrees in Sociology or Social Policy. You see your personal tutor at least once every semester; to discuss your progress, review your marks and to discuss your future options. Your tutor is also your first point of call if you are having problems which are interfering with your work, in times of crisis or ill health, or if you need support in dealing with problems.

The University and Students' Union also offer a range of welfare and counselling services.

Financial support

The University offers cash awards called bursaries.

The money does not have to be paid back. For the latest information and our online bursary calculator see:

www.sheffield.ac.uk/bursaries

Students with special requirements

We are committed to responding effectively to the needs of disabled and dyslexic students. Let us know what your requirements are and we'll do everything we can to support you.

In the department

We're based in the Elmfield building, where all our staff have their offices and most seminar and small-group teaching takes place. The University Sports Centre is just next door. Student accommodation, the Information Commons, and the Students' Union are all within walking distance.

The Information Commons

Our Information Commons is a brand new building born out of fresh thinking about learning resources for the 21st-Century student. It is open 24 hours a day, seven days a week. The latest IT resources are combined with library facilities and a range of study spaces.

Student Services

The Student Services Information Desk (SSiD) is an important point of contact for you throughout your time at the University. Staff are trained to deal with a wide range of enquiries and the office is a key central point for general information on many University services.

See: www.sheffield.ac.uk/ssid

Mentoring

The Department is a keen participant in the University Mentoring Scheme. This provides extra support to new students. It is entirely voluntary and involves students from Level two and three who meet with new students and stay in contact with them during their first year and sometimes longer.

Accommodation

There's a great choice of accommodation so you can live the way that suits you best: catered or self-catering, city centre or leafy suburb. All of our student housing is within easy walking distance of campus and close to a frequent bus service. As a first-year, you're guaranteed a place in University accommodation, provided you meet a few simple conditions. For details see:

www.sheffield.ac.uk/accommodation

After the first year, most students prefer to rent houses to share with friends. There is plenty of good quality accommodation in Sheffield, and by national comparison, the cost is relatively low.

Sports

The University's sport facilities include a 33m swimming pool with sauna and steam room, bouldering wall, synthetic pitches, squash and tennis courts. Join a team, start your own, or just play for fun – whatever your level, there's something for you. You won't have to look off-campus for a high-tech gym either – we've got one of our own.

www.sheffield.ac.uk/usport





Our Union of Students

It's the best. Winner of countless awards, our Union has live music, club nights, a 400-seat cinema, shops, an advice centre, travel agent, banks and much more. There are 250 different clubs and societies to get involved in – the Sociology Society is one of the most popular – so you'll never be short of something to do or someone to do it with.

www.sheffield.ac.uk/union

Our city

As the fourth largest city in England, Sheffield has all the facilities of a major city, but is small enough to be compact and friendly.

- City centre within easy walking distance of University campus and accommodation.
- Good public transport, including a tram link from the University.
- Convenient centre of England location, close to motorways and about an hour's travel by road or rail from Manchester, Nottingham and Leeds.
- An affordably low cost of living helps your money go further.
- Room to breathe – Sheffield is England's greenest city, with 150 woodlands and 50 public parks, and the Peak District National Park is only fifteen minutes away.
- Sheffield people have a well deserved reputation for friendliness and hospitality, so it's easy to feel at home here.



“Seriously good.”

Virgin 2011 Alternative Guide to British Universities.



The
University
Of
Sheffield.



Department of Sociological Studies
The University of Sheffield
Elmfield
Northumberland Road
Sheffield S10 2TU

T: 0114 222 6400

F: 0114 276 8125

E: sociological.studies@sheffield.ac.uk

www.sheffield.ac.uk/socstudies

Copyright © 2010 The University of Sheffield TUOS242

(Second printing)

This publication is available in different formats.

To request an alternative format:

Tel: +44 (0) 114 222 1303

Email: disability.info@sheffield.ac.uk