



The
University
Of
Sheffield.

- Arts and Science Events
- Music
- Drama
- Lectures & Seminars
- Open Days & Exhibitions

Open Campus

February — May 2010

**National
Science and
Engineering
Week 12-21
March**

**Festival of
Social
Sciences
12-21
March**



University Of Sheffield Events.



For more information on events at the University of Sheffield
see: www.sheffield.ac.uk/whatson



NATIONAL
**SCIENCE &
ENGINEERING
WEEK**

12-21
MARCH
2010

**Jointly organised by the University of Sheffield and
Sheffield Hallam University in collaboration with
local schools, museums, industry and commerce**

National Science and Engineering Week is a national celebration of the very best in British research and innovation. Staff and students from both universities, as well as local industry, museums and other organisations, contribute to one of the largest programmes in the UK.

National Science and Engineering Week is an example of the collaborative spirit that exists between the city's two universities and provides a magnificent opportunity for the people of South Yorkshire to engage with science and technology.

Organisations taking part in Science and Engineering week include:

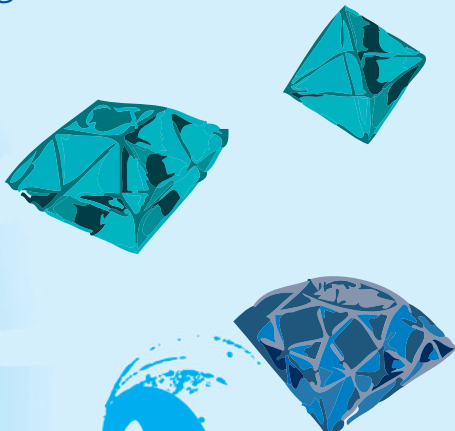
Magna Science Adventure Centre, Museums Sheffield, Kelham Island Museum, Sheffield Amateur Radio Club, The Earth Science Education Unit, Yorkshire Geological Society, Institute of Engineering and Technology

For a full programme of events taking place during National Science and Engineering Week visit the website:

www.scienceweeksy.org.uk

T: 0114 225 4888

E: science-week@shu.ac.uk



Science Week events at The University of Sheffield include:

THE HAWLEY COLLECTION AT KELHAM ISLAND MUSEUM

SPREADING MUCK!

SUNDAY 21 MARCH,
11.15am & 2.00pm

A talk by Ken Hawley as part of 'Science Sunday – Earth to Sheffield!'

Alma Street, Sheffield, S3

Suitable for adults
16 years and above

(children can join the Gallery Preview following the talk)

Locally and internationally-renowned collector Ken Hawley introduces the wide and wonderful selection of tools of the muck spreading and earth-shifting trade to be found in the Hawley Tool Collection.

HAWLEY GALLERY PREVIEW

Join short preview tours of the soon-to-be-opened Hawley Gallery – the new home of the world famous Hawley Tool Collection.

Museum entrance fees apply: £4.00, concessions £3.00, Children free of charge (Gallery Preview and other Science Sunday events). Places are on a first-come, first-served basis from Jeanette Newcombe, Events Team, The University of Sheffield, T: 0114 222 1030 E: j.newcombe@sheffield.ac.uk

For further details on the 'Earth to Sheffield' Family Fun Day on 21 March contact the Kelham Island Museum directly: T: 0114 201 0613, 0114 276 2602

SHAPES AND PATTERNS: CRYSTALS, SNOWFLAKES, BUTTERFLIES AND ZEBRAS

FRIDAY 12 MARCH, 7.00pm

Professor Gillian Gehring, Department of Physics and Astronomy, The University of Sheffield

Pennine Lecture Theatre, Sheffield Hallam University, City Campus

(Suitable for age 14s and above)

Nature has many patterns: patterns that we take for granted but may not have thought possible to understand; the shape of a leaf, the colours of a butterfly, the stripes of a zebra. This lecture is a journey of understanding, how single atoms come together to form crystals and how the chemical processes that give rise to stripes can be understood by the science of 'self-organisation'.

This lecture is free. To book a place contact Linda Bray at Sheffield Hallam University:

*T: 0114 225 4870,
E: science-week@shu.ac.uk*

Festival of Social Sciences

12-21 March

A week-long celebration of the science of everyday life, incorporating interactive events and activities for a range of audiences.

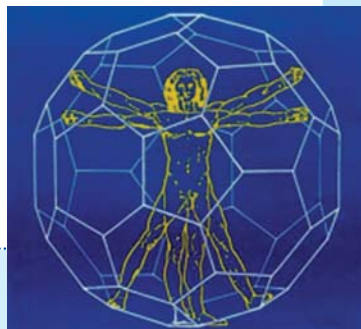
The Festival will showcase the University's world-class social science research and knowledge exchange with an exciting schedule of events which will aim to shed light on, and celebrate how, this research influences our social, economic and political lives - both now and in the future.

Topics covered in this year's event will include how football benefits society, green and living roofs in Sheffield, youth and politics, and the fear of crime in Sheffield.

A full list of events will be included on the web page nearer the time, so please keep checking the link:

www.shef.ac.uk/festivalofsocialsciences





ARTS-SCIENCE ENCOUNTERS 2010

A series of inter-disciplinary talks on broad ranging topics, bringing together researchers from across the University's five faculties and recognised external speakers.

The talks are free and open to the general public and are pitched at non-specialists.

For more information and to register a place for any of these events, see the website (live on 8 February): www.shef.ac.uk/english/arts-science

E: h.j.wilson@sheffield.ac.uk (Hilary Wilson)

SING TO ME, MUSE: WHERE DOES INSPIRATION COME FROM?

MONDAY 15 MARCH, 7.00-9.00pm

Showroom Cinema, Paternoster Road, Sheffield, S1 2BX

Where do new ideas for research or other activities come from? How do you describe or account for that 'voice' (is it a voice?) which tells you where to go next? This event brings together experts from psychology, literature, theatre performance, environmental studies and public health to investigate whether there are any common factors in the ways we find inspiration.

SHE'S LOST CONTROL: SCIENCE ON THE STAGE

TUESDAY 16 MARCH, 5.30-7.00pm

Sheffield University Drama Studio, Shearwood Road, S10 2TD

This Encounter will begin with a general discussion of theatre on the current stage, followed by a groundbreaking live art production in which award-winning dancer Rita Marcalo explores the conceptual and physical interfaces between dance, epilepsy and neurological research.

DANCING TO DARWIN: THE COMEDY OF CHANGE

TUESDAY 13 APRIL, 5.30-7.00pm

Humanities Research Institute, 34 Gell Street, S3 7QY

In advance of a Ballet Rambert performance at the Lyceum Theatre, 28-30 April, this Encounter features the scientist whose collaboration with Mark Baldwin produced the new ballet, *The Comedy of Change*, on the subject of evolution and animal behaviour. Cambridge psychologist Nicky Clayton talks about the creation of the ballet, and how scientific ideas come to inspire the movement, energy and musicality of dance.

CAROL ANN DUFFY AND PETER EDWARDS: THE SCIENCE OF PORTRAITURE

TUESDAY 20 or WEDNESDAY 21 APRIL
Venue and date to be confirmed

Humanities Research Institute, 34 Gell Street, S3 7QY

Poet Laureate Carol Ann Duffy and National Portrait Gallery artist Peter Edwards demonstrate and discuss how scientia (knowledge) and techne (technique) inform the arts of poetry and painting.

MAGNETIC RESONANCE IMAGING IN POETRY AND BRAIN RESEARCH

TUESDAY 27 APRIL, 5.30-7.00pm
Humanities Research Institute, 34 Gell Street, S3 7QY

In this Encounter, leading brain scientist Professor Sean Spence engages in discussion with poet Jon Glover, to discuss the uses of MRI in the study of deception. Jon Glover will also read poems from his recent volume, entitled Magnetic Resonance Imaging.

THE PSYCHOLOGY OF MUSIC

TUESDAY 4 MAY, 5.30-7.00pm
Humanities Research Institute, 34 Gell Street, S3 7QY

In conversation with Paul Robertson, Leader and violinist of the internationally acclaimed Medici String Quartet, psychologists Professor Lawrence Parsons and Dr Pam Heaton discuss their research into the brain science behind musical performance.

FISH AND LINE: ON KANDINSKY, AQUATIC LIFE, AND NEW SENSES OF THE HUMAN

TUESDAY 11 MAY, 5.30-7.00pm
Humanities Research Institute, 34 Gell Street, S3 7QY

Social anthropologist Professor Tim Ingold, recently featured on BBC Radio 4's Leading Edge, comes to Sheffield with an exciting, cross-disciplinary talk on fish, ways of being human, and Kandinsky's theory of art, and which, he says, 'gets to the heart of everything I want to say about life, art and animals.'

MEMORY IN CULTURAL HISTORY AND PSYCHIATRY

TUESDAY 18 MAY, 5.30-7.00pm
Jessop West Exhibition Space, 1 Upper Hanover St, 5:30-7pm

Cognitive psychologist Professor Martin Conway will discuss with Emeritus Biblical Studies Professor Philip Davies, how memory connects with emotion, a sense of identity and motivation in the brain, and how the personal relates to forms of collective or cultural memory. There will also be an exhibition of photography entitled 'Switch Off Before You Leave' by Sheffield artist Lizz Tuckermann, about the Jessop Buildings.

SCIENCE AND MADNESS: FROM TACIT KNOWLEDGE TO THE UNCANNY

TUESDAY 25 MAY, 5.30-7.00pm
Humanities Research Institute, 34 Gell Street, S3 7QY

Professor Phil Thomas, psychologist, philosopher and psychiatrist, comes together with English lecturer and creator of 'Storying Sheffield' Dr Brendan Stone to discuss concepts narrative and their relation to identity and mental health.

'EVERY TOOL SHAPES YOUR MIND' : THE IMPLICATIONS OF TECHNOLOGY

TUESDAY 1 JUNE, 5.30-7.00pm
Interdisciplinary Centre of the Social Sciences 219 Portobello, Sheffield, S1 4DP

The story of human history can be narrated through the evolution of our tools. What were the most important tools of our past, and what will be the tools that shape our humanity in the 21st century?

To discuss these questions, we bring together distinguished archaeologist Professor John Barrett, Computer Studies Professor of Language and Knowledge, Professor Fabio Ciravegna and architect Professor Jeremy Till, formerly a Dean at Sheffield and now Dean of Architecture and Built Environment at the University of Westminster.

WHAT MAKES FOR A BETTER SOCIETY?

TUESDAY 15 JUNE, 5.30-7.00pm
Humanities Research Institute, 34 Gell Street, S3 7QY

Emeritus Professor Zygmunt Bauman, a scholar internationally renowned for his writing on modernity, the Holocaust, and postmodern consumerism, comes to Sheffield to join a panel discussion with leaders of the Sheffield research community, to envisage a better society for our future. Joining him, will be Professor Richard Jones, a leading expert in Nanotechnology and Pro-VC for Research and Innovation at Sheffield, Professor Andrew Vincent (Politics), and Dr Benjamin Ziemann (History).

MARCUS DU SAUTOY: THE ART OF MATHEMATICS

MONDAY 21 JUNE, 5.30-6.30pm
St George's Church Lecture Theatre

The 2010 Encounters concludes with a public lecture by Marcus du Sautoy, Oxford University Simonyi Professor for the Public Understanding of Science. He will explain why and how mathematics may be considered a form of art. Find out why, by coming along to talk, where his recently published books, *The Music of the Primes* and *Finding Moonshine*, will also be available for sale. Mathematics, he is quoted as saying, is 'all about mystery, big stories and journeys to infinity and beyond.' (The Guardian, 23 June 2009)

Music

DEPARTMENT OF MUSIC CONCERTS

Tickets (where required) available from:
The University of Sheffield Cash Office Floor 6,
University House, Western Bank, S10 2TN,
**The University of Sheffield Student Union Box
Office** T: 0114 222 8777, **On the door** half an hour
before the start of each concert, **Online** with a credit
or debit card at: www.sheffield.ac.uk/concerts

For further information on all concerts at
the University of Sheffield please contact
T: 0114 222 0499, E: concerts@sheffield.ac.uk
www.sheffield.ac.uk/concerts



EVENING CONCERTS

All concerts are in Firth Hall, Firth Court, Western Bank, S10 2TN.
Free parking is available in Durham Road car park as well as a free
programme on arrival and complimentary wine and refreshments
during the interval.



ALFRED BRENDL: LIGHT & SHADE OF INTERPRETATION

TUESDAY 16 FEBRUARY, 7.30pm

*Presented by the University of
Sheffield Department of Music
and Music in the Round*

In a fascinating concert-length
talk Brendel discusses the art
of performance, examining
sound, articulation, notation,
rhythm and character. He will
look at performance habits and
their relevance to the works, as
well as to our present day ears
and needs. Bursting with
musical examples, offering a
rare opportunity to see one of
the greatest pianists of all time
back in action.

*Tickets: £14, £9.50 disabled &
unwaged, £3 students*

Sheffield Theatres Box Office
(The Crucible, Tudor Square)
T: 0114 249 6000

www.sheffieldtheatres.co.uk

PLEASE NOTE that these booking
details apply to this event only.
For all other concerts please
refer to the information above.

NORDIC SPRING FESTIVAL

WEDNESDAY 24 FEBRUARY –
TUESDAY 2 MARCH

Featuring award winning and
distinguished artists from both
sides of the North Sea, the
festival promotes the
understanding of Nordic
culture with performances of
Scandinavian music, as well as
furthering our work to
establish a Nordic Studies
Centre in Sheffield.



Alfred Brendel: Light & Shade of Interpretation

POPULAR SCANDINAVIAN SONG

WEDNESDAY 24 FEBRUARY,
7.30pm

Signe Asmussen (*soprano*)
Benjamin Frith (*piano*)

*Tickets: £8, £5 concessions,
£2.50 students/unwaged*



Danish soprano Signe Asmussen

NORWEGIAN HARDANGER FIDDLERS

TUESDAY 2 MARCH, 7.30pm

To close the festival we welcome performers from the Ole Bull Academy at Voss, near Stavanger Norway, which was established to teach "slåttespel", the traditional Norwegian "Hardanger" fiddle music and folk dance.

Tickets: £8, £5 (concessions), £2.50 (students/unwaged)



Nijinsky and The Ballets Russes

NIJINSKY AND THE BALLETS RUSSES

TUESDAY 9 MARCH, 7.30pm

At this concert will also be an exhibition of photographs from the Ballets Russes.

Benjamin Frith piano
Peter Hill piano

Stravinsky: The Rite of Spring

Stravinsky: Petrushka

Debussy: Prelude L'Après-midi d'un Faune

Tickets: £8, £5 concessions, £2.50 students/unwaged

SCHUMANN: DICHTERLIEBE

TUESDAY 16 MARCH, 7.30pm

"Technically impressive music making of real style"
Music Magazine

Kevin Kyle (tenor)
Carl Herring (guitar)

This is a unique opportunity to hear one of Schumann's best known works, meticulously and beautifully arranged for guitar and voice.

Tickets: £8, £5 concessions, £2.50 students/unwaged

SHEFFIELD UNIVERSITY CHAMBER ORCHESTRA

SATURDAY 20 MARCH, 7.30pm

Handel: Water Music
(Suite No.2)

Vaughan Williams:
Oboe Concerto

Haydn: Symphony No 104 in D
Eleanor Hodgson oboe
Tony Bennett conductor

Tickets: £5, £3 concessions, £2 students/unwaged

SHEFFIELD UNIVERSITY NEW MUSIC ENSEMBLE

TUESDAY 13 APRIL, 7.30pm

A concert in memory of the Belgian composer Henri Pousseur (1929-2009). The programme will also feature new work by composers from the University of Sheffield.

Tickets: £5, £3 concessions, £2 students/unwaged

NOCTURNE: THE ROMANTIC LIFE OF FRÉDÉRIC CHOPIN

TUESDAY 20 APRIL, 7.30pm

"A highly gifted and sensitive musician, playing of real artistry and stylistic conviction." *The Daily Telegraph*
Lucy Parham piano
Actors TBC

Scripted from his letters and diaries, this concert and narrative chronicles the romantic life of one the greatest and most treasured composers for solo piano – Frédéric Chopin. The story follows his turbulent relationship with the renowned literary figure George Sand, their time together in Majorca, his fragile health and his ultimate demise in poverty in Paris. This is interspersed with some of his most loved and poignant compositions. Nocturne will receive its premiere at the University of Sheffield

Tickets: £8, £5 (concessions), £2.50 (students/unwaged)



Pianist Lucy Parham

SHEFFIELD UNIVERSITY CHAMBER CHOIR

TUESDAY 27 APRIL, 7.30pm

Bach: Cantata BWV 4,
Christ Lag in Todesbanden

Ligeti: Lux Aeterna

Stravinsky: 4 Russian Peasant
Songs Tom Owen (*conductor*)

*Tickets: £8, £5 concessions,
£2.50 students/unwaged*

SCENES FROM BEIJING AND KUNQU OPERA

TUESDAY 4 MAY, 7.30pm

'The Parting at the Kiln'
(*'Pinggui Bieyao'*)

The London Jing Kun Opera Association is the only organisation in the UK that promotes Beijing and Kunqu Opera. This is a rare opportunity to witness the sheer spectacle of this vibrant and colourful yet endangered art form.

*Tickets: £8, £5 concessions,
£2.50 students/unwaged*



SHEFFIELD UNIVERSITY WIND ORCHESTRA

SUNDAY 9 MAY, 7.30pm

Nostalgia and Reality

Classic twentieth century Symphonic Band music of Milhaud and Ellery provide a French strand to the programme, contrasting with a Jazz thread. Bringing us right into the 21st century and up to the present day, a new concerto for Euphonium will be performed that sings of the issues of our (the UK's) involvement in the current conflicts in the Middle East.

*Tickets: £5, £3 (concessions),
£2 (students/unwaged)*

THE CAFÉ BAND IN VIENNA

TUESDAY 11 MAY, 7.30pm

"One of the finest new ensembles to come from the North of England in many years" *Yorkshire Post*

The Café Band players are mainly based with the Orchestra of Opera North and is a unique group inspired by the tradition of live music in Viennese coffee houses at the turn of the nineteenth century. The unusual septet of accordion, strings, clarinet and piano is an exciting new venture bringing a rich variety of sound and texture to popular waltzes, operetta and light classical music; at times a delicate blend, at others more of a double espresso, but always harmonious and engaging.

*Tickets: £8, £5 concessions,
£2.50 students/unwaged*



SHEFFIELD UNIVERSITY SYMPHONY ORCHESTRA

SUNDAY 16 MAY, 7.30pm

George Nicholson:
The Convergence of the Twain

Bartok: Piano Concerto No 2
in G major

Tchaikovsky: Symphony No 6
in B minor (*Pathétique*), Op. 74

Leo Nicholson *piano*
George Nicholson *conductor*

*Tickets: £8, £5 concessions,
£2.50 students/unwaged*



RUSH HOUR CONCERTS

All concerts are at 5.30pm

*Firth Hall, Firth Court,
Western Bank*

Beat the traffic, avoid the public transport rush and unwind before going home after a hard day's work. These new informal concerts provide great affordable music for all people, including those with busy lifestyles who cannot make our evening and lunchtime concerts. All tickets are just £1.50, and only available to purchase on the door, and not in advance from the box offices.

Monday 15 February

Bach: Jesu, Meine Freude & other motets

Monday 12 April

Sheffield University Big Band (SUBB)

Monday 3 May

Jessop Sinfonia

MUSIC IN THE WINTER GARDEN

All concerts start at 12.30pm. Additional seating will be put out for those who wish to sit and listen to the whole concert.

Another new addition this season is the introduction of Winter Garden Concerts, providing magnificent music when viewing the garden, eating your lunch, or simply just passing by.

Wednesday 17 February

Cassini Quartet

Wednesday 3 March

SubSUBB

Wednesday 10 March

Chamber Ensemble

Wednesday 17 March

Wind Octets

Wednesday 12 May

Wind Octets

FREE LUNCHTIME CONCERTS

All on Thursdays at 1.10pm (doors open at 12.45pm) in the University Drama Studio.

Admission is free and tickets are not required.

These concerts are designed to be an alternative, informal way to spend part of a lunch hour and members of the audience may arrive and leave between musical items.

18 February

Katie Hockenhall *soprano*,
Peter Hill *piano*

25 February

Heather Roche and
Sarah Watts *bass clarinets*

4 March

Renaissance and Medieval
Instrumental Music

11 March

Kim Roberts (*saxophone*),
Gina Walters (*soprano*)

18 March

Sheffield University
Composers' Concert

15 April

George Parsons (*harpsichord*)

22 April

Jenny Hicken (*viola*) and
Lucy Revis (*cello*)

29 April

Sheffield University
Jazz Orchestra

6 May

Asian Music Concert

13 May

Sheffield University
Ensembles Concert

HALLAM SINFONIA CONCERTS

SATURDAY 6 MARCH, 7.30pm

*Firth Hall, Firth Court,
Western Bank*

Natalia Luis-Bassa *Conductor*

Beethoven Overture Fidelio

Svendsen Zorahayda
Legend

Bruch Violin Concerto No 1
Molly Cockburn *Soloist*

Grieg Symphony in C Minor

SATURDAY 8 MAY, 7.30pm

*Firth Hall, Firth Court,
Western Bank*

Natalia Luis-Bassa *Conductor*

Schumann Manfred
Overture

Chopin Piano Concerto No 1
Benjamin Frith *Soloist*

Dvorak Symphony No 6
www.hallamsinfonia.org.uk

*Tickets: adults £9.00, £7.50
concessions (Senior Citizens,
UB40s), £5 students,*

*£2.50 children under 18 years,
from Calow Classics,
721 Abbeydale Road,
Sheffield S7 2BE*

*T: 0114 255 3440, or by post,
enclosing S.A.E. and cheque
payable to "Hallam Sinfonia",
to Paul Adam, 19 Bents Drive,
Sheffield S11 9RN*



EVENTS AT THE COMMON ROOM

The Common Room, Level 5,
University House,
Western Bank

Standard tickets (shows only)
available from the Union Box
Office, Union of Students

T: 0114 222 8777,

E: boxoffice@sheffield.ac.uk

To book premiere tickets,
to include a pre-show meal,
contact Lindsey Bates,
T: 0114 222 8968

TIPITINA Plus MC and DJ Chris Powers

SATURDAY 13 FEBRUARY,
8.00pm

Tipitina take their inspiration
from classic Rhythm and Blues,
Swing and Boogie Woogie.
Their first album *I Wish I Was*
in New Orleans received rave
reviews and they are tipped to
be the next big act to emerge
from the Jazz, Blues and Soul
firmament. Catch them in an
intimate venue whilst you can!

Standard Tickets (show only):
£10 in advance (£12.50 on the
door), Premier "Winter Special"
- just £15 including pre-show
meal



Mike Sanchez and The Portions



RICKY COOL AND THE HOOLA BOOLA BOYS Plus MC and DJ Chris Powers

SATURDAY 6 MARCH, 8.00pm

*Just let the Hoola Boola
re-ignite your smile*

Yes that's exactly what Ricky
Cool and The Hoola Boola Boys
are all about. Ricky has long
been known as one of the best
frontmen in the business, from
his days as a displaced
American who teamed up with
Andy Silvester to launch The
Big Town Playboys. In April they
recorded their debut album
"Live At The 100 Club" and in
October supported Jerry Lee
Lewis!

Standard Tickets (show only)
£10 in advance (£12 on the
door), Premier Tickets
including pre-show meal (£20)

REAL MUSIC AND REAL ALE FESTIVAL - plus MC and DJ Chris Powers

SATURDAY 24 APRIL,
3.00pm-late

A full day of live music in
conjunction with Thornbridge
Brewery. The festival will
showcase six bands. The line-
up so far includes **Kyla Brox,**
The Music Players Society
Big Band, The Alex McKown
Band, The Samuel C Lees
Quartet, with more acts to be
announced soon. In addition to
the live music the festival will
showcase the best real ales
and regional food around.

Festival Tickets (show only)
£10 (£12 on the door), Premier
Tickets (includes beer tasting
and a hot buffet of regional
food) £20

MIKE SANCHEZ AND THE PORTIONS Plus MC and DJ Chris Powers

SATURDAY 8 MAY, 8.00pm

British singer, pianist and guitarist Mike Sanchez is one of the
most exciting and charismatic performers of Rhythm & Blues and
Rock 'n' Roll in the world today. His indelible image as a frenetic
front man, pumping powerful boogie-woogie from the piano in
a soaking suit, has won him fans from all over the world and
attracted a following from many famous rock and blues legends
who have lined up to work with him. His band now features Big
Boy Bloater on guitar!

Standard Tickets (show only) £15 in advance (£17 on the door),
Premier Tickets (including a pre-show meal) £30

UNION OF STUDENTS LIVE MUSIC

INME

WEDNESDAY 10 FEBRUARY,
7.00pm

The Foundry

Their passionate and innovative attitude towards creating music has led to the creation of their proudest opus, 'Herald Moth'.

Tickets: £8.50 advance



FIELD MUSIC

SUNDAY 28 FEBRUARY, 7.30pm

Fusion (over 14s only)

An experimental pop band from Sunderland, UK.

Price: £8.50 advance



SPIERS AND BODEN

SATURDAY 13 MARCH, 7.30pm

Fusion (over 14s only)

Spiers & Boden have established themselves as one of the finest instrumental duos on the traditional scene, and are winners of the BBC Radio 2 folk award. So whether you're into your folk music or aren't sure, come down to the gig and you'll be loving them by the end!

Tickets: £12 advance
(£8 advance NUS)

DAN LE SAC VS SCROOBIUS PIP

SUNDAY 14 MARCH, 7.30pm

Foundry

Dan Le Sac Vs Scroobius Pip have extended their forthcoming UK tour, and is now coming to your union!

Tickets: £12.50 advance

65DAYSOFSTATIC

THURSDAY 6 MAY, 7.30pm

The Octagon (over 14s only)

Touring May 2010, the highlight of their tour is sure to be their massive hometown gig in Sheffield!

Tickets: £12 advance



For further information and to book tickets contact the Union of Students Box Office,
T: 0114 222 8777, E: boxoffice@sheffield.ac.uk
www.sheffield.ac.uk/union/entertainment

Drama

UNIVERSITY DRAMA STUDIO

Shearwood Road (off Glossop Road)

All productions are open to the public. Details are correct at time of publication, but please see the Drama Studio website for up-to-date information and news. www.sheffield.ac.uk/drama

T: 0114 222 0200, E: dramastudio@sheffield.ac.uk



Apex Players **TWO** by Jim Cartwright

THURSDAY 4 - SATURDAY
6 FEBRUARY, 7.45pm

Funny, moving and tender by turns, this play is set in a Northern pub frequented by a variety of characters – some happy, some less so; some with a humorous story to tell, others bordering on tragedy – with a number of unexpected twists and surprises.

Tickets: £6.50, concessions £6, from Christopher Boydell, 28 Valley Road, Sheffield, S6 9FY
T: 0114 249 6126

www.apexplayers.pwp.blueyonder.co.uk

Sheffield University Theatre Company **STOCKHOLM** by Byrony Lavery

WEDNESDAY 10 - SATURDAY 13
FEBRUARY, 7.30pm

The perfect house...the perfect team...the perfect couple. Todd and Kali embody everything every couple aspire to be, behind their seamless romance lies a relationship falling apart.

Tickets: Wed £4, Thurs-Sat £6, concessions £5, from The Union Box Office, Students' Union, Western Bank
T: 0114 222 8676,

E: theatre.company@sheffield.ac.uk
www.sutco.co.uk

French Society Players **LE BARBIER DE SÉVILLE** by Pierre Augustin Caron de Beaumarchais (performed in French)

WEDNESDAY 17 - FRIDAY 19
FEBRUARY, 7.30pm

An old man in love with his young ward intends to marry her the next day. But he is prevented from doing so by her younger, more skilful lover who makes her his wife that very day under the nose of her guardian (Beaumarchais) – and all with razor wit!

Tickets: £5, concessions £3.50 from the Department of French, Floor 3, Jessop West, 1 Hanover St, Sheffield, S3 7RA

T: 0114 222 2860 or 0114 222 2877
E: d.mccallam@sheffield.ac.uk
OR.j.dobson@sheffield.ac.uk

www.shef.ac.uk/french/news/events/play0910

Sheffield University Theatre Company **BEDROOM FARCE** by Alan Ayckbourn

WEDNESDAY 24 - SATURDAY 27
FEBRUARY, 7.30pm

Four couples, three bedrooms, two celebrations, one blazing row and an illicit kiss (or two). Alan Ayckbourn's Bedroom Farce shines a brilliant spotlight onto the trials and tribulations of suburban marriage.

Tickets: Wed £4; Thurs-Sat £6, concessions £5, from The Union Box Office, Students' Union, Western Bank, S10 2TG

T: 0114 222 8676,
E: theatre.company@shef.ac.uk
www.sutco.co.uk

University of Sheffield Drama Society **REGENERATION** (adapted from the novels of Pat Barker) by Ian Gledhill

WEDNESDAY 3 - SATURDAY 6
MARCH, 7.30pm

1917. Poets Siegfried Sassoon and Wilfred Owen meet at Craiglockhart war hospital. Psychiatrist William Rivers is faced with a dilemma: under a duty to make his patients well enough to return to France, he knows they will face further trauma and possible death. Stage premiere of the award-winning Regeneration trilogy.

Tickets: £8, concessions £6 from Lynda Liddament, 31 Hastings Road, Sheffield, S7 2GT

T: 0114 262 0574

www.suds.sheffield.ac.uk

Sheffield University Theatre Company **IMMACULATE** by Oliver Lansley

WEDNESDAY 10 - SATURDAY 13
MARCH, 7.30pm

Mia hasn't had sex for eleven months, but she's pregnant. Gabriel says it's the second coming. Lucifer says it's his, and her ex-boyfriend doesn't care as long as he doesn't have to fund it. A quick-witted and clever comedy that'll have you rolling in the aisles this spring.

Tickets: Wed £4, Thurs-Sat £6, concessions £5, from The Union Box Office, Students' Union, Western Bank

T: 0114 222 8676,
E: theatre.company@sheffield.ac.uk
www.sutco.co.uk

Stagecoach Theatre Arts MUSICAL MAGIC

TUESDAY 23 & WEDNESDAY 24
MARCH, 7.00pm

The show is being presented in support of the Sheffield Royal Society for the Blind.

Students of Stagecoach Theatre Arts School, Sheffield present an evening of music, dance and drama. Music from West End and Broadway shows are presented by the students aged from 6 to 18 years.

Tickets: £10, concessions £9, from Sheila Chapman, 4 Holyrood View, Sheffield, S10 4NG

T: 0114 230 9960

Velma Furniss School of Theatre Dance HUMPTY DUMPTY by Alan P Frayn

TUESDAY 30 MARCH -
THURSDAY 1 APRIL, 7.15pm

Come and join Humpty Dumpty on his adventures in our colourful production and meet all the pupils as they share his wishes along with many well known characters. We journey to the circus, nursery rhyme land and into outer space before we land back home and of course good always triumphs over wrong and everyone lives "happily ever after".

Tickets: Adults £7, concessions £6, from Velma Furniss, 2 Oakes Lane, Sheffield, S5 0TA

T: 0114 240 0011



Sheffield University Theatre Company VINEGAR TOM by Caryl Churchill

WEDNESDAY 14 - SATURDAY
17 APRIL, 7.30pm

An examination of gender and power relationships through the lens of 17th century witchcraft trials as the women of the play are humiliated and oppressed in a pitiless society. This adaptation places you in a world of fear and the absurd. A play about witches but with no witches in it!

Tickets: Wed £4, Thurs-Sat £6, concessions £5, from the Union Box Office, Students' Union, Western Bank

T: 0114 222 8676,

E: theatre.company@shef.ac.uk

www.sutco.co.uk

DEPARTMENT OF GERMANIC STUDIES

The Department of Germanic Studies Theatre Group - Die Fäustchen GRETCHEN 89FF by Lutz Hübner

WEDNESDAY 3 - FRIDAY 5
MARCH, 7.00pm

*Firth Hall, Firth Court,
Western Bank, S10 2TN*

A play delving into the mad world of theatre production. Taking a scene from Goethe's 'Faust' you will be introduced to ten different pairs of directors and their actors, each with their own idea of how the scene should be performed. The play will be entirely in German, with musical interludes from the departmental band.

Tickets: £3, from Binia Ehrenhart, Germanic Studies

T: 0114 222 4908,

E: b.ehrenhart@sheffield.ac.uk

Sheffield University Theatre Company STILL WAITING by Dominic Gee-Burch

WEDNESDAY 28 APRIL -
SATURDAY 1 MAY

Harold is a long way from home, his family and his sweetheart. Confronted with situations no-one should ever endeavour, his journey through Europe to a desolate prisoner-of-war camp finds him reunited with friends and enemies in unimaginable situations. Before tension reaches breaking point the group of inmates are torn apart and we're reminded physically and mentally about life 'back home'. Still Waiting is a rich and vibrant drama that delivers on every level. As a platform for human emotion it forces the audience to question why they feel the way they do about themes of history, prejudice and stereotypes in what can only be described as a spectacle of theatre. With the intention to leave the audience emotionally and physically drained, the script allows all its actors and actresses to push what they're capable of within the flexible boundaries of each of the elaborate characters.

*Tickets: Wed £5, £4 students,
Thurs - Sat £6, £5 students.*

E: theatre.company@sheffield.ac.uk

www.sutco.co.uk



Lectures & Seminars

CAMBRIAN SOCIETY LECTURE SERIES

A series of four prestigious lectures to mark the Centenary of the Sheffield and District Cambrian Society. **The general theme of the series is:**

The Future of the United Kingdom – a personal perspective

All lectures will take place in Firth Hall, Firth Court, Western Bank

For further information contact Gail Street in the Events Team, g.street@sheffield.ac.uk,

Tel: 0114 222 8893 www.sheffield.ac.uk/whatson/universitylectures/cambriansociety/html

Lecture 1 -

The Rt Hon Rhodri Morgan AM,

Lately, First Minister of the Assembly for Wales

WEDNESDAY 10 MARCH, 7.00pm



Educated at Whitchurch Grammar School, St John's College, Oxford and Harvard University. Prior to becoming First Minister of the Assembly for Wales in April 2000, he was Head of the European Community's Office in Wales (1980 – 1987),

served as Labour MP for Cardiff West (1987 – 2001) and Shadow Environment Spokesman (1988 – 1994). He was Opposition Front Bench Spokesman on Energy (1988 – 1990) and on Welsh Affairs (1992 – 1997), and Chairman of the House of Commons Select Committee on Public Administration (1997-1999). He was appointed to the Privy Council in July, 2000 and stepped down from the UK House of Commons at the 2001 General Election. He retired as First Minister of the Assembly in December, 2009.

Tickets will be allocated on a first come, first served basis and will be available to apply for from Wednesday, 17 February

Lecture 2 -

The Rt Hon George Reid,

Lord High Commissioner of Scotland

WEDNESDAY 5 MAY, 6.30pm



Following a highly successful career as a journalist and broadcaster, George Reid was elected to the UK Parliament as MP (SNP) for Clackmannan in 1974 and subsequently also served as a Member of the Parliamentary Assemblies of the Council of Europe

and the Western European Union. He was then Director of Public Affairs for the Red Cross and Red Crescent based in Geneva for 12 years. He re-entered politics in 1999 in the new Scottish Parliament as MSP (SNP) for Mid Scotland and Fife. In 2003, he won the Ochil constituency for the SNP and that same year was elected by his fellow MSPs to succeed David Steel as Presiding Officer of the Parliament. He was made a Privy Councillor in 2004 and appointed Lord High Commissioner of Scotland by the Queen in 2008. He is the recipient of numerous national and international awards and honours for his political and humanitarian work and was twice named Scottish Politician of the Year.

Tickets will be allocated on a first come, first served basis and will be available to apply for from Wednesday, 14 April 2010



Lecture 3 -

Baron Bew of Donegore,
Professor of Irish Politics at Queen's University,
Belfast

WEDNESDAY 12 MAY, 6.30pm

Entrance to these lectures is free of charge but by ticket only. Places will be limited. There will be an optional drinks reception immediately after the lecture at a charge of £3 per head. Tickets for the reception will be issued separately.



Professor Paul Bew, a noted scholar and author specialising in Irish political history, has been at Queen's University, Belfast since 1979 and was appointed to the Chair of Irish Politics in 1991. He is author or co-author of some 14 books, the most

recent being *'The Making and Remaking of the Good Friday Agreement'* and *'Ireland: The Politics of Enmity 1789 – 2006'*, both published in 2007. He acted as historical advisor to The Bloody Sunday Inquiry between 1998 and 2001 and later served as an adviser to David Trimble, the former First Minister of Northern Ireland. His contributions to the Good Friday Agreement process were acknowledged with his appointment to the House of Lords in 2007, where he sits as a crossbencher.

Tickets will be allocated on a first come, first served basis and will be available to apply for from Wednesday, 21 April.

Tickets can be ordered via the link below and will be mailed out 7-10 days prior to the lectures:

www.sheffield.ac.uk/whatson/universitylectures/cambriansociety.html



ADVANCE NOTICE

The final lecture in the series is planned for 27 October at 6.30pm when the Rt Hon David Blunkett will be speaking. Full details will appear in the June-September edition of Open Campus

DEPARTMENT OF GEOGRAPHY

WHY SOCIAL INEQUALITY PERSISTS

Professor Danny Dorling,
Department of Geography

WEDNESDAY 3 FEBRUARY,
8.00pm

University Arms, Brook Hill

This talk to the Sheffield Humanist Society presents the argument that in rich countries injustice as represented by social inequalities is caused less and less by having too few resources to share around fairly, but is increasingly maintained by widespread adherence to beliefs that which actually propagate it.

No booking required.

E: publicity@sheffieldhumanists.org.uk
www.sheffieldhumanists.org.uk

INSTITUTE FOR LIFELONG LEARNING

OPEN SEMINAR TO FACILITATE INTERDISCIPLINARY RESEARCH INTO CARIBBEAN STUDIES

FRIDAY 28 MAY, 1.30-5.30pm

*Room B59,
Portobello Building,
Mappin Street*

British Pro-slavery Culture and Politics in the Era of Abolition

Dr Christer Petley,
University of Southampton

Beantalk to Macc Tree – the essence of Jamaican Pantomime

Dr Ruth Minott Egglestone,
Sir Henry Lloyd Grammar
School, Aylesbury

The Nature of Independence – the West Indies Federation and Decolonisation in the Caribbean 1945-1962

Anthony Bond,
University of Warwick

The event is open to all and free. Please contact Dr Sandra Courtman to book a place.

T: 0114 222 7116,
E: s.courtman@sheffield.ac.uk

SPECIAL GUEST LECTURE

ALIGNMENT, LEADERSHIP AND MANAGEMENT USING DLA PIPER AS A CASE STUDY

WEDNESDAY 14 APRIL, 6.00pm

Sir Nigel Knowles,
Joint CEO and Managing
Partner of DLA Piper UK LLP

*Firth Hall, Firth Court,
Western Bank*

Further detail and an abstract will be available on the What's On section of the University web page nearer the time.

www.shef.ac.uk/whatson/universitylectures

In the meantime enquiries can be made to Gail Street,
Events Team, T: 0114 222 8893,
g.street@sheffield.ac.uk



Open Days & Exhibitions

POSTGRADUATE OPEN DAY

WEDNESDAY 10 FEBRUARY, 10.00am-3.00pm

Firth Hall, Firth Court, Western Bank

The day provides an excellent opportunity for you to find out more about the course you are interested in and relevant funding opportunities, how to apply, and to take a look at our excellent facilities for postgraduate students.

Book your place at:

www.shef.ac.uk/postgrad-opendays

SPRING INTO JOBS FAIR

WEDNESDAY 24 FEBRUARY, 10.30am-4.00pm

Jointly hosted by the careers services at The University of Sheffield and Sheffield Hallam University

Octagon Centre

Starting to think about life after university? Find out about a range of full-time positions starting from Summer 2010, plus internship and placement opportunities. A NOT TO BE MISSED event for all final year undergraduate and postgraduate students, and those seeking internship/placement positions.

Find out more about the day, view the list of participating employers and get some useful tips on making a good first impression. Also Summer Experience Fair, Tuesday 9 March, 11.00am-3.00pm, Sheffield Hallam University. Read more at:

www.sheffieldcareersfairs.ac.uk

EXECUTIVE MBA OPEN EVENINGS

WEDNESDAY 24 MARCH & WEDNESDAY 12 MAY, 6.30-8.00pm

ICOSS Building, 219 Portobello, Sheffield S1 4DP

Come and find out more about studying for a part-time MBA. Our Open Evenings are an opportunity to hear about the content of the programme and to talk to some of our current and former students and staff. We also have information about scholarships and funding available.

Entry is free of charge, but please book your place at:

<http://emba.group.shef.ac.uk/contact/open-evenings/book>

T: 0114 222 3378 (Debra Maxwell)



Executive MBA Open Evenings

MISCELLANEOUS

THURSDAY NIGHT COMEDY

Every Thursday evening,
7.00-10.00pm

Raynor Lounge/The Foundry

Sheffield Union's brand new comedy night is every Thursday in the Raynor Lounge, with the occasional bigger event in the Foundry! Get your weekly fix of mirth and merriment, with the best stand up on the circuit and see future stars up close and personal, before they hit the big time!

Tickets £5/£5.50, available from Union Box Office and online.

www.shef.ac.uk/union/entertainment

or via the Union of Students Box Office, T: 0114 222 8777
E: boxoffice@sheffield.ac.uk

PHYSICS & ASTRONOMY ART GROUP EXHIBITION

WEDNESDAY 19-FRIDAY 21 MAY,
10.00am-4.00pm

Room E32, Hicks Building



Fourth annual exhibition featuring work from staff and students across the University

Since the Art Group started up in the Department of Physics & Astronomy three years ago, it has uncovered an astonishing level of creativity and talent amongst academic, technical, research and clerical staff, and students, in the department. Our exhibitions have attracted interest from other artists in the University, and we now welcome colleagues from across all the Faculties. To see work from previous exhibitions, and find out more about what we do, go to our website.

There is no admission charge but we will be inviting voluntary donations for a charitable cause.

www.shef.ac.uk/physics/art-group/exhibition



Shrimps

SHEFFIELD STUDENT COMEDY FESTIVAL

WEDNESDAY 12 –
SUNDAY 14 MARCH



After the fantastic success of last year's inaugural event, the Sheffield Student Comedy Festival returns for a weekend of the very best student stand-up, improv, musical and sketch comedy. Over 20 acts are expected to perform including The Cambridge Footlights, Shrimps and the Chortle Student Comedian of the Year plus a whole series of workshops and open-mic events during the weekend. It all takes place in the Students' Union.

The Festival will be taking place across 4 venues, The Auditorium, Raynor Lounge, Coffee Revolution and Interval as the festival bar.

The times have yet to be confirmed but they will be roughly from around 4pm to midnight on the Friday, Saturday and Sunday. For more information visit the website:

www.studentcomedy.com

Tickets available from the Students' Union Box Office, (prices to be confirmed), T: 0114 222 8777

E: boxoffice@sheffield.ac.uk

www.sheffieldunion.com

CEILIDH!

FRIDAYS - 12 & 26 FEBRUARY,
12 MARCH, 7 & 21 MAY, 4 JUNE,
8.30pm-Midnight
*Loxleys Food Court,
University House*

Learn the dances, listen to the music and kick your feet up with like-minded people!

We also hope to be running similar events at the Edge in the Endcliffe student village on 26 March, 9 & 23 from 8.30pm – 1.00am

£2 for members arriving before 9.00pm, £3 for everyone else.

Membership costs £3 for the year and you receive your first Ceilidh for free. You can sign up for membership on the door. No prior booking is required and we welcome everyone regardless of experience!

We also run music workshops from 8.00-9.00pm and sessions from 9.00pm onwards every Wednesday in the University Arms for anyone interested in learning and playing the tunes. Come along, whether you're a seasoned folkie or a complete beginner - there's something for everyone!



Thursday Night Comedy



WORLD WEEK 2010

Get ready for 7 eventful days from the University of Sheffield's students union!

This fall... we're going to give you a crash course on culture like no other!! From parties, to foreign films to linguistics, art and culture, there is definitely something for everyone!

World Week will start off with a huge parade from the students union to the city centre on the 13th of March. The parade will include live performances from societies, entertainment and many surprises! As we unite together as one world, donations will be collected for the people of Haiti who could use some support amidst their sorrows.

Other events during the week include: Battle of the bands, St Patty's day, pottery painting, sign language classes... and lots and lots more!

The world is in the palm of your hands... carpe diem!

Look out for World Week posters and event booklets beginning of March.

Celebrate your diversity for a good cause and watch a whole new world unfold before your eyes...



as easy as...

3 MONTH FITNESS OFFERS

7am-11am**

£35*

Less than
£12 per month

7am-5pm**

£60*

Equivalent to
£20 per month

7am-10pm**

£80*

Less than
£27 per month

INCLUDES:
GYM
FITNESS CLASSES
SAUNA & STEAM
SWIMMING

Choose a time to suit you. Open to everyone

Goodwin Sports Centre, Northumberland Road, Sheffield, S10 2TY

Tel: 0114 222 6969 Email: membership.enquiries@s10health.co.uk www.usport.co.uk

*Joining fee may apply. **Last entry times apply. Members must be 18 years or over.

All information correct at time of going to print. S10health reserves the right to amend prices and withdraw products.



Guest accommodation at The University of Sheffield

- Conveniently located for the University, city centre and the Peak District
- Available for overnight stays or short term lets
- Perfect for visiting academics, students or overnight guests
- Prices start from just £25.00 per room per night incl VAT

For further details or to book:

Visit: www.shef.ac.uk/accommodation/guest

Email: accommodationoffice@sheffield.ac.uk

Procedure for booking University Facilities



The University Of Sheffield.

Drama Studio

Contact: Mr R T Grocock,
Theatre Manager, Shearwood
Road, T: 222 0200

Conference Office

For fully inclusive events packages and guidance throughout the booking process. Please contact the Conference Office, T: 0114 222 8822
E: conferences@sheffield.ac.uk

University meetings rooms

Contact: Corporate Services,
T: 0114 222 9060

Support the arts through the Alumni Foundation

The Alumni Foundation channels donations from alumni and friends of the University to the most deserving recipients across campus. It makes a large number of small grants to a range of projects that add life to the University, and encourages student involvement in areas such as drama, music, sport, art and culture.

The Alumni Foundation can only distribute as much money as it receives in donations. It is completely reliant upon the generosity of donors. We are very grateful for their support.

To support the work of the Alumni Foundation, please make a donation to the Alumni Fund. You can find out more by visiting www.sheffield.ac.uk/alumni or contact Ruth Stanley on 0114 222 1075, email r.e.stanley@sheffield.ac.uk

Sports facilities

Contact: USport, Goodwin
Sports Centre,
T: 0114 222 6999

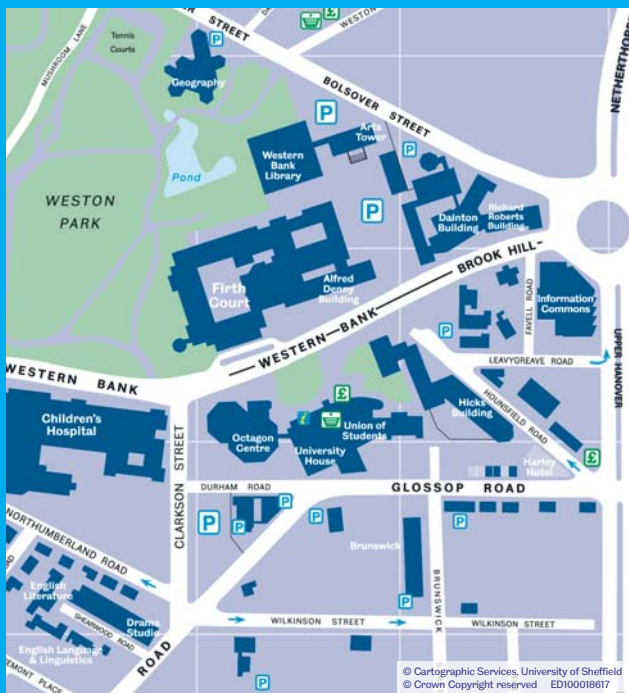
Library

Those people wishing to consult materials from the Library's collections should telephone 0114 222 7204

Open Campus gives details of events organised by The University of Sheffield that are open to members of the public. Details of how to obtain tickets, together with a contact name and number, are given when necessary.

Every effort has been made to ensure the accuracy of the information given in this leaflet, but the University can accept no responsibility for any errors or omissions.

The text of this leaflet can be supplied in larger print formats if needed. Please contact Jeanette Newcombe, tel: 0114 222 1030, email: j.newcombe@sheffield.ac.uk



© Cartographic Services, University of Sheffield
© Crown Copyright reserved ED100018617