



The
University
Of
Sheffield.

- Summer Music & Arts Festival
- Drama
- Lectures, Seminars & Conferences
- Open Days & Exhibitions

Open Campus

June — September 2010

Download a pdf of
this booklet at
[www.sheffield.ac.uk/
whatson/opencampus.html](http://www.sheffield.ac.uk/whatson/opencampus.html)

University
Of
Sheffield
Events.

Photo: Joshua Holt



For more information on events at the University of Sheffield
see: www.sheffield.ac.uk/whatson



Music

SUMMER MUSIC AND ARTS FESTIVAL 2010

THURSDAY 3 – SATURDAY 12 JUNE

All events take place in Sheffield Cathedral

The result of the continuing artistic, collaborative partnership between the University of Sheffield's Department of Music and Sheffield Cathedral. The Festival delivers a jam packed series of events exploring music, film, literature, contemporary art, local history, current trends, world cultures and much more.

Tickets and Enquiries

The Students' Union Box Office

T: 0114 222 8777 (ticket sales and information)

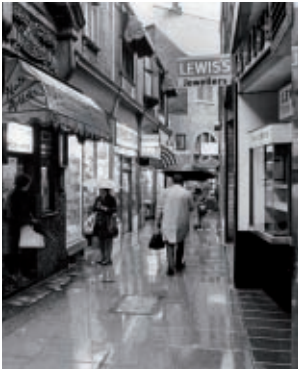
www.sheffield.ac.uk/union/services/boxoffice

Also available at www.wegotickets.com

Department of Music

T: 0114 222 0499 (enquiries only)

www.musicandartsfestival.co.uk



1970s Sheffield



Ian McMillan

THURSDAY 3 JUNE 7.30pm

THE REEL MONTY AND A SHOPAHOLIC'S GUIDE TO 1970S SHEFFIELD

Tickets £5, £3 (concessions),
£2 (students/unwaged)

The Reel Monty comprises of two short films which documented Sheffield in its 'boom and bust' era of the 1970s. "City on the Move", and "Sheffield International City" shows Sheffield depicted as a swinging city of tourism and commerce. In **The Shopaholics Guide to 1970s** The City Centre's retail heritage is remembered in an illustrated talk by Neil Anderson (author of a book with the same title), packed with rare photos and memoirs of the people that made the forgotten era when the Steel City was renowned as the shopping capital of the North!

FRIDAY 4 JUNE, 7.30pm

POETRY AND JAZZ WITH IAN MCMILLAN & IMPRESSIONS

Tickets: £8, £5 (concessions),
£2.50 (students/unwaged)

Jazz numbers will be interspersed by wise words in an entertaining and enlightening evening not to be missed!

Ian McMillan has been a poet, broadcaster, commentator and programme-maker for over 20 years. His poems have been published in many magazines and newspapers including The Observer and the Evening Standard, and broadcast on numerous television and radio shows, including BBC1's Football Focus. He also hosts BBC Radio 3's The Verb.

Impressions are an exciting jazz quintet based in Sheffield featuring the stunning vocals of Karen Lake with a cool line up of Pete Lyons on tenor saxophone, Jez Matthews on piano, Rich Keates on double bass and Brian Bestall on drums.



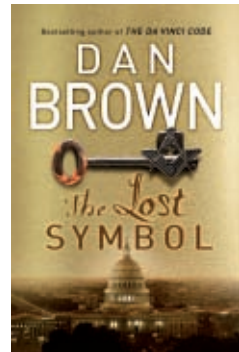
MONDAY 7 JUNE, 7.30pm

SHEFFIELD'S LOST SYMBOLS

Tickets £5, £3 (concessions), £2 (students/unwaged)

The *Lost Symbol* is a 2009 novel by American writer Dan Brown, and is the sequel to the best selling *The Da Vinci Code*. It is the third Brown novel to involve the character of Harvard University symbologist Robert Langdon, focusing on Freemasonry, the story takes the form of a deadly race through a real-world labyrinth of codes, secrets, unseen truths, and draws attention to the popularity of a visual language we have largely lost.

Sheffield is home to a number of its own lost symbols. A brief stroll around the City Centre, you will find evidence of Freemason symbolism etched on buildings dating back centuries. The Very Reverend Peter Bradley, teams up with a Freemasonry expert Dr Andreas Onnerfors to explore why Dan Brown's work is so intriguing, if the rituals and imagery described is fact or fiction, in an illustrated talk bursting with images from the book's setting. In addition they will host a tour, pointing out Sheffield's hidden symbols you never knew existed!



SATURDAY 5 JUNE, 7.30pm

KRAR COLLECTIVE

Tickets: £8, £5 (concessions), £2.50 (students/unwaged)

A stunning programme of music and dance from different parts of Ethiopia. The dancers present a number of pieces (often re-enacting scenes of village life) in colourful traditional dress and with jaw-droppingly energetic folk dances unique to Ethiopia.



Krar Collective

SUNDAY 6 JUNE, 10.30am

CHORAL EUCHARIST

Admission free and tickets are not required

Bruckner Mass in E Minor
Sheffield University Brass and Voices

SUNDAY 6 JUNE, 8.00pm

**DEPARTMENT OF MUSIC
END OF YEAR CONCERT**

Tickets: £8, £5 (concessions), £2.50 (students/unwaged)

Representing all aspects of the Department's work, the programme will include performances of orchestral, choral, chamber, world and contemporary music. The event will also mark the departure of the final year students and celebrate their achievements.





TUESDAY 8 JUNE, 7.30pm

ELECTRIC PROM – SCREAMING MALDINI

Tickets: £5, £3 (concessions), £2 (students/unwaged)

Screaming Maldini is a band of six from Sheffield who combine complex melodies and unpredictable harmonies with a lot of energy. The Electric Prom format will see the group presenting orchestral and choral arrangements of their sensational songs, combined with some of the classics in a unique and rare programme where popular music of the 21st century meets the classical greats.



WEDNESDAY 9 JUNE

TWILIGHT, VAMPIRES AND THE UNCANNY, 7.30pm

Tickets: £5, £3 (concessions), £2 (students/unwaged)

Since Stephenie Meyer's young-adult vampire-romance novel *Twilight* took the world by storm in 2005 vampires are suddenly the hot topic in present cultural trends. This illustrated talk explores our current obsession with Vampires, the mythology and history behind their existence, the bizarre concept of a vegetarian vampire, in a must see for all who currently obsessed with the Cullens, and the vampire craze!

THURSDAY 10 JUNE, 7.30pm

This event is sponsored by the Friends of Sheffield Cathedral

THE PAINTER, THE FRENCHMAN AND THE ORGANIST

*Tickets £8, £5 (concessions), £2.50 (students/unwaged)
OR With buffet afterwards
£13, £10 (concessions), £7.50 (students/unwaged)*

This event aims to explore interpretation; how Maurice Duruflé **the Frenchman** interpreted Gregorian chant and subsequently worked this material into his compositions, how Anthony Gowing **the organist** interprets what he sees on the page, and how Mark Rowan-Hull, **the painter** interprets what he hears in vibrant, colourful canvasses. In addition to hearing some of Duruflé's most loved and cherished compositions, will be the opportunity to find out about the life and work of these three extraordinary artists.

FRIDAY 11 JUNE 2.00pm

SING!

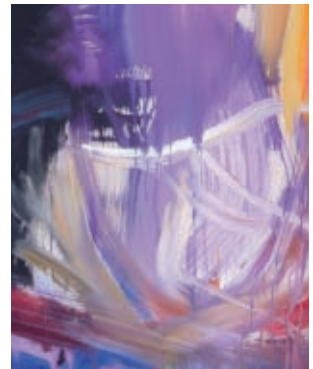
Admission free and tickets are not required

FRIDAY 11 JUNE 9.00pm

THE STRANGE CASE OF DR JEKYLL & MR HYDE, AND THE CABINET OF DR CALIGARI

Tickets: £6, £4 (students/unwaged)

A sequel event to last year's sell-out *Nosferatu the Vampyre*, two further cinematic horror masterpieces of the silent film genre. Prepare to be spooked in a late night screening, the perfect architectural setting, and improvised organ accompaniment by virtuoso Darius Battiwalla.



One of Mark Rowan-Hull's vibrant colour canvasses





Gabriel Jackson

SATURDAY 12 JUNE, 6.00pm

**CATHEDRAL CHOIRS
CONCERT with special guest
Gabriel Jackson**

£8, £5 (concessions), £2.50
(students/unwaged)

The Choir of St John the Divine Cathedral, New York, The Choir of Blackburn Cathedral, The Choir of Sheffield Cathedral. Rounding off the 2010 festival, the almighty sound of the combined cathedral choirs are met with composer Gabriel Jackson talking about his approach to composition for choirs.

The winner of the Friends of Sheffield Cathedral Composition Competition (for students of the University of Sheffield) will be announced at this event and the work premiered.

FREE LUNCHTIME RECITALS

1.15pm, Admission free and tickets not required

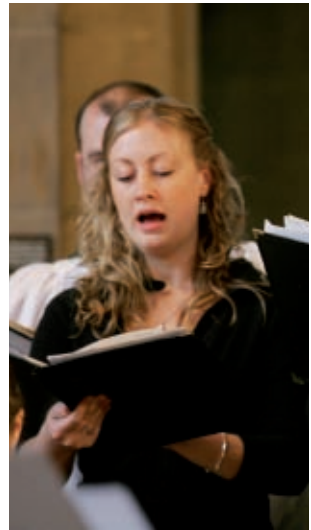
- Thursday 3 June**
Asian Music Ensemble
- Friday 4 June**
Peter Warring (*Piano*)
- Saturday 5 June**
Jessop Piano Trio

Monday 7 June
Sheffield University Big Band
(*SUBB*)

Tuesday 8 June
David Palmer (*Tenor*)
Pauline Garrett (*Piano*)

Wednesday 9 June
Lee Horne (*Piano*)

Thursday 10 June
French Music Concert:
Susan Yarnall (*Piano*)
Matthew Redfearn (*Trumpet*)
Stephanie Pitts (*Piano*)



SUNDAY 6 JUNE, 6.30pm,
TUES 8, WED 9, THURS 10 &
FRI 11 JUNE, 5.45pm,
SAT 12 JUNE, 3.00pm

CHORAL EVENSONG

Admission free and tickets are not required



The Sheffield & District
Cambrian Society



1910 - 2010

*Cymdeithas Gymreig
Sheffield a'r Cyffiniau*

**SHEFFIELD AND DISTRICT CAMBRIAN SOCIETY –
CYMDEITHAS GYMREIG SHEFFIELD AR CYFFINIAU
In Association with
The University of Sheffield Department of Music**

SATURDAY 17 JULY,
6.30pm for 7.00pm

CENTENARY CONCERT

*Firth Hall, Firth Court,
Western Bank S10 2TN
Tickets: £15*

Glain Dafydd (*Harpist*)

Côr Meibion y Traeth
(*Male voice choir*)

Robyn Lyn (*Tenor*)

Tickets available from:
secretary@sheffieldcambrians.org
or T: 0114 230 1673, further
information at:
www.sheffieldcambrians.org

Drama

UNIVERSITY DRAMA STUDIO

Shearwood Road (off Glossop Road), Sheffield S10 2TD

All productions are open to the public. Details are correct at time of publication, but please see the Drama Studio website for up-to-date information and news. www.sheffield.ac.uk/drama

T: 0114 222 0200, E: dramastudio@sheffield.ac.uk

NB: Tickets can be booked by contacting each show's box office in the details given below.



Sheffield University Drama Society

WEDNESDAY 9 – FRIDAY 11
JUNE, 7.30pm

SUNDAY MORNING AT THE CENTRE OF THE WORLD by Louis de Bernières

Tickets: £8, concessions £6
T: 0114 262 0574
www.suds.ac.uk

A slice of life on a typical Sunday morning in a typical working class community somewhere in Britain. All are here: young and old, potty and desperate, animal and corpse. SUDS' actors create a dynamic ensemble and use music, movement and comedic characterisation to bring this poetic text to life.



The Company

WEDNESDAY 16 – SATURDAY
19 JUNE, 7.30pm

TREASURE ISLAND by Robert Louis Stephenson (adapted by Alison Munro)

Tickets: £7, concessions £5, T:
0114 201 0090, E: boxoffice@thecompanysheffield.co.uk
www.thecompanysheffield.co.uk

Follow Jim Hawkins, Long John Silver and the scurvy crew in their search for treasure in this swashbuckling adventure full of thrills, spills and toasted cheese! Yo Ho Ho!

Handsworth and Hallam Theatre Company

WEDNESDAY 23 – SATURDAY
26 JUNE, 7.30pm (also
SATURDAY 26 JUNE AT
2.30pm)

THE LIKES OF US by Andrew Lloyd-Webber and Tim Rice (Sheffield premiere)

Tickets: £10, concessions £8.50
T: 0114 247 6179
www.hhtc.info

This musical was the first collaboration between the award-winning team of Tim Rice and Andrew Lloyd-Webber. It tells the story of Dr Barnardo and how he came to set up the children's homes.



The Lord's School Of Dance

THURSDAY 1 – SATURDAY 3
JULY, 7.15pm, (also SATURDAY
3 JULY, 2.00pm)

THE HUNGRY CATERPILLAR

*Tickets: £8.50 over 13,
£8 under 12 and OAPs
T: 0114 272 7286*

A vibrant and colourful
adaptation of Eric Carle's book,
The Very Hungry Caterpillar,
performed in dance, drama,
and song. A wonderful family
show displaying Sheffield's
young talent.



**Felicity White School of
Dance**

THURSDAY 8 – SATURDAY 10
JULY, 7.00pm

DANCE ROUND DERBYSHIRE

*Tickets: £8, concessions £5
T: 01433 630 865
E: novfel@tiscali.co.uk*

We invite you to a tour round
Derbyshire. See the ducks and
swans from Bakewell Bridge
and the Garland Dance in
Castleton. Visit Buxton Spa
and the Fiddler, the 9 Ladies
at Stanage Edge finishing with
a dance version of The Roses
of Eyam.

**Sharon Berry School of
Theatre Dance**

WEDNESDAY 14 – SATURDAY 17
JULY, 7.15pm, (also SATURDAY
17 JULY, 2.00pm)

SAVE THE LAST DANCE

*Tickets: £9, concessions,
OAP and children £8
(no concessions Saturday
evening), T: 0114 246 6126
E: ps.berry@virgin.net*

Come along and enjoy
entertainment for all ages of
song and dance. Performed by
the pupils of the school aged
3 to 23. All proceeds from the
programme sales/advertising
to The Children's Hospital
Charity – Patient Interactive
Systems.

**Velma Furniss School of
Theatre Dance**

MONDAY 19 & TUESDAY 20
JULY, 7.15pm

SUMMER SHOWTIME

Tickets: £6, T: 0114 240 0011

Come and join our end of term
production, a colourful display
of song and dance featuring
children from three years of
age to adults. Our guest artist
will really entertain you and we
are sure you will thoroughly
enjoy our evening of happiness
featuring all types of dance and
music.

Fusion Youth Theatre

THURSDAY 22 & FRIDAY 23
JULY, 7.30pm

**LONDON ROAD by Heidi
Riley, Gabrielle Miles and
Charlotte Stokes**

*Tickets: £8/£12
T: 0114 250 0600, E: sheffield@
fusionyouththeatre.com
www.fusionyouththeatre.com*

This original production
combines Sheffield pop
anthems with an original
script to tell the story of six
estranged childhood friends
who reunite as adults to
discover the homes of their
youth are under threat.
Together they vow to protect
their community, until a secret
is revealed that could devastate
everything.

Lectures, Seminars & Conferences

ARTS-SCIENCE ENCOUNTERS

The Arts meet the Sciences and Social Sciences in a series of talks and performances where anything can happen. Places at these lectures are free and open to all. They are pitched at non-specialists and can be booked online at:

www.sheffield.ac.uk/english/arts-science/index.html

Arts-Science Encounters are a series of talks bringing together researchers from across the University's five faculties and recognised external speakers. The topics are broad ranging, including speakers from more than twenty disciplines, ranging from History, English, Music, Geography and Politics, to Chemistry, Physics and Mathematics, Medicine, Neuroscience and Psychology. Talks are presented by visiting academics and performers from Aberdeen, Leeds, Liverpool, London, Oxford and elsewhere.



TUESDAY 1 JUNE, 5.30–6.30pm
followed by a Q&A and wine reception

EVERY TOOL SHAPES YOUR MIND: THE IMPLICATIONS OF TECHNOLOGY

ICOSS Building, 219 Portobello St 4DP

The story of human history can be narrated through the evolution of our tools.

What were the most important tools of our past, and what will be the tools that shape our humanity in the 21st century? To discuss these questions, we bring together distinguished Archeologist Professor John Barrett and Architect Professor Jeremy Till, formerly a Dean at Sheffield and now Dean of Architecture and Built Environment at the University of Westminster. Supported by ICOSS

TUESDAY 15 JUNE, 5.30–6.30pm
followed by a Q&A and wine reception

WHAT MAKES FOR A BETTER SOCIETY?

The Douglas Knop Research Centre, Humanities Research Institute, 34 Gell Street S3 7QY

A panel discussion with leaders of the Sheffield research community: how do we envisage a better society for our future? On the panel are Professor Richard Jones, a leading expert in Nanotechnology and Pro-VC for Research and Innovation at The University of Sheffield, Professor Andrew Vincent (Politics), and Dr Benjamin Ziemann (History). Supported by ICOSS

MONDAY 21 JUNE, 5.30–6.30pm

MARCUS DU SAUTOY: THE ART OF MATHEMATICS

St George's Church, Portobello St 4DP

If the arts have their sciences, the sciences have their arts. To round off our 2010 Encounters with the second annual Art-Science Public Lecture, we will hear from Oxford University Professor Marcus du Sautoy as he explains why and how mathematics may be considered a form of art. Marcus is Simonyi Professor for the Public Understanding of Science, and arguably the country's finest and most persuasive spokesman for research into science. Find out why, by coming along to this second annual public Arts-Science lecture. His recently published books, *The Music of the Primes* and *Finding Moonshine*, will be available for sale and signing at the event.

This talk is suitable for people aged 13+, and young people are especially welcome to attend.

MANAGEMENT SCHOOL SEMINAR

WEDNESDAY 9 JUNE, 4.00–6.00pm

TECHNOLOGICAL CHANGE AND THE MANAGEMENT OF PUBLIC SERVICES

*Conference Room, ICSS Building,
219 Portobello St 4DP*

*Places at this event are free but must be booked in advance through Mandy Robertson
T: 222 3380 E: m.robertson@sheffield.ac.uk*

Presented by Christopher Pollitt AP/BOF, Research Professor of Public Management at the Katholieke Universiteit Leuven in Belgium.

SPECIAL GUEST LECTURE

THURSDAY 17 JUNE, 6.00pm

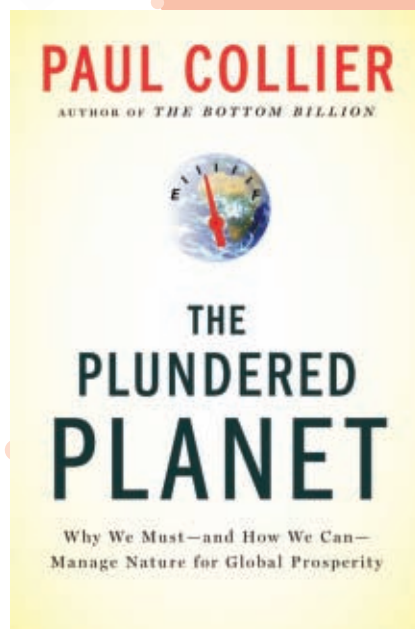
The Plundered Planet: Why We Must And How We Can Manage The World's Natural Resources to Ensure Global Prosperity

by Paul Collier, Professor of Economics and Director of the Centre for the Study of African Economies at Oxford University

*Convocation Hall, Octagon Centre,
Western Bank, S10 2HB*

*Places are free but must be booked in advance at: www.sheffield.ac.uk/whatson/universitylectures/plunderedplanet.html
T: 0114 222 1030*

A former director of Development Research at the World Bank, Paul Collier is the author of the award-winning *The Bottom Billion*, among other books. *The Bottom Billion* was greeted as a groundbreaking book when it appeared in 2007, winning the Estoril Distinguished Book Prize, the Arthur Ross Book Award, and the Lionel Gelber Prize. The Economist wrote that it was “set to become a classic.” The Financial Times praised it as “rich in both analysis and recommendations.” Now, in *The Plundered Planet*, Collier builds upon his work on developing countries and the poorest populations to confront the issues involving natural assets. Proper stewardship of these assets is a matter of planetary urgency: unregulated exploitation of natural resources accelerates global warming, overburdens world food markets, exacerbates existing unrest, and leads to new and ever more desperate armed conflicts. *The Plundered Planet* charts a course between unchecked profiteering on the one hand, and environmental romanticism on the other to offer realistic and sustainable solutions to these dauntingly complex issues.





ADVANCE NOTICE

WEDNESDAY 27 OCTOBER,
6.30pm

THE FUTURE OF THE UNITED KINGDOM – A PERSONAL PERSPECTIVE

By the Rt Hon David Blunkett

The final lecture in the
Cambrian Society Centenary
Lecture Series

Venue to be confirmed.

During 2010, the Centenary Year of The Sheffield and District Cambrian Society, the University and the Society have hosted a series of prestigious lectures to mark the occasion.

Entrance is free of charge but by ticket only. Places will be limited. There will be an optional drinks reception immediately after the lecture at a charge of £3 per head. Tickets for the reception will be issued separately. Further information and a booking form will be made available from Wednesday 6 October. The Venue will be on the central campus, but will be confirmed by 6 October. For further information on this lecture series go to:

[www.sheffield.ac.uk/
whatson/universitylectures/
cambriansociety.html](http://www.sheffield.ac.uk/whatson/universitylectures/cambriansociety.html)

INSTITUTE OF WORK PSYCHOLOGY CONFERENCE 2010

MONDAY 28 JUNE – THURSDAY 1 JULY

**WORK, WELL-BEING AND PERFORMANCE: NEW
PERSPECTIVES FOR THE MODERN WORKPLACE** Sponsored
by Creative Sheffield and Business Advantage

Mercure St Paul's Hotel, 119 Norfolk Street S1 2JE

For further information and details of rates contact: Carol Tighe,
Business Manager, T: 0114 222 3227 E: c.tighe@sheffield.ac.uk
www.conference.iwp.dept.shef.ac.uk

The Institute of Work Psychology at The University of Sheffield is a distinctive community of researchers focused on work psychology and related areas, such as organisational behaviour and human resource management. This conference has been publicised worldwide to much initial interest and enthusiasm from both academics and practitioners across a range of disciplines. We anticipate an audience of some 200 – 300 delegates for whom this will be a major showcase for their research. Three internationally recognised keynote speakers have been confirmed for the conference: Gary Johns from Concordia University Canada, Ann Marie Ryan from Michigan State University, USA and Arnold Bakker from Erasmus University, Netherlands. In addition we will also have a keynote from Rear Admiral Philip Willcocks, Royal Navy.

Workshops will be delivered on topics ranging from workplace coaching, selecting a positive workforce, organisational stress interventions, diversity, work-life balance, and leadership. The statistics courses include half day session on Multi-level modelling followed by another half day session on team level statistics. There will also be an all day session on 'Structural Equation Modelling using Mplus. The week kicks off with a Postgraduate and Early Careers Event.

THE CENTRE FOR THE STUDY OF CHILDHOOD AND YOUTH

TUESDAY 6 – THURSDAY 8
JULY

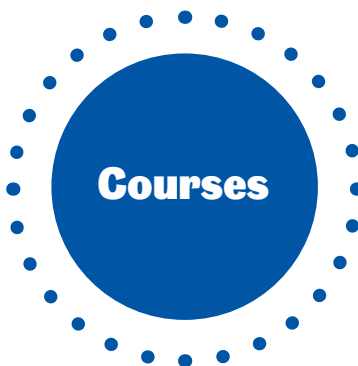
CHILDHOOD AND YOUTH IN TRANSITION 3rd International Conference

Kenwood Hall Hotel, Sheffield
Fees apply. For further
information and to book,
please see the website:
www.sheffield.ac.uk/cscy
E: allison.james@sheffield.ac.uk
or
d.j.lessells@sheffield.ac.uk
T: 0114 222 6069

In the context of global social, political and economic changes the conference this year will explore the ways in which these broad shifts are having an impact on ideas of childhood and youth and on children's and young people's everyday lives.

Places are limited so early booking is recommended.

A welcome wine reception and poster session will be held on Tuesday evening (6th July) at Kenwood Hall and opportunities will be available for delegates to participate in the Children's Film Festival held in Sheffield. The conference dinner will take place on Wednesday evening at the Cutler's Hall, Sheffield. (7th July).



THE CONFUCIUS INSTITUTE

MONDAY 14–SUNDAY 18 JUNE OR MONDAY 20–FRIDAY
24 SEPTEMBER, 7.00–9.00pm

SURVIVAL CHINESE – 5-DAY INTENSIVE COURSE

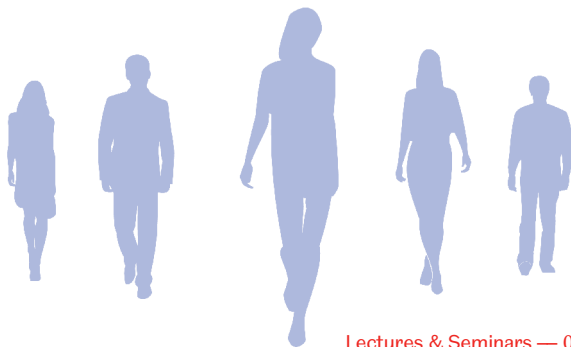
The Hicks Building, Western Bank
Course Fee £50 (University staff/general public), £40
(students). To book a place please contact the Confucius
Institute: E: confucius@sheffield.ac.uk T: 0114 222 8332

Survival Chinese is an intensive 10-hour language course for learners with little or no prior knowledge of Mandarin. The course is taught by professional instructors and introduces you to some of the most common everyday situations, with emphasis on listening and speaking skills. Lessons involve regular practice with native speakers. Be prepared – learn the language!

COURSES FOR THE PUBLIC

The Institute for Lifelong Learning offers adult learners a wide range of courses across a broad range of subjects, from local history to community work. For further details and to request a brochure

T: 0114 222 7000 or see the website: www.sheffield.ac.uk/till/



Open Days & Exhibitions

POSTGRADUATE VISIT AFTERNOONS

TUESDAY 1 JUNE, THURSDAY 15 JULY, THURSDAY 5 AUGUST, TUESDAY 14 SEPTEMBER

Find out more and register at: www.sheffield.ac.uk/postgraduate

Our Postgraduate Visit Afternoons give you an opportunity to explore the campus for yourself and learn more about postgraduate study at the University of Sheffield.

THE UNIVERSITY FINE ART SOCIETY (SUFAS)

TUESDAY 8–FRIDAY 25 JUNE, 9.00am–5.30pm – INTRODUCTORY TALK AT 6.00pm ON 8 JUNE

JUNE GHOSTS

A special retrospective exhibition featuring the work of Bert Broomhead (1921 – 1990)

Turner Glass Museum on Floor E of the Sir Robert Hadfield Building (off Mappin Street)
Entry free
www.sufas.group.shef.ac.uk

The artist was a Bakewell man who trained at Sheffield College of Art and Bretton Hall Art College and the aim of the exhibition is to give a wider audience the chance to see his work. This includes

oils, watercolours, woodcuts and drawings, which reflect his passion for the landscapes of the Peak District around Bakewell; he was also much interested in still life and portraiture. He was a great admirer of Van Gogh and many pieces reflect this influence.

Most of the works are owned by the artist's daughter Amaryllis and have rarely been exhibited before so this is a unique opportunity to see the work of an accomplished but little-known artist. A limited number of works will be for sale.



STORYING SHEFFIELD – EXHIBITION AND SHOWCASE EVENT

FRIDAY 11 JUNE, 10.00am–5.00pm (Exhibition), 2.00pm (showcase)

Jessop West Exhibition Space 1 Upper Hanover Street
Sheffield S3 7RA

Read more at: www.storyingsheffield.com

An exciting and innovative art and community project in which undergraduates and people from the city are working together to produce stories, artwork, films, digital artefacts, and many other representations of the lives of Sheffield people, and the 'life' of Sheffield.

As part of this a showcase event will be held at 2.00pm at which the story of the project will be presented.



CREATIVE SCIENCE FAMILY WORKSHOPS

Part of Sheffield Children's Festival 2010

SATURDAY 19 JUNE, 11.00am–12.30pm & 1.00pm–2.30pm

The Showroom Cinema, Paternoster Row (opposite the railway station in the city centre)
To book a place: T: 0114 222 1030
E: j.newcombe@sheffield.ac.uk

Come and get inspired by the world of science. Researchers from the department of Molecular Biology & Biotechnology at The University of Sheffield will take you through a series of hands-on activities to discover the mysteries of DNA, the shapes of proteins, the tricks of microbes, the invisible world of cells, the power of microscopy, and much more. You will be able to design your own bacteria, protein or cell during the workshop. A fun and creative workshop for children and adults.

For further information, contact Dr Sandrine Soubes, s.soubes@sheffield.ac.uk

Children between 8–12 years of age must be accompanied by an adult.

MONDAY 14 JUNE–FRIDAY 2 JULY, 9.00am–5.30pm

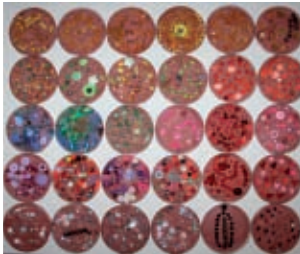
INSPIRED BY SCIENCE

The Workstation, Paternoster Row (opposite the railway station in the city centre)

Entry free

www.showroomworkstation.org.uk

We will be showcasing the poetry, drama and artwork inspired by science, that pupils from Hunter's Bar junior school have developed. Over the last three years, children in hunter's bar junior school have been involved in science workshops delivered by scientists from the Department of Molecular Biology and Biotechnology at the University of Sheffield. On display will be an illustration of how the science the pupils learnt enriched their creativity.



Taffy Thomas MBE, professional Storyteller

THE CONFUCIUS INSTITUTE

SATURDAY 19 JUNE, 1.30–2.15pm (children 5–10 years), 2.45–3.30pm (children 11+ years)

AN AFTERNOON OF STORIES AT THE CONFUCIUS INSTITUTE

John Carr Design Suite, C29, Portobello Centre, 9 Mappin Street, S1 4DT

*Admission Free, but places must be pre-booked via Xinqun Hu/Caterina Weber
T: 0114 222 8447/8332
E: confucius@sheffield.ac.uk*

The Confucius Institute will host two storytelling sessions with Taffy Thomas MBE, professional storyteller. The programme will include tales from ancient China. This is a family-friendly event open to everyone. Bookings from schools as well as the general public are most welcome.

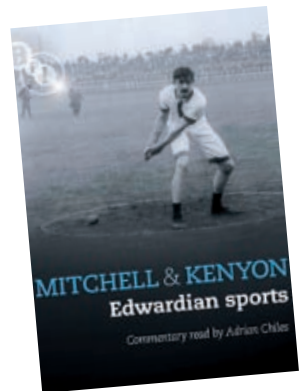
(For those with an interest in Chinese, a Survival Chinese 5-day course is listed in this booklet under 'courses')

MITCHELL AND KENYON: EDWARDIAN SPORTS

WEDNESDAY 30 JUNE, 7.00pm

Firth Hall, Firth Court, Western Bank. Entry is free of charge but will be on a first-come, first-served basis on the night

Professor Vanessa Toulmin, Director of the National Fairground Archive, will present a sample of film materials on sport in pre-War Britain from the extensive Mitchell and Kenyon archives. Her narration will be accompanied by music produced for the occasion by Sheffield band The Everly Pregnant Brothers. This event is part of the programme for the Conference 'Visual Physical: Discourses on Sport and Performance Cultures', organised by the Department of Hispanic Studies on 1–2 July, and is generously supported by the Faculty of Arts and Humanities and the School for Modern Languages and Linguistics.



23rd GREAT SHEFFIELD ART SHOW

PREVIEW THURSDAY 8
JULY–SUNDAY 11 JULY
(advance bookings only)
10.00am–6.00pm

The Octagon Centre, Western Bank, S10 2TJ

Tickets: £4.50 (adults) available on the door (accompanied children under 16 free)

*For details on how to exhibit and to book preview tickets go to: www.gsas.co.uk
T: 0114 225 9989*

The show returns for its 23rd year and will showcase over 1,500 pieces by local artists.

HERITAGE OPEN DAY

FRIDAY 10 SEPTEMBER,
10.00am–4.00pm

WESTERN BANK LIBRARY REDEVELOPMENT

Western Bank Library

Western Bank Library is 50 years old and this landmark building has recently undergone an extensive refurbishment programme. Starting in July 2009, the



project aimed to improve facilities for researchers and other users of the Library. One of the highlights is a new, quality exhibition space attracting high profile exhibitions. Other features include the installation of new

study areas, soft seating, group study rooms and individual study spaces. Full details of the project can be found at:

www.sheffield.ac.uk/library/libnews/wblrelevel.html

It is expected that visitors to this Heritage Open Day will have an opportunity to tour the building and see these excellent new facilities at first hand. Members of staff will be on hand to guide tours and answer questions. Further details will be available from the beginning of June at:

www.sheffield.ac.uk/whatson/heritageopenday2010.html



heritage open days

For more on national Heritage Open Days

www.heritageopendays.org.uk

EXECUTIVE MBA OPEN EVENING

WEDNESDAY 29 SEPTEMBER,
6.30–8.00pm

*ICOSS Building, Portobello
S1 4DP*

Entry is free of charge, but please book your place at: <http://emba.group.shef.ac.uk>

Come and find out more about studying for a part-time MBA. Our Open Evenings are an opportunity to hear about the content of the programme and to talk to some of our current and former students and staff. We also have information about scholarships and funding available.

MISCELLANEOUS

FREE ROUTINE DENTAL TREATMENT

For further information please call the Charles Clifford Dental Hospital on T: 0114 271 7992

The University has taken on extra students to help combat the national shortage of dental professionals and the Charles Clifford Dental Hospital is offering free ROUTINE dental treatment to hundreds of people in Sheffield. The treatments will be performed by trainee dentists and hygiene therapy students from the University's School of Clinical Dentistry. All the work will be closely supervised by experienced dentists, consultants and hygienists and therapists and after an initial assessment appointment, further straightforward treatments could be offered.

Please get in touch if you:

- Are happy to be treated by a student
- Can attend on time, within office hours and within the University timetable
- Understand that treatment may take longer than with a GP
- Are NOT already on a treatment pathway with a GDP

We cannot accept patients with complex medical conditions or those that require complex treatments.





health

The University's
Fitness Centre

One Month Fitness Memberships

Only
£20 Off Peak
£30 Peak



Try it!



Like it!



Love it!

Email: membership.enquiries@s10health.co.uk

Call: 0114 222 6969 www.usport.co.uk

S10health Fitness Centre The University of Sheffield, Goodwin Sports Centre, Northumberland Road, Sheffield S10 2TY



Members must be 18 years or over

Offer not open to current members. Off Peak hours: 7am to 5pm Monday to Friday (last entry 4.15pm) and all day at weekends. All information correct at time of going to print. S10health reserves the right to amend prices and withdraw products.



Guest accommodation at The University of Sheffield

- High standard en-suite rooms starting from just £31 per person per night excl VAT
- Conveniently located for the University, city centre and the Peak District
- Ideal for visiting friends and family or social groups looking for great value accommodation
- Great hospitality, free toiletries and internet provided

For further details or to book online visit:

www.sheffield.ac.uk/accommodation/guest

Procedure for booking University Facilities



The University Of Sheffield.

Drama Studio

Contact: Mr R T Grocock,
Theatre Manager, Shearwood
Road, T: 0114 222 0200

Conference Office

For fully inclusive events packages and guidance throughout the booking process. Please contact the Conference Office, T: 0114 222 8822
E: conferences@sheffield.ac.uk

University meetings rooms

Contact: Corporate Services,
T: 0114 222 9060

Support the arts through the Alumni Foundation

The Alumni Foundation channels donations from alumni and friends of the University to the most deserving recipients across campus. It makes a large number of small grants to a range of projects that add life to the University, and encourages student involvement in areas such as drama, music, sport, art and culture.

The Alumni Foundation can only distribute as much money as it receives in donations. It is completely reliant upon the generosity of donors. We are very grateful for their support.

To support the work of the Alumni Foundation, please make a donation to the Alumni Fund. You can find out more by visiting www.sheffield.ac.uk/alumni or contact Ruth Stanley on 0114 222 1075, email r.e.stanley@sheffield.ac.uk

Sports facilities

Contact: USport, Goodwin Sports Centre,
T: 0114 222 6999

Library

Those people wishing to consult materials from the Library's collections should telephone 0114 222 7204

Open Campus gives details of events organised by The University of Sheffield that are open to members of the public. Details of how to obtain tickets, together with a contact name and number, are given when necessary.

Every effort has been made to ensure the accuracy of the information given in this leaflet, but the University can accept no responsibility for any errors or omissions.

The text of this leaflet can be supplied in larger print formats if needed. Please contact Jeanette Newcombe, tel: 0114 222 1030, email: j.newcombe@sheffield.ac.uk



© Cartographic Services, University of Sheffield
© Crown Copyright reserved ED100018617