



The
University
Of
Sheffield.

- Music
- Drama
- Lectures, Seminars & Conferences
- Open Days, Exhibitions & Fairs

Open Campus

October 2010 — January 2011

50 Years of
Western Bank
Library

19 October -
14 January

Gay Icons
Project

19 November -
11 December



University
Of
Sheffield
Events.

Western Bank Library Exhibition Gallery by
Ian Spooner

Download a PDF of this booklet at:

www.sheffield.ac.uk/whatson/opencampus.html



For more information on events at the University of Sheffield
see: www.sheffield.ac.uk/whatson

The Million Book Library

19 October 10 -
14 January 11



CELEBRATING 50 YEARS OF WESTERN BANK LIBRARY

TUESDAY 19 OCTOBER –
FRIDAY 14 JANUARY 2011.
9.00am – 9.00pm Monday to Friday;
10.00am to 6.00pm Saturdays &
Sundays. Exhibition closed from
5pm Friday 24 December - to
9.00am - Tuesday 4 January 2011

Western Bank Library, S10 2TN

The 1950s saw both an expansion in student numbers and a growing collection of books at the University of Sheffield. Stimulated by this impetus, the University announced a national competition for a new master plan for the Western Bank site, in which a library was to hold pride of place. Architects Gollins Melvin Ward and Partners presented the winning competition entry. Typical of a new wave of architects that

established Modernism in Britain, Gollins Melvin Ward and Partners designed a library of pure cubic form, inspired by one of the pioneering masters of Modern architecture, Ludwig Mies van der Rohe. Join the University and Library as they mark this special occasion, by visiting the exhibition. Take a journey through the historical development of the Western Bank site, see the architectural vision of Gollins Melvin Ward and discover the changing face of the University's Libraries in the 21st Century.

Curated by Jacky Hodgson and Karen Middlemast, The University of Sheffield Library. Special Advisor: Professor Peter Blundell Jones, The University of Sheffield School of Architecture.

T: 0114 222 7258,
E: exhibitions@sheffield.ac.uk,
www.shef.ac.uk/library/exhibition

Gay Icons Project

19 November -
11 December

GAY ICONS PROJECT

For tickets and enquiries

T: 0114 222 0499

E: concerts@sheffield.ac.uk

Organised in conjunction with the Department of Music Concert Series.

The Gay Icons Project is a diverse and thought-provoking series of events that aims to explore the contrasting ideas behind gay iconography. The icons in the programme represent traditional attributes of a gay iconography; all icons are homosexual themselves

and pioneering in their relative fields across the following cultural practices: Music, Social Impact, Fashion and Trendsetters, Literature and the Stage.

An accompanying exhibition (or rather interactive experiment) will put forward some of the more contemporary ideas behind gay iconography. We'll discover who inspires, motivates and captivates homosexual people living in Sheffield, and which iconic homosexual figures provide inspiration for heterosexual people too. To contribute visit www.gayiconsproject.co.uk and tell us who your gay icons are, why are they icons to you and what you think makes a gay icon. The exhibition takes place during the last week of events.

www.gayiconsproject.co.uk

SHEFFIELD'S GAY ICONS EXHIBITION

SATURDAY 4 DECEMBER –
THURSDAY 9 DECEMBER
Open daily 10.00am – 6.00pm

Jessop West Exhibition Space

CLIMAX: GAY ICONS SPECIAL (OFFICIAL LAUNCH PARTY)

FRIDAY 19 NOVEMBER, 10.30pm

Students' Union

LEONARD BERNSTEIN – THE GREATEST MUSICAL PERSONALITY OF THE 20TH CENTURY

TUESDAY 23 NOVEMBER, 6.45pm

Firth Hall, Firth Court, S10 2TN

6.45pm: Pre-Concert Talk: Bernstein and the Broadway Musical (speaker to be confirmed);

7.30pm: Concert; 8.15pm: Interval Talk: Bernstein and the Ballet (Sophie Redfearn, PhD Student, University of Sheffield)

JACKIE KAY

WEDNESDAY 24 NOVEMBER, 6.30pm

Firth Hall, Firth Court, S10 2TN

ALEXANDER MCQUEEN – GENIUS OF A GENERATION

THURSDAY 25 NOVEMBER, 6.30pm

Firth Hall

QUENTIN CRISP

FRIDAY 26 NOVEMBER, 6.30pm

Firth Hall



Quentin Crisp

JOE ORTON

SUNDAY 28 NOVEMBER, 6.30pm

Firth Hall

WINNARETTA SINGER – THE PRINCESSE DE POLIGNAC

TUESDAY 30 DECEMBER, 6.45pm

Firth Hall

DAVID AND JONATHAN – THE BIBLE'S SAME SEX COUPLE?

WEDNESDAY 1 DECEMBER, 6.30pm

*Humanities Research
Institute, Gell Street, S3*

ANNE LISTER – DECODING THE FIRST MODERN LESBIAN'S DIARIES

THURSDAY 2 DECEMBER, 6.30pm

Firth Hall

LEIGH BOWERY

FRIDAY 3 DECEMBER, 6.30pm

Firth Hall

GAY ICONS THEME NIGHT

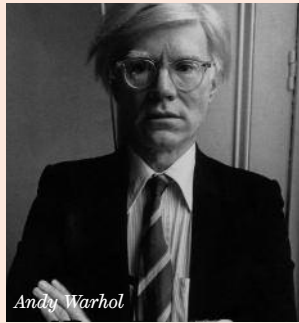
FRIDAY 3 DECEMBER, 10.30pm

*Dempsey's Nightclub,
Hereford Street, S1 4PR*

SCREEN TESTS: ANDY WARHOL FILMS SUSAN SONTAG

SUNDAY 5 DECEMBER, 2.00pm

Firth Hall



Andy Warhol

PETER TATCHELL

MONDAY 6 DECEMBER, 6.30pm

Firth Hall

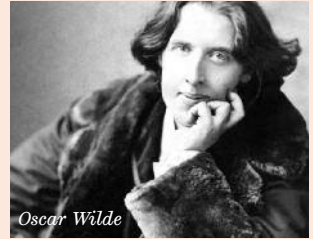


Peter Tatchell

THE SECRET LIFE OF OSCAR WILDE

TUESDAY 7 DECEMBER, 6.00pm

Firth Hall



Oscar Wilde

ANDRÉ GIDE

WEDNESDAY 8 DECEMBER, 6.30pm

Humanities Research Institute

BENJAMIN BRITTEN AND PETER PEARS

THURSDAY 9 DECEMBER, 6.45pm

Firth Hall

SHOWROOM CINEMA FILMS

FRIDAY 3 DECEMBER -
SATURDAY 11 DECEMBER

*Showroom Cinema,
Paternoster Row, S1 2BX
T 0114 275 7727*

Give Me Your Hand

Friday 3 December, 6.00pm

And Then Came Lola

Sunday 5 December, 6.00pm

Plan B

Friday 10 December, 6.00pm

Gay Sex in the 70's

Saturday 11 December, 6.00pm

SHOWROOM CINEMA END OF PROJECT PARTY

SATURDAY 11 DECEMBER, 7.15PM

*Showroom Cinema,
Paternoster Row, S1 2BX*



Music

DEPARTMENT OF MUSIC AUTUMN 2010 CONCERTS

Tickets available from:

The University of Sheffield Cash Office,
University House, Western Bank, (Mon-Fri 9.30am-4.30pm)

Sheffield Student Union Box Office, T: 0114 222 8777

Online at: www.sheffield.ac.uk/concerts

On the door half an hour before the start of each concert
(subject to availability)

www.sheffield.ac.uk/concerts

T: 0114 222 0499, E: concerts@sheffield.ac.uk

facebook www.facebook.com/tuosconcerts

twitter @tuosconcerts

All details are accurate at the time of going to print, but are subject to change.



EVENING CONCERTS

All in Firth Hall, Firth Court, S10 2TN, unless otherwise stated.

THE WELL-TEMPERED CLAVIER

TUESDAY 12 OCTOBER, 7.30pm

Peter Hill *Piano*

Highlights from what many consider to be some of the finest keyboard music ever written. Bach's Well-Tempered Clavier takes the keyboard player on an epic journey, with pairs of preludes and fugues in all the 24 possible major and minor keys.

Tickets: £8, £5 (concessions and staff), £2.50 (students/unwaged)

MOROCCAN MELODIES

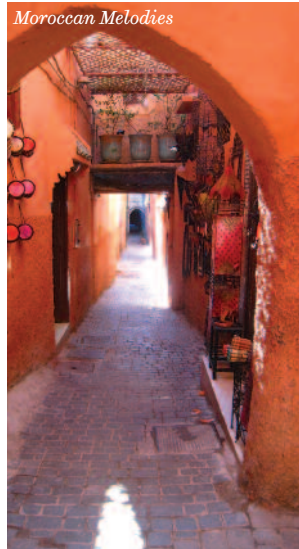
Hassan Errajji
(oud) and band

TUESDAY 19 OCTOBER, 7.30pm

Hassan Errajji is a blind Moroccan Master Musician - a singer songwriter, multi-instrumentalist, entertainer, arranger and composer with a highly respected international reputation. Expect to see a danceable contemporary global sound re-igniting the ancient &

magical fire of stately bass & derbuka-driven Berber rhythms, and move effortlessly across a glamorous mosaic of lush Arabic oud & qanun power-chords and soaring taarab-style strings.

*Tickets: £8, £5
(concessions/staff),
£2.50 (students/unwaged)*



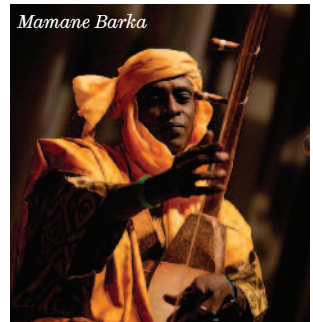
THE LONE MASTER OF THE WEST AFRICAN BIRAM

Mamane Barka *biram*
Oumarou Adamou *percussion*

TUESDAY 9 NOVEMBER,
7.30pm

A night in the company of Mamane Barka is a chance not just to experience a beautiful, forgotten music but also to hear the fascinating story of Mamane Barka's quest to rescue the biram, a sacred harp, from extinction.

*Tickets: £8, £5
(concessions/staff),
£2.50 (students/unwaged)*



THE LEONARD BERNSTEIN LEGACY

Part of the Gay Icons Programme, see page 01

TUESDAY 23 NOVEMBER,
from 6.45pm

6.45pm: Pre-Concert Talk: Bernstein and the Broadway Musical (speaker to be confirmed);

7.30pm: Concert; 8.15pm: Interval Talk: Bernstein and the Ballet (Sophie Redfeare, PhD Student, University of Sheffield)

Tickets: £8, £5 (concessions/staff), £2.50 (students/unwaged).

There is no admission charge for the talks.

THE SALON OF THE PRINCESSE DE POLIGNAC

Part of the Gay Icons programme – see page 01

TUESDAY 30 NOVEMBER,
from 6.45pm

6.45pm: Pre-Concert Talk: Parisian Salon Culture (Caroline Potter – Reader of Music, University of Kingston), 7.30pm Concert

Tickets: £8, £5 (concessions/staff), £2.50 (students/unwaged).

There is no admission charge for the talk.

MARK PADMORE: THE BRITTEN - PEARS CONNECTION

Part of the Gay Icons programme, see page 01

THURSDAY 9 DECEMBER,
from 6.45pm

6.45pm Pre-Concert Talk - Benjamin Britten's Choice of Texts: Valentine Cunningham (Professor of English Language and Literature – University of Oxford); 7.30pm: Concert One of Britain's finest tenors,

Mark Padmore has established a flourishing career in opera, concert and recital, his performances gaining particular notice throughout the world.

Tickets: £8, £5 (concessions/staff), £2.50 (students/unwaged).

There is no admission charge for the talk.



SOUND JUNCTION AUTUMN 2010

A programme of events exploring the latest and greatest in computerised sound. This autumn's programme includes new sonic art from composers working at The University of Sheffield Sound Studios and talks /concerts from international guests, who are key players in the development of sonic arts.

TALK AND SOUNDS FROM JAMES DASHOW (Rome)

MONDAY 15 NOVEMBER, 4.10pm
Humanities Research Institute, Gell Street, S3 7QY

James Dashow has been a leading figure in the development of computer music since the 70s and was instrumental in the development of the MUSICx series of computer music languages.

Admission free and tickets are not required.

TALK AND SOUNDS FROM JONTY HARRISON (Birmingham)

MONDAY 6 DECEMBER, 4.10pm

Humanities Research Institute, Gell Street, S3 7QY

Jonty Harrison continues to direct BEAST (Birmingham ElectroAcoustic Sound Theatre, the internationally renowned loudspeaker performance system).

Admission free and tickets are not required.

CONCERT

THURSDAY 16 DECEMBER, 7.30pm

Drama Studio

University of Sheffield Sound Studios now boast an impressive pool of experimental artists and programmers and provide numerous exciting creative and technical educational opportunities in state-of-the-art facilities. This concert will see work premiered by University of Sheffield Sound Studios composers.

Tickets: £5, £3 (concessions/staff), £2 (students/unwaged)

WORKSHOP

FRIDAY 17 DECEMBER, 11.00am

Drama Studio

A free open workshop for members of the public on sound diffusion using the Sound Studios equipment. If you wish to take part please do contact USSS for details, via the website: www.sheffield.ac.uk/uss

Admission free and tickets are not required but contact USSS in advance if you wish to attend.

DEPARTMENT OF MUSIC ENSEMBLES

All 7.30pm in Firth Hall, Firth Court, S10 2TN.



SHEFFIELD UNIVERSITY NEW MUSIC ENSEMBLE

TUESDAY 2 NOVEMBER

An exploration of late 20th century and 21st century repertoire and premieres of new compositions by student composers.

Tickets: £5, £3 (concessions/staff), £2 (students/unwaged)

ELGAR STRING ORCHESTRA AND SHEFFIELD UNIVERSITY CHAMBER CHOIR HAYDEN: THE NELSON MASS

TUESDAY 16 NOVEMBER

Elgar: Introduction and Allegro, Mozart: Serenata Notturna, K. 239, Haydn: Missa in Angustiis (Nelson Mass).

Tickets: £8, £5 (concessions/staff), £2.50 (students/unwaged)

SHEFFIELD UNIVERSITY WIND ORCHESTRA A MASQUE FOR TODAY

SATURDAY 20 NOVEMBER

Kenneth Hesketh: Masque, Nigel Hess: Catskills, Gareth Widdowson: SL-9, Fergal Carroll: Winter Dances, Martin Ellerby: New World Dances, Wouter Lenaerts: Elegja Op11, Joseph Horowitz: Bacchus on Blue Ridge.

Tickets: £5, £3 (concessions/staff), £2 (students/unwaged)

SHEFFIELD UNIVERSITY SYMPHONY ORCHESTRA

SUNDAY 12 DECEMBER

Music to include... Vaughan Williams: Five Mystical Songs

Tickets: £8, £5 (concessions/staff), £2.50 (students/unwaged)

RUSH-HOUR CONCERTS

Beat the traffic, avoid the public transport rush and unwind before going home after a hard day's work.

MONDAYS 5.30pm
(doors open at 5.00pm)

Firth Hall, Firth Court, S10 2TN

8 NOVEMBER,
**Sheffield University
Jazz Orchestra**

15 NOVEMBER, **Athalia Ensemble**

22 NOVEMBER, **Jessop Sinfonia**

29 NOVEMBER,
Chinese Music Ensemble

6 DECEMBER,
Sheffield University Big Band

13 DECEMBER,
**French Choral Music for
Christmas - Sheffield University
Vocal Consort**

*Tickets £2.50, and only available
to purchase on the door, and not
in advance from the box offices.*

FREE LUNCHTIME CONCERTS

An alternative, informal way
to spend part of a lunch hour.

THURSDAYS 1.10pm
(doors open at 12.45pm)

Drama Studio, Shearwood Road

14 OCTOBER, **Gary O'Shea piano**

21 OCTOBER,

James Atashroo trumpet

28 OCTOBER, **Sam Jones clarinet**

4 NOVEMBER, **Gareth Lloyd tenor**

Gary O'Shea piano

11 NOVEMBER, **Sheffield
University Chamber Choir**

18 NOVEMBER,

Indian Music Concert

25 NOVEMBER, **Wind Octets**

2 DECEMBER, **Lucy Revis cello**

9 DECEMBER, **Julian Payne**

**Prize Recital Concert –
Deborah Finch soprano**

*Admission is free and
tickets are not required.*

MUSIC IN THE WINTER GARDEN

Providing magnificent music when viewing the garden, eating your lunch, or simply just passing by.

WEDNESDAY 10, 17 & 24 NOVEMBER & WEDNESDAY 1 DECEMBER

Admission is free and tickets are not required.

All concerts start at 12.30pm and details of programmes and performers can be found on the website at the start of the season: www.sheffield.ac.uk/concerts

EVENTS IN THE COMMON ROOM

Level 5, University House,
Western bank, S10 2TN

T: 0114 222 8968 or
E: l.bates@sheffield.ac.uk for
tickets. Tickets can also be
purchased from the online shop
www.onlineshop.shef.ac.uk

KING PLEASURE AND THE BISCUIT BOYS PLUS MC AND DJ CHRIS POWERS

SATURDAY 23 OCTOBER, 8.00pm

Rough, tough and always rocking, the legendary King Pleasure and The Biscuit Boys' zany stage show is the most authentic Rhythm & Blues band ever to come from outside the USA.

Standard Tickets £15 (show only) in advance (£17 on the door); Premier Tickets £30 (including pre-performance meal at 7.15pm)



The Bootleggers

THE BOOTLEGGERS Christmas Party Night

SATURDAY 11 DECEMBER,
8.00pm (doors open 7.30pm)

Celebrate with friends at your Christmas Party. A night of stunning harmonies rivalled only by The Beach Boys. Truly an all singing, all dancing, show-stopping musical sensation.

Tickets £35 per person including pre-performance meal.



HIGHWAY CHILD Celebrate with friends at your Christmas Party

SATURDAY 18 DECEMBER,
8.00pm (doors open 7.30pm)

Highway Child are a seven piece Blues and Soul review band. Their extensive song catalogue includes hits by Stevie Wonder, Wilson Pickett, James Brown, Otis Reading, The Blues Brothers and many more.

Tickets £35 per person including pre-performance meal.

CHRISTMAS WithUS eventswithUS

T: 0114 222 8999,
E: events@sheffield.ac.uk

Function rooms available to hire for parties, private lunches and get-togethers. Call the team for further information and to check availability.

CHRISTMAS CARVERY LUNCHES

THURSDAY 16 AND FRIDAY
17 DECEMBER

£12.50, T: 0114 222 8968,
E: l.bates@sheffield.ac.uk

SHEFFIELD CHAMBER ORCHESTRA

SATURDAY 27 NOVEMBER,
7.30pm

*Firth Hall, Firth Court,
S10 2TN*

*Tickets: £10, £8
(concessions, people in
receipt of State Benefits,
students),*

*£5 - Friends of the Sheffield
Chamber Orchestra
(membership card required)
and young people under 18*

*Available at the door or from
any member of the Sheffield
Chamber Orchestra,
T: 0114 268 7024*

*Further details to
be updated at:
[www.sheffield-
chamber-orchestra.org.uk](http://www.sheffield-chamber-orchestra.org.uk)*

LIVE

Sheffield Students' Union
FFO Foundry/Fusion/Octagon
Live Gigs & Special Events

Sep.–Dec.2010

Young Guns

26 \ Sep.
[Sun]

Delays

9 \ Oct.
[Sat]

Hadouken!

23 \ Oct.
[Sat]

Ironik

8 \ Nov.
[Mon]

Marseille

26 \ Nov.
[Fri]

The Blackout

11 \ Dec.
[Sat]

Ticket Outlets

Box Office / **0114 222 8777**



sheffieldstudentsunion.com

Facebook: Sheffield Students' Union Live Gigs
[all Live Gigs open to non-students]

Drama

UNIVERSITY DRAMA STUDIO

Shearwood Road (off Glossop Road).

Drama

POOL (NO WATER) by Mark Ravenhill and Frantic Assembly (Sheffield University Theatre Company)

WEDNESDAY 20 - SATURDAY 23 OCTOBER, 7.30pm

A beautiful yet disturbing dissection of the darkest corners of human nature. When a revered artist suffers a freak accident she is left at the mercy those closest to her; the integrity of love and friendship are put on trial in this innovative physical piece.

Tickets: Wednesday £4, Thursday - Saturday £6, concessions £5 from the Union Box Office, Students' Union, Western Bank, S10 2TG. T: 0114 222 8676. E: theatre.company@shef.ac.uk www.sutco.co.uk

THE HISTORY BOYS by Alan Bennett (Sheffield University Theatre Company)

WEDNESDAY 27 - SATURDAY 30 OCTOBER, 7.30pm

Set in a 1980s Sheffield grammar school, *The History Boys* follows the plight of eight teenage boys in pursuit of sex, sport and a place at Oxbridge.

Tickets: Wednesday £4, Thursday - Saturday £6, concessions £5 from Union Box Office, Students' Union, Western Bank, S10 2TN. T: 0114 222 8676. E: theatre.company@shef.ac.uk www.sutco.co.uk

IMPROBABLE FICTION by Alan Ayckbourn (Midland Players)

WEDNESDAY 3 - SATURDAY 6 NOVEMBER, 7.30pm

Karen and Martha are headmistresses of a small boarding school for girls where an allegation about the nature of their relationship leaves more than their reputations hanging in the balance.

Tickets: £7 (£2 from each ticket donated to Yorkshire Air Ambulance), from John Stone. T: 0114 236 1186. E: tickets@midlandplayers.co.uk www.midlandplayers.co.uk

THE TRIAL by Steven Berkoff (Sheffield University Theatre Company)

WEDNESDAY 10 - SATURDAY 13 NOVEMBER, 7.30pm

Steven Berkoff's combination of physical theatre and dark comedy attempts to unravel the web of the Justice system only to find that themore you struggle, the more tangled you become.

Tickets: Wednesday £4, Thursday - Saturday £6, concessions £5, from the Union Box Office, Students' Union, Western Bank, S10 2TG. T: 0114 222 8676. E: theatre.company@shef.ac.uk www.sutco.co.uk

THE WINTER'S TALE by William Shakespeare (Sheffield University Drama Society)

WEDNESDAY 17 - SATURDAY 20 NOVEMBER, 7.30pm

Violent sexual jealousy has cost King Leontes his marriage, his children, his best friend, the respect of his subjects - everything he holds dear. But time has the power to turn sorrow to joy; to offer Leontes a last chance of happiness. Shakespeare's intense study of sin and redemption.

Tickets: £9 concessions £7 from Jill Wright. T: 0114 266 9406 www.suds.shef.ac.uk

THE TEMPEST by William Shakespeare (Sheffield University Theatre Company)

WEDNESDAY 24 - SATURDAY 27 NOVEMBER, 7.30pm

A shipwreck. A savage. Mutiny. Murder plots. Through a tale of oppression, revenge, anger, betrayal and bitterness, comes a story of love, and the human capacity to reconcile after great hardship.

Tickets: Wednesday £4, Thursday - Saturday £6, concessions £5 from the Union Box Office, Students' Union, Western Bank, S10 2TG. T: 0114 222 8676. E: theatre.company@shef.ac.uk www.sutco.co.uk

RENT by Jonathan Larson (Sheffield University Performing Arts Society)

SUNDAY 12 DECEMBER 2.30pm,
SUNDAY 12 - TUESDAY 14 DECEMBER, 7.30pm

Jonathan Larson's Pulitzer Prize winning rock opera. A stirring score captures the spirit of a generation of struggling artists, addicts, and impoverished youngsters living in the shadow of AIDS.

Tickets: £8, concessions £6. From the Union Box Office, Students' Union, Western Bank, S10 2TG T: 0114 222 8777. E: boxoffice@shef.ac.uk www.shef.ac.uk/union

ELIXIR OF LOVE by Donizetti (Sheffield City Opera)

WEDNESDAY 29 SEPTEMBER - SATURDAY 2 OCTOBER, 7.30pm

Love Italian style - wine, women, song and aphrodisiacs! Set in the 1950s, *Elixir of Love* is a highly enjoyable comic opera.

Tickets: £10, £8 & £5 (Wed/Thurs); £12 (Fri/Sat) from Laraine Turner. T: 0114 269 4958. E: tickets@sheffieldcityopera.co.uk www.sheffieldcityopera.co.uk

OUR HOUSE - THE MADNESS MUSICAL (Splinters Theatre Group)

TUESDAY 5 - SATURDAY 9 OCTOBER, 7.15pm. SATURDAY 9 OCTOBER, 2.15pm

On Joe Casey's 16th birthday, he commits a petty crime to impress his girlfriend. The police arrive and he is faced with two choices, stay or run. The songs include *Baggy Trousers*, *Wings of a Dove*, *Our House*, *It Must Be Love* and many more Madness classics.

Tickets: £10, concessions £9 (Tues & Sat Matinee) from Jill Beckett. T: 0114 276 3826 (evenings) or 07910 251584. E: splinterstheatre_group@02.co.uk

MACBETH by William Shakespeare (The Company)

WEDNESDAY 13 - SATURDAY 16 OCTOBER, 7.30pm

SLEEP NO MORE... Three witches foretell that Macbeth will be King of Scotland. Driven by ambition and encouraged by his ruthless wife, he kills King Duncan to realise the prophecy. However, as Macbeth claims the throne, he is haunted by the demons of his past and his fate is set.

Tickets: £7, concessions £5 from The Company Box Office. T: 0114 201 0090. E: boxoffice@thecompanysheffield.co.uk www.thecompanysheffield.co.uk

Lectures, Seminars & Conferences

Storying Sheffield

An innovative art and community project based in the School of English at The University of Sheffield. It is a unique venture in British higher education. Undergraduate students and people from the city with no family background in higher education are working and studying together to produce, record, and collect stories, fragments of stories, and many other diverse representations of the lives of Sheffield people, and the 'life' of Sheffield.

Read more at: www.storyingsheffield.com

WORLD MENTAL HEALTH DAY – CREATIVE ARTS OPEN EXHIBITION Organised by the Creative Arts Steering Team (Sheffield Health and Social Care NHS Trust with support from Storying Sheffield

SATURDAY 9 &
SUNDAY 10 OCTOBER

Jessop West Exhibition Space

An exhibition of many different types of art, including painting and film, created by users of mental health services in Sheffield. *Admission free.*

STORYING LIVE!

SATURDAY 16 OCTOBER,
1.00-5.00pm

Jessop West Exhibition Space

In association with Off The Shelf Literature Festival and Storying Sheffield. In this event you will be helped to create a story of your life in an afternoon. You will be able to use a variety of techniques and media of your choice to tell a story from your life (or your life story). No technical expertise is required to attend this event. The workshop will be led by members of the 'Storying Sheffield' project. For more information, and to see samples of work already produced see

www.storyingsheffield.com

*Free, but booking essential via
Brendan Stone T: 0114 222 8495,
E: b.stone@sheffield.ac.uk
Suitable for age group: 13yrs+*



Man by Paul Digby

AN ARRANGEMENT OF KNOWLEDGE: CONTEMPORARY ART PRACTICE AND MENTAL HEALTH

Paul Digby & Brendan Stone

TUESDAY 26 OCTOBER,
5.30-7.00pm

*Douglas Knoop Centre,
Humanities Research Institute*

This event will explore the relevance and purpose of art in mental health services and provision. Leeds-based artist Paul Digby will discuss his work in this field, including his projects at Rampton Special Hospital and the former High Royds psychiatric hospital in Leeds. He will consider the influence on his work of the artists Marcel Duchamp and Jean Dubuffet, and the psychiatrists R D Laing and Eric Berne. Brendan Stone from the School of English will discuss the intellectual influences

behind the University's Storying Sheffield project, and consider whether artistic engagement presents challenges to some medical approaches to mental illness.

*All are welcome. Admission Free,
but by ticket only from
b.stone@sheffield.ac.uk*

www.pauldigby.me.uk
www.storyingsheffield.com

A PERSONAL GEOGRAPHY OF INJUSTICE

Daniel Dorling, Professor
of Human Geography at the
University of Sheffield

SUNDAY 17 OCTOBER,
7.00pm

*The Showroom Cinema,
Paternoster Row, Sheffield
City Centre*

Daniel Dorling's latest book 'Injustice: Why Social Inequality Persists' has ruffled more than a few feathers. It is an examination of the underlying beliefs that allow inequality to be perpetuated.

In this public presentation, using film, music, graphs, cartoons and maps, the ideas within the book are investigated. To do this Daniel Dorling has teamed up with Carl Lee who is going to question him about his thinking and explore how this all impacts upon the lives of people in Sheffield and beyond.

*Details and booking information can
be found at www.offtheshelf.org.uk*

LETTER WRITING SEMINARS

The University of Sheffield School of English in collaboration with The British Academy.
Further details from Dr Jonathan Ellis, School of English, T: 0114 222 8465

READING OTHER PEOPLE'S MAIL: ON LIVES, LETTERS AND SECRECY

by Frances Wilson

MONDAY 18 OCTOBER, 7.00pm

*Humanities Research
Institute, Gell Street, S3*

A talk on letter writing by one of the country's most exciting new biographers. Frances Wilson is the prize-winning author of *Literary Seductions*, *The Courtesan's Revenge*, and *The Ballad of Dorothy Wordsworth*. This year she is a judge for the Man Booker Prize.

"A writer's writer who will no doubt inspire her own cult following" - Award-winning biographer Amanda Foreman

Tickets: £5/£4 (concessions)
from: *Arena Ticket Shop*,
T: 0114 256 5567

THINKING OF YOU: LETTERS AND BIOGRAPHY

by Hermione Lee

FRIDAY 22 OCTOBER, 7.00pm

*Humanities Research
Institute, Gell Street, S3*

One of the world's most well-respected biographers. Hermione Lee is the author of several acclaimed biographies and critical works, including award-winning biographies of Willa Cather, Edith Wharton and Virginia Woolf. Lee is also well-known for her reviews, most recently in *The Guardian*. Lee teaches at Oxford University, where she is President of Wolfson College. She is currently writing a biography of Penelope Fitzgerald.

Tickets: £5/£4 (cons)
from *Arena Ticket Shop*
T: 0114 256 5567

FIRE BALLOONS: THE LETTERS OF ELIZABETH BISHOP AND ROBERT LOWELL

by Paul Muldoon

TUESDAY 26 OCTOBER, 7.00pm

*St George's Church,
Mappin Street, S1*

A talk on two of America's greatest modern writers by one of the world's best contemporary poets. Paul Muldoon who in 2007 was appointed Poetry Editor of *The New Yorker*. He has been described by *The Times Literary Supplement* as "the most significant English-language poet born since the second World War."

Tickets: £7/£5 (concessions)
from *Arena Ticket Shop*
Tel: 0114 256 5567

THE 8TH ROBERTS LECTURE

ALIGNMENT, LEADERSHIP AND MANAGEMENT USING DLA PIPER AS A CASE STUDY

MONDAY, 1 NOVEMBER, 6.00pm

Firth Hall, Firth Court, Western Bank

Sir Nigel Knowles, Joint CEO and Managing Partner of DLA Piper.
Places can be booked online from Monday 11 October at:
www.shef.ac.uk/whatson/universitylectures/8throberts.html

For further information please contact Gail Street in the Events Team, E: g.street@sheffield.ac.uk, T: 0114 222 8893

A POETRY READING BY PAUL MULDOON

WEDNESDAY 27 OCTOBER, 7.00pm

*St George's Church,
Mappin Street, S1*

Tickets: £7/£5 (concessions)
from *Arena Ticket Shop*
T: 0114 256 5567

THE FIRST SIR HANS KREBS LECTURE

TACKLING CLIMATE CHANGE: RHETORIC OR REALITY?

Lord Krebs, Principal, Jesus College Oxford

WEDNESDAY 20 OCTOBER, 6.00pm

Firth Hall, Firth Court, Western Bank

Scientific experts and politicians agree that tackling climate change is a major and urgent challenge. The UK Climate Change Act 2008 set out how the country will respond to this challenge. Talking about it is one thing, doing it is another. Is there the political will and public support for making the radical changes that are needed?

Read more and book a place at: www.shef.ac.uk/whatson/universitylectures/krebslecture2010.html

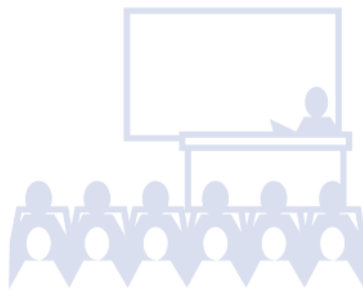
SCHOOL OF HEALTH AND RELATED RESEARCH (SCHARR) INAUGURAL LECTURES

All 5.15-6.00pm, followed by a wine reception.

Pemberton Lecture Theatre, Second Floor, Regent Court, S1 4DA

Places are free, but please advise of attendance in advance.

E: s.p.holmes@sheffield.ac.uk, T: 0114 222 0741



Associate Professor Mike Kelly



PUBLIC HEALTH, POLITICS, POLICY AND THE MEDIA

Associate Professor Mike Kelly, Director, Centre for Public Health Excellence, National Centre for Health and Clinical Excellence (NICE)

WEDNESDAY 27 OCTOBER

The lecture will consider the relationship between evidence and policy and evidence and public health practice. The implications for public health practice and public health research will be described.

Professor Liddy Goyder



EVIDENCE-BASED PUBLIC HEALTH IN AN UNCERTAIN WORLD

Professor Liddy Goyder

WEDNESDAY 24 NOVEMBER

There is a lot of uncertainty about current threats to public health, such as climate change and new infectious or environmental hazards. Yet public information and communication about public health risks tends to emphasise "known facts" and often glosses over the uncertainties. How can lessons from previous public health challenges, and from other disciplines, help us to face up to uncertainty and find positive ways to manage it better?

Professor Alicia O'Cathain



EVALUATING HEALTH SERVICES, WARTS AND ALL

Professor Alicia O'Cathain

WEDNESDAY, 19 JANUARY 2011

Professor O'Cathain will look back on her 25 years of experience in health services research, reflecting on how research methods have evolved as research questions have become more sophisticated.

58th HATFIELD MEMORIAL LECTURE

STEEL – THE WINNING EDGE

Professor Peter Brown, Materials & Structures Capability Leader, MOD's Defence Science and Technology Laboratory (DSTL)

TUESDAY 7 DECEMBER, 6.45pm

Octagon Centre, Western Bank, Sheffield.

Steel, although it has given up some of its secrets, is in many respects still an emerging technology as many more treasures remain to be discovered, a few of which, barring unforeseen circumstances, will be presented for the first time at this year's Hatfield lecture.

Entrance is free but by ticket only register at:

www.hatfield-memorial-lecture.group.shef.ac.uk

Further information and an abstract can also be found here, or contact Dr Russell Goodall, Department of Materials Science and Engineering, r.goodall@sheffield.ac.uk

URSULA PROJECT SEMINARS

URSULA - Urban Rivers Corridors and Sustainable Living Agendas

A monthly programme of seminars has been organised for all those interested in cities, river corridors and development. Each seminar will be based around an outside speaker of some renown.

For further information contact Jenny Chambers

T: 0114 222 5725,

E: j.a.chambers@shef.ac.uk

www.ursula.group.shef.ac.uk

WEDNESDAY 13 OCTOBER

Sue Illman, Illman Young Landscape Design

Venue: to be confirmed

WEDNESDAY 15 DECEMBER

Speaker to be confirmed

WEDNESDAY 12 JANUARY

Gerard Hawley

Gerard Hawley, Penny Anderson Associates, will present the Mersey Life Project, which aims to realise the ecological and socio-economic potential of the rivers of the Mersey Basin through a phased programme of river restoration projects.

WEDNESDAY 16 FEBRUARY

A FRAMEWORK FOR GEODESIGN AND SEVERAL WAYS OF DESIGNING

Carl Steinitz, Graduate School of Design, Harvard University.

SHEFFIELD – A WORLD HISTORY

Department of History in partnership with Museums Sheffield.

Western Park Museum

T: 0114 278 2600

www.museums-sheffield.org.uk

STREETS IN THE SKY: PARK HILL AND URBAN UTOPIA

WEDNESDAY 10 NOVEMBER, 1.00-2.00pm

Find out how the 'ugliest building in Europe' could have once been the symbol of a brighter future. And what does its fate tell us about the city of tomorrow?

Entry Free – no need to book

HOLY HELMET: THE CONVERSION OF THE ENGLISH AND THE BENTY GRANGE HELMET

Charles West, Lecturer in Medieval History, University of Sheffield

WEDNESDAY 8 DECEMBER, 1.00-2.00pm

What does Sheffield's greatest Dark Age relic tell us about a pivotal event in world history, Europe's conversion to Christianity, and its affect on our region.

Entry Free – no need to book

THE FINAL LECTURE IN THE CAMBRIAN SOCIETY CENTENARY SERIES

THE FUTURE OF THE UNITED KINGDOM, A PERSONAL PERSPECTIVE

by David Blunkett MP

WEDNESDAY 27 OCTOBER, 6.30pm

Firth Hall, Firth Court, Western Bank, S10 2TN

Entrance free of charge but by ticket only. There will be an optional drinks reception immediately after the lecture at a charge of £3 per head. Tickets for the reception will be issued separately. Further information and a booking form will be made available from Wednesday 6 October at:

www.sheffield.ac.uk/whatson/universitylectures/cambriansociety.html

Open Days, Exhibitions & Fairs

SHEFFIELD UNIVERSITY FINE ART SOCIETY

Turner Glass Museum, Sir Robert
Hadfield Building, S1 3JD
E. sufas@sheffield.ac.uk

PRINTS AND ETCHINGS BY SHEFFIELD PRINTMAKER PETER YORK

TUESDAY 12 OCTOBER -
29 OCTOBER

EXHIBITION OF WORK BY MEMBERS OF THE FINE ART SOCIETY

23 NOVEMBER - 10 DECEMBER



Sacre Coeur Gargoyle by Peter York



Gordale Scar by Peter York

CAREERS FAIRS

Jointly organised with Sheffield Hallam University and part
of the Yorkshire Autumn Graduate Recruitment Season.

Free entry

Students and graduates from all institutions are welcome.

CAREERS THAT MAKE A DIFFERENCE ONLINE FAIR

MONDAY 18 OCTOBER -
FRIDAY 12 NOVEMBER 2010

Looking for a career where you
can make a real difference to
people's lives? Then take a look
at our online fair

Online 24 hours a day:
www.sheffieldcareersfairs.ac.uk

BUSINESS & FINANCE FAIR

TUESDAY 2 NOVEMBER,
10.30am-4.00pm

*The Octagon Centre,
Western Bank, S10 2TN*

ENGINEERING, SCIENCE & IT FAIR

WEDNESDAY 3 NOVEMBER,
10.30am - 4.00pm

*The Octagon Centre, Western
Bank, S10 2TN*

TRADITIONAL HERITAGE MUSEUM

SATURDAYS 30 OCTOBER, 27 NOVEMBER
27 & 29 JANUARY, 10.30am – 4.30pm

Christmas Fair, 20 NOVEMBER, 10.00am - 4.00pm
605 Ecclesall Road, S11 8PR

The Traditional Heritage Museum houses a fascinating and unique
collection of material primarily from the period 1850-1950. For
members of the general public, both adults and children, the
Museum offers a kaleidoscope of varied objects and exhibits –
something to interest everyone.

No need to pre-book.

EXECUTIVE MBA OPEN EVENING

THURSDAY 11 NOVEMBER, 6.30 - 8.00pm

ICOSS, 219 Portobello

An opportunity to hear about the content of the programme
and to talk to some of our current and former students and staff.
We also have information about scholarships and funding available.

There is no fee and you can book online at
www.emba.group.shef.ac.uk/contact/open-evenings
T: 0114 222 2181 E: mba@sheffield.ac.uk

MISCELLANEOUS

FILM UNIT -

STUDENTS' UNION CINEMA

Wednesday, Friday, Saturday
and Sunday, 7.30 pm

*University of Sheffield
Students' Union
Auditorium/Cinema*

Showing this term, some amazing blockbuster films including: Iron Man 2, Eclipse, Inception, Four Lions, Kick Ass, Salt, A-Team, Green Zone and Toy Story 3, as well as some great international movies like White Ribbon, Vincere, [Rec 2], Girl who played with Fire, Dogtooth, and not to mention all the old classics such as Terminator, Schindler's List, Alien, Die Hard, Big Lebowski and Hitchcock's Psycho... something to satisfy every film lover!

Tickets all £2.20

*University of Sheffield
Students' Union Box Office
T: 0114 222 8777*

GOLF TOURNAMENT IN AID OF SHEFFIELD KIDNEY RESEARCH FOUNDATION

SUNDAY 10 &

MONDAY 11 OCTOBER

*De Vere at Oulton Hall
(5 Star Hotel), Leeds*

Package includes 2 rounds of golf, overnight accommodation, breakfast, goody bag and golf top.

Fantastic prizes and competitions for teams and individuals!!

£129 per person (two people sharing). For more information and to book please contact Gerry New, T: 0114 271 5541, E: billy.kidney@sheffield.ac.uk

CAPOEIRA SOCIETY

Cordao de Ouro

Weekly classes

2, 9, 16, 23 OCTOBER;
6, 13, 20, 27 NOVEMBER
& 4, 11 DECEMBER

2.00-3.30pm

Goodwin Sports Centre

Capoeira is a dance martial art that originates in Brazil. It fuses acrobatics, dance movements and martial arts techniques. Music, community and fun is a big part of capoeira. Cordao de Ouro is an internationally recognised capoeira group and is also the group of the Sheffield University Capoeira society. If you are feeling fit, or even if you just want to come and watch then come and join the first class of the year at Goodwin Sports Centre. It is open to students from both universities, members of the public and even kids. Complete beginners are always welcome, come and join the fun!

Pay on arrival. £4 Students and children, £5 members of the public (children must be accompanied by an adult). For further information contact Chris Boyer, chrisboyer@hotmail.co.uk E: cdoshef@hotmail.co.uk, T: 07843 444 248

CAPOEIRA SOCIETY PARTY

and charity fundraiser –

Joga Brasil

SUNDAY 10 OCTOBER

7.30pm

Cubanas, Trippet lane

Cordao de Ouro Sheffield have teamed up with Cubanas for one special night to celebrate all things Brazilian and raise money for charity...JOGA BRASIL!! Expect a large serving of Samba rhythms, swift footwork and energia, energia energia!! Live percussion, Capoeira performance from Cordao de Ouro Sheffield, Live samba from Sheffield University Samba Bateria, DJ Melstar

Bring your friends, bring your energy and see you there!!

£3 entry Student, £5 Non-student. All proceeds will go to disadvantaged street children in Brazil.

CRECHE TIO JOAO, Rocinha Favela, Rio de Janeiro, www.iloverocinha.org.br

Procedure for booking University Facilities



The University Of Sheffield.

Drama Studio

Contact: Theatre Manager,
Shearwood Road,
tel: 0114 222 0200

Conference Office

For fully inclusive events packages and guidance throughout the booking process. Please contact the Conference Office, tel: 0114 222 8822 email: conferences@sheffield.ac.uk

University meetings rooms

Contact: Corporate Services,
tel: 0114 222 9060

Support the arts through the Alumni Foundation

The Alumni Foundation channels donations from alumni and friends of the University to the most deserving recipients across campus. It makes a large number of small grants to a range of projects that add life to the University, and encourages student involvement in areas such as drama, music, sport, art and culture.

The Alumni Foundation can only distribute as much money as it receives in donations. It is completely reliant upon the generosity of donors. We are very grateful for their support.

To support the work of the Alumni Foundation, please make a donation to the Alumni Fund. You can find out more by visiting www.sheffield.ac.uk/alumni or contact Ruth Stanley on 0114 222 1075, email r.e.stanley@sheffield.ac.uk

Sports facilities

Contact: USport,
Goodwin Sports Centre,
tel: 0114 222 6999

Library

Those people wishing to consult materials from the Library's collections should telephone 0114 222 7204.

Open to all gives details of events organised by The University of Sheffield that are open to members of the public. Details of how to obtain tickets, together with a contact name and number, are given when necessary.

Every effort has been made to ensure the accuracy of the information given in this leaflet, but the University can accept no responsibility for any errors or omissions.

The text of this leaflet can be supplied in larger print formats if needed. Please contact Jeanette Peat, tel: 0114 222 1030, email: j.peat@sheffield.ac.uk

