



The
University
Of
Sheffield.

Events
For
The
Public.

WHAT'S ON

Highlights for February – May 2020

www.sheffield.ac.uk/whatson

 @SheffUniWhatsOn



Photo credit Alex Moldovan



Photo credit John Anderson





FameLab: Regional Final

The international science communication competition is back for 2020

Thursday 26 March

Tamper Seller's Wheel, 149 Arundel Street, S1 2NU

Open to all – registration: <https://famelab-2020.eventbrite.co.uk>

The University is hosting the regional final this year for the first time! FameLab is a communications competition designed to engage and entertain by breaking down science, technology and engineering concepts into three-minute presentations. Contestants from around the world take part armed only with their wits and a few props - the result is an unpredictable, enlightening and exciting way to encourage your curiosity and find out about the latest research.

Come and watch the region's scientists compete in a battle to inform, inspire and entertain.

We are delighted to announce that Simon Watt - writer, science-communicator and TV presenter - will be competing this year's event.



Pint of Science

Come along, have a drink, learn about science and have some fun!

Monday 11-Wednesday 13 May

Various locations, £4 per event. To see the full Sheffield programme and buy tickets visit: pintofscience.co.uk/events/Sheffield

Researchers from the University of Sheffield will be talking about their research and answering your questions, in a pub near you. The talks will be accompanied by hands-on activities, demonstrations and a chance to win prizes.



Festival of debate

2020

Tuesday 14 April - Saturday 30 May

Various locations www.festivalofdebate.com

The Festival of Debate returns in 2020 with an exciting programme of panel discussions, debates, Q&As, artistic responses and keynote speeches. The festival is hosted by the not-for-profit organisation Opus Independents and aims to create a meaningful dialogue around key social, political and economic issues.

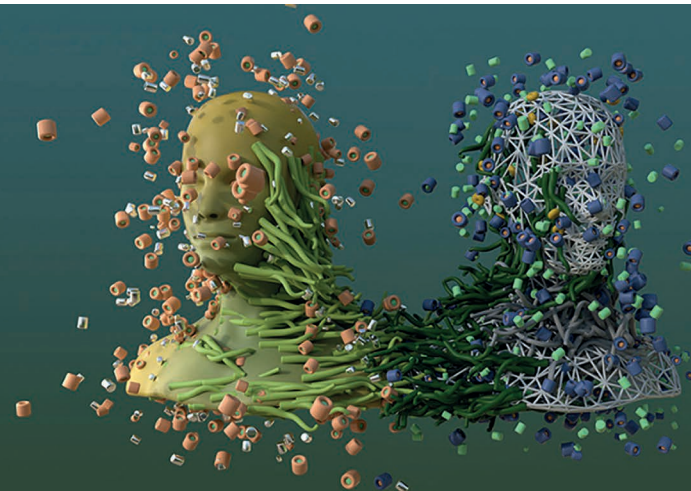


International Clinical Trials Day

Wednesday 20 May

International Clinical Trials Day is celebrated around the world on or near 20 May each year to commemorate the day in 1747 when James Lind started the first clinical trial on the deadly disease scurvy. To join in the celebrations, the University of Sheffield is hosting a free, public event all about medical research.

Further details will be made available nearer the time at: www.sheffield.ac.uk/ictd



Back this September!

Festival of the Mind 2020

The next Festival of the Mind will take place 17-27 September 2020. Once again we're teaming up with Sheffield's creative and digital community for a celebration of ideas, culture and collaboration.

Further information nearer the time: <http://festivalofthemind.group.shef.ac.uk>

Festival of the Mind is a biennial celebration of our University's world-class research, showcasing collaborative projects produced by academics from the University and artistic talent from Sheffield's creative industries. Over eleven days our most exciting and cutting-edge research is shared with the public through innovative, imaginative and impactful events, performances, installations and exhibitions in venues across the city, including the wonderful Spiegeltent.

UNIVERSITY OF SHEFFIELD concerts

Details and booking for these and much, much more at: www.sheffield.ac.uk/concerts
 Box Office: Ticket Source, T: 0333 666 3366, Enquiries, T: 0114 222 0468

The University of Sheffield Concerts programme has something to astonish and delight music lovers of all tastes. Our programme spans world and folk music from acclaimed musicians to a 360° sound-system playing music in darkness and a concert responding to a treasured book accompanied by live painting on stage.

Upcoming highlights:

March: Kabantu



Photo credit Alex Moldovan

Using strings, guitar, vocals and percussion this quartet creates new marriages of music from around the globe, celebrating the space where different cultures meet. Vocal harmonies from South Africa coalesce with everything from Celtic reels to Brazilian samba and beyond...

April: Sound Junction II

The University of Sheffield Sound Studios present another incredible weekend of electroacoustic electronic music performed in a unique setting of near darkness and through a 32 speaker, 360° sound-system. Electroacoustic music combines everyday recordings, high-tech production and electronic sounds - creating pieces of music that range from thrilling, sensory overloads to nuanced, gentle textures.

April: Lost Words: Spell Songs

Eight remarkable musicians, whose music already engages deeply with landscape and nature, respond to the creatures, art and language of **The Lost Words**, the bestselling book by author Robert Macfarlane. Artist Jackie Morris will paint live on stage and her work will be displayed on a screen so you can watch as her painting unfolds.

May: Will Pound's A Day Will Come



Photo credit Adrian Burrows

Acclaimed harmonica and melodeon player Will Pound takes a musical journey across the states of the European Union to discover and unveil the diversity and common ground of traditional music and song.



International Cultural Evening 2020

Saturday 14 March, (doors 7pm, event starts at 7.30pm)
 Sheffield City Hall, S1 2JA. Tickets: Advance £6 (NUS)
 £7 (General). Door £7 (NUS), £8 (General)

Tickets: <https://tickets.sheffieldstudentsunion.com/ents/event/14638>
 Event Facebook page: www.facebook.com/events/574750713081180

Enquiries, E: su-events@sheffield.ac.uk / isc@sheffield.ac.uk

Spread the love, share the moments and join the experience with **#ICE2020 #52YearsWithISC #WeAreInternational!**

The International Cultural Evening is an annual night of cultural performances, and this year we are celebrating its 48th year running! Experience several short performances by international student groups from all over the world displaying their rich and vibrant cultures.

ICE has evolved into a high profile event providing students the opportunity to openly showcase and celebrate their culture. This year is set to be an unmissable evening, demonstrating diverse cultures through dance, music and plays to keep you entertained throughout the night!

As with every year, we actively encourage everyone to attend in their national/cultural dress.



International Students' Committee

World Food Festival - Taste the world, one bite at a time

Sunday 16 February, 1pm, Uni Central, Students' Union, S10 2TG

Admission free. Food prices will range from £1-4

Enquiries, E: isc@sheffield.ac.uk @sheffisc

www.facebook.com/events/2149440915158209

A celebration of culture through street food! With over six participating national societies from all around the world, the Festival gives you the chance to experience more food and culture than ever before.

We'll be having stalls serving different foods, drinks and desserts from all around the world. The festival is a fun day for all ages, including performances and entertainment throughout! halal, vegan and vegetarian options will also be available.

Come along and enjoy as we share our cultures through some truly delicious food!



PUBLIC LECTURES

See more events at: www.sheffield.ac.uk/whatson/lectures

The Annual Krebs Lecture



Harnessing evolution to create new medicines by Sir Greg Winter, FRS

Wednesday 26 February, 6pm

Lecture Theatre 1, The Diamond, 32 Leavygreave Road, S3 7RD
 Admission free. Enquiries E: eventsteam@sheffield.ac.uk

Booking: www.sheffield.ac.uk/whatson/annualekbslecture

Sir Greg Winter FRS, is a molecular biologist best known for his work on protein engineering and developing technologies to make therapeutic monoclonal antibodies (mAbs). In recent years the application of genetic engineering technologies and/or laboratory-based evolution have led to the development of antibodies as a new class of pharmaceutical drugs, particularly for treatment of auto-immune inflammatory conditions such as rheumatoid arthritis and cancer.

Inaugural lecture by Elizabeth Milne



Sensory issues and variability in the autism spectrum

Friday 28 February, 5.30pm

Firth Hall, Firth Court, Western Bank, S10 2TN
 The lecture will be followed by a wine reception. Admission free
 Booking: <https://bit.ly/2NgmQmC>

An important consideration in Professor Milne's work is variability within the autism spectrum: autism is expressed and experienced differently by different people.

During this lecture, Professor Milne will reflect on the work she has carried out to date investigating sensory issues and heterogeneity in autism, and acknowledge the vital role that many mentors, colleagues, students and experts-by-experience have played in shaping her understanding of the condition.

IOP

Institute of Physics

Public lectures

Department of Physics and Astronomy and The Institute of Physics Yorkshire and the North East Branch

All lectures start at 5pm, with tea and coffee served from 4.20pm in the Hicks Building, Hounsfield Road, S3 7RH. All free of charge, no tickets required - just turn up! (but double check the website before making your journey in case of any changes).
www.sheffield.ac.uk/physics/news/iop-lectures

Tuesday 18 February, 5pm (room TBC)

Happy Birthday Hubble by Dr Stephen Wilkins, University of Sussex

Tuesday 10 March, 5pm, Lecture Theatre A, Hicks Building

Look but don't touch! Spectroscopic analysis of medieval ink pigments by Kate Nicholson, University of Northumbria

Tuesday 5 May, 5pm, Lecture Theatre A, Hicks Building

Trinity - The treachery and pursuit of the most dangerous spy in history by Frank Close OBE, Oxford University

DISCOVER

Department for Lifelong Learning

The Discover Course

February, April and May

These courses will each run for one morning per week for 5-6 weeks.

Further information: www.sheffield.ac.uk/dll/discover

Enquiries, E: dloutreach@sheffield.ac.uk, T: 0114 222 7000 @shefunidll



Discover is an award-winning short course, designed to inspire adults who haven't been to university to progress with their learning. It focuses on themes that link to the subjects offered by the Department for Lifelong Learning.

Delivered in partnership with local museums, the course is designed to build your confidence if you have been out of formal learning for two or more years. The course gives a real flavour of the University experience, giving you a chance to take part in a range of small group activities and discussions. It also provides vital information, advice and guidance such as how to apply to university and how to finance your studies.

Western Bank Library Exhibition

Exhibition Gallery, Western Bank Library, S10 2TN

Monday 17 February - Friday 12 June

Looking Beyond: different perspectives in travelling entertainment photography

Further information, including opening times, at:
www.sheffield.ac.uk/library/exhibition

An exhibition of photographs from the National Fairground and Circus Archive collections featuring the work of Professor Brendan Walker, Dick Scott-Stewart, John Anderson and Bob Chase. This exhibition looks at aspects of photography in popular entertainment: the fairground as a hub for the development and consumption of photography, three professional photographers' insight into the world of popular entertainment and the use of photography and science to capture the experience of the thrill of fairground rides.



Photo credit John Anderson



keep up-to-date at: www.sheffield.ac.uk/whatson

CommLaw Legal Clinic

School of Law, Bartolomé Lodge
Winter Street, S3 7ND

Free legal advice on a range of commercial issues. Come along to a drop-in session at Bartolomé Lodge.

- **Website terms and conditions**
- **Business structures**
- **Product labelling regulations**
- **Disclaimers**
- **Contractual issues**

For timings see:

www.sheffield.ac.uk/law/undergraduate/probono/commLaw-legal-clinic

or E: commLaw@sheffield.ac.uk

for an appointment.

Modern
Languages
Teaching
Centre

Language Courses

Further information, enquiries and booking:

E: mltc@sheffield.ac.uk

T: 0114 222 4897

www.sheffield.ac.uk/mltc/lfa

The MLTC offers beginner to advanced level courses to students, staff, and members of the public in Arabic, French, German, Italian, Latin, Polish, Portuguese, and Spanish. Classes for Spring 2019/20 begin week commencing 10 February 2020 in various venues. Fee waivers may be available (subject to eligibility criteria).

GIVE TO THE UNIVERSITY OF SHEFFIELD

Donations from friends of the University have an incredible impact. Your gift could transform the life of a low-income student or help our world-leading researchers in the fight against disease. Give today at: www.sheffield.ac.uk/alumni/donate

COMING TO AN EVENT?

For maps, travel advice and information on venues go to: www.sheffield.ac.uk/whatson/comingtoanevent

University Parking

Secure convenient parking is available at QPark on Durham Road. Park for as little as £5 all day at the weekend and pre-book to take advantage of evening rates of £3.



For further information and to pre-book visit www.q-park.co.uk/parking/sheffield/q-park-durham-road

This leaflet provides details of events organised by The University of Sheffield that are open to the public. Further information and/or details of how to obtain tickets (if applicable) will be given in the appropriate section of the What's On web pages: www.sheffield.ac.uk/whatson

Every effort has been made to ensure the accuracy of the information given in the leaflet, but the University can accept no responsibility for any errors or omissions.



If you no longer wish to receive a copy of this leaflet by post, please let us know via E: whatson@sheffield.ac.uk or T: 0114 222 1030.

We also publish email bulletins, which will be sent a maximum of twice per month. Subscribe at: www.sheffield.ac.uk/whatson/maillinglist

@SheffUniWhatsOn

New events are added daily to the What's On pages, where you can also download a copy of this leaflet.