

The PRIEST COVID-19 clinical severity score

The PRIEST COVID-19 clinical severity score is essentially:

The NEWS2 score

+ 2 points for age 50-65, 3 points for age 66-80, 4 points for age ≥ 80

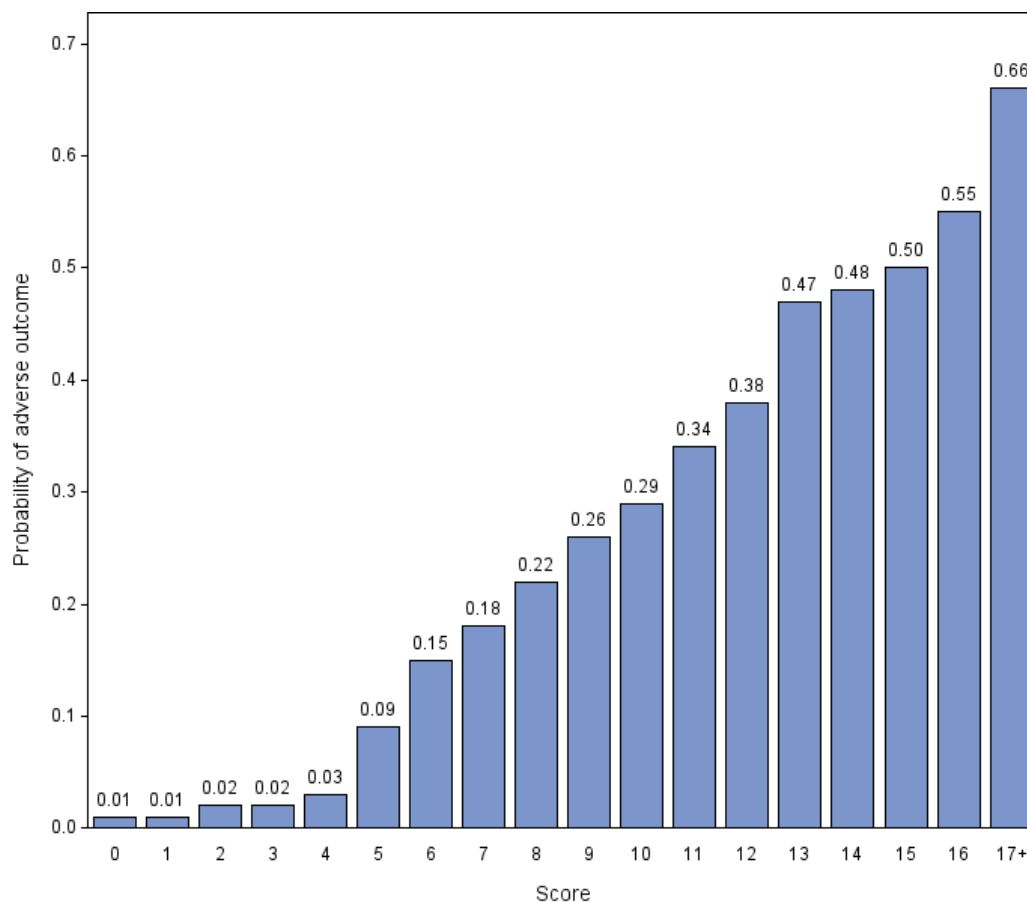
+ 1 point for male sex

+ 1 point for each level of performance status below unrestricted normal activity.

The table below shows the detailed score.

Variable	Range	Score
Respiratory rate (per minute)	12-20	0
	9-11	1
	21-24	2
	<9 or >24	3
Oxygen saturation (%)	>95	0
	94-95	1
	92-93	2
	<92	3
Heart rate (per minute)	51-90	0
	41-50 or 91-110	1
	111-130	2
	<41 or >130	3
Systolic BP (mmHg)	111-219	0
	101-110	1
	91-100	2
	<91 or >219	3
Temperature (°C)	36.1-38.0	0
	35.1-36.0 or 38.1-39.0	1
	>39.0	2
	<35.1	3
Alertness	Alert	0
	Confused or not alert	3
Inspired oxygen	Air	0
	Supplemental oxygen	2
Sex	Female	0
	Male	1
Age (years)	16-49	0
	50-65	2
	66-80	3
	>80	4
Performance status	Unrestricted normal activity	0
	Limited strenuous activity, can do light activity	1
	Limited activity, can self-care	2
	Limited self-care	3
	Bed/chair bound, no self-care	4

The figure below shows the probability of adverse outcome at each level of the PRIEST COVID-19 clinical severity score. People with a score of four or less have a relatively low risk of adverse outcome.



The table below shows the sensitivity and specificity of the score at different thresholds. A threshold score of greater than four has good sensitivity for predicting adverse outcome and sufficient specificity to identify a proportion of people who may be suitable for discharge home.

Threshold	Sensitivity	Specificity
>0	100%	4%
>1	100%	10%
>2	99%	17%
>3	99%	26%
>4	98%	34%
>5	95%	43%
>6	91%	51%
>7	86%	58%
>8	80%	65%
>9	73%	71%
>10	65%	77%