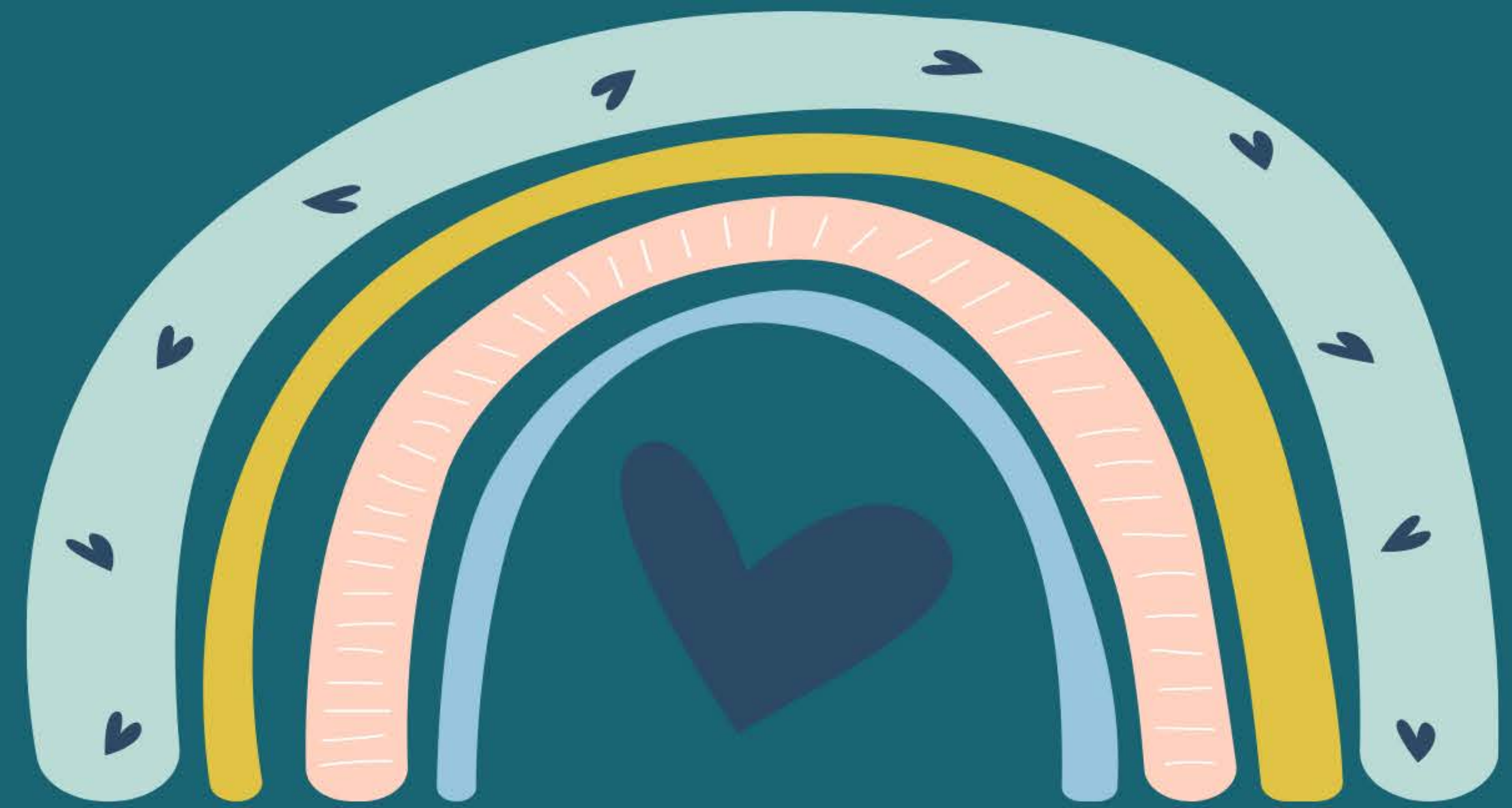


MAKING TRIALS INCLUSIVE



Always consider under-served groups; **socioeconomic disadvantage** is linked to **health inequalities**; involve appropriate patient and public involvement (PPI)



Choose sites from **diverse areas**



Use a **variety of methods** of recruitment, delivery of intervention and follow-up, each method will exclude a different group of people



Patient information should use **simple language**, and use **videos** to explain aspects of the trial and the intervention. Use **layered information** to introduce research and the trial.



Employ **diverse staff** and train staff in **cultural awareness and communication**; use interpreters or provide **extra support** for participants



Be **flexible** with times for intervention delivery, clinic visits and follow-up visits



Consider **subgroup analysis** by under-served group, but be careful with interpretation



Substudies should also be **representative** of under-served groups; under-served groups should be considered in process evaluations



Use **videos** and **short communications** when communicating results to the public, **translate results**, and **involve diverse PPI** in dissemination plans



Monitoring recruitment and retention by group throughout the trial should be considered alongside issues around data collection and data protection

