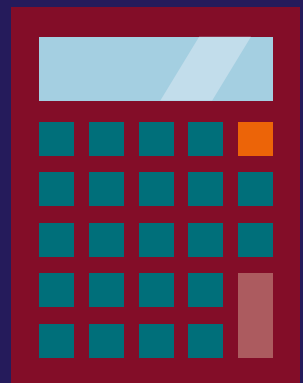
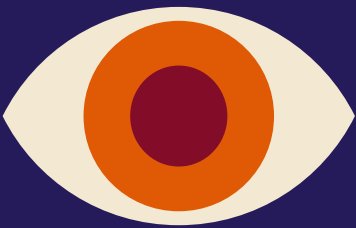
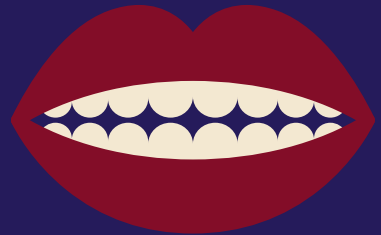




The
University
Of
Sheffield.



The Discover Programme





The Discover Programme

Making your decision about what to do after school or college will involve some big choices. One of the biggest questions you need to answer is going to be if university is right for you. That's why we have created the Discover Programme – to give you the University of Sheffield experience and the knowledge to help you make the best decision for you.

www.sheffield.ac.uk/outreach/post16



What is Discover?

The Discover Programme has been tailor made to give you the experience of what it is like to be a student at the University of Sheffield. We have split the programme into five subject and career pathways so you can apply to the one that sounds the most exciting, most interesting, or if you just want to try something new.

No matter which pathway you choose there are key features that you'll benefit from, such as:

- A launch and celebration event for you and your parents or carers
- Meeting new people
- Developing your team working skills
- Subject and career days on campus
- Student finance and UCAS advice
- Online support including 1-2-1 tutoring for A Level revision
- Residential summer school
- An alternative offer of up to two grades below the standard offer for your chosen course if you apply to the University of Sheffield (Dentistry and Medicine applicants must have completed Discover Dental Professions or Discover Medicine)



Our Pathways

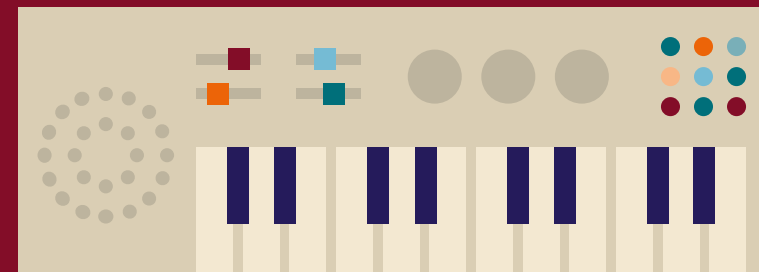
Each pathway has its own custom activities related to the respective subject area and is delivered and supported by our academics and students.

For the full information on each pathway visit:
www.sheffield.ac.uk/outreach/post16



Discover Arts & Humanities and Social Sciences

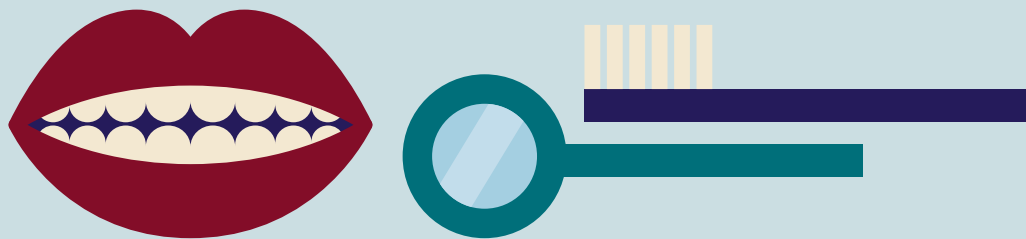
Discover Arts & Humanities and Social Sciences covers a wide range of subjects from Languages, History and English to Geography and Sociological Studies plus many more. Throughout the course you will have the chance to experience taster days and visits from a broad range of subjects, letting you explore your interests and try new things along the way.





Discover Dental Professions

Discover Dental Professions gives you an insight into what a career in a dental profession would be like. During your time on the pathway you will get an in depth look into dentistry and related careers through hands on activities, including a Careers Conference, Taste of Dentistry Day and interview techniques.



Discover Law

Discover Law will give you an insight into what studying a law degree at Sheffield is like and will give you the opportunity to learn about the different careers that a law degree can lead to. You will have the opportunity to take part in debates, mock trials, court visits and work experience placements.





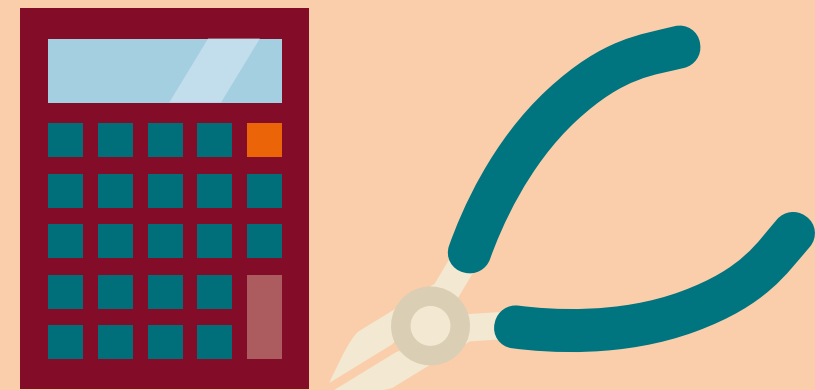
Discover Medicine

Discover Medicine offers hands on activities to prepare you for an application to study medicine. The pathway offers you the insight into what studying medicine at Sheffield is like, by taking part in Integrated Learning Activities (ILAs), a careers conference, a first aid day and a first year medical school lecture. We will also give you support and guidance with the application process to study medicine such as UCAT support and interview preparation.



Discover STEM

Discover STEM will allow you to find out about the different STEM degree options here at Sheffield through practical workshops and laboratory taster sessions in our state of the art facilities. In addition you will attend sample lectures, take part in ethical debates and explore how the world of science meets engineering. You will also get to visit the Advanced Manufacturing Research Centre AMRC to look at apprenticeship degrees.





Supporting you

We're only an email or a phone call away should you have any questions or concerns along your Discover journey. During your visits to the University you will be able to ask current students questions about university life and their experiences of Sheffield.

Throughout the year our dedicated teams in Student Support and Guidance, and Disability and Dyslexia Services work alongside our central widening participation team to identify how we can best support you. This also continues throughout your degree at the University.

Additionally we will offer you access to a free online tutoring platform which provides 1-2-1 tutoring with current students. Supporting A level revision in English Language, English Literature, History, Geography, Chemistry, Physics, Biology and Maths.

Access Sheffield

When you have successfully completed your pathway you will become eligible for an alternative offer equivalent to up to two A Level grades below the standard entry requirements for your course (providing you have met or can meet all the other requirements, for example any subject requirement, GCSE requirements, pre-entry tests and portfolio requirements). To have completed the programme you must be deemed to have committed to the programme through satisfactory attendance, behaviour and attitude.

You don't need to do anything, our academic selectors will already be aware that you've participated on the programme.

This alternative offer will be subject to a commitment from you too. To benefit from the alternative offer when exam results are released, you'll need to have made Sheffield your Firm choice with UCAS.

Please note that only Discover Medicine and Discover Dental Professions participants are eligible for alternative offers for our MBChB Medicine (A100) and BDS Dental Surgery (A200) courses, respectively.

www.sheffield.ac.uk/undergraduate/apply/access

How to apply

To find out more information about each pathway and if you meet our entry criteria visit:

www.sheffield.ac.uk/outreach/post16

Your school or college will have an allocated lead who can give you a link to our application site. Once you've submitted your application, the lead will verify your application ready for assessment.

discoverprogramme@sheffield.ac.uk

