

# TSD 26: EXPERT ELICITATION FOR LONG-TERM SURVIVAL OUTCOMES

## HOW



**Bespoke protocol** integrating survival and hazard judgements

**Evidence dossier** summarising relevant information to support the experts when making judgements

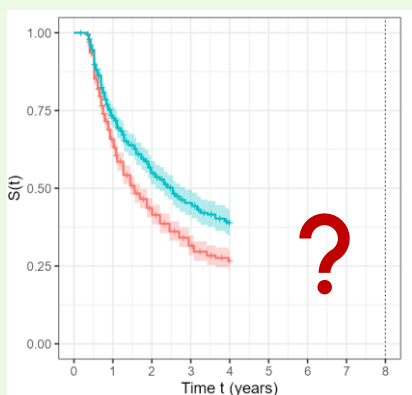


**Training** of experts in making probability judgements; survivor and hazard functions; practice elicitation exercise

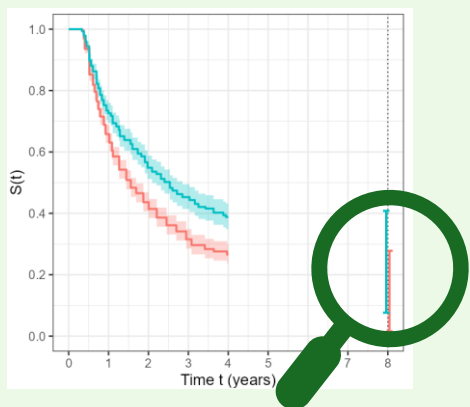
**Panel** of experts, individual elicitation; qualitative and quantitative assessments; scenario testing; aggregation



**Reporting** for full transparency, including the expert recruitment process; hazard discussion; individual and aggregated judgements



## Structured Expert Elicitation



## OUTPUTS

- **Probability distribution** quantifying expert uncertainty
- **Qualitative opinion** about how the hazard may change

## Example protocol adapted from Sheffield Elicitation Framework (SHELF)

