



Global Opportunities & Exchanges.

English Language Requirements Fact sheet - Study Abroad Programme Academic Year 2020/21

Requirements

The minimum level of English to apply for a place on the Study Abroad Programme is IELTS 6.0 with 5.5 in each component (reading, writing, listening and speaking).

However, each academic department sets its own individual English Language level and most of these are higher than the minimum above. Please see the table below for the scores for every department you can study in.

You must meet the score for **each** department you wish to study in; there are no exceptions.

Qualifications

We accept a variety of English Language Qualifications at Sheffield. [List of acceptable English Language Tests](#)

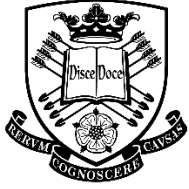
Validity of qualifications

The UK Visas and Immigration (UKVI), has set a 2-year time limit on the validity of some language tests. Please refer to the list above and if your certificate is going to expire before you arrive in Sheffield, you will need to re-sit a test and send the new certificate to Sheffield before you arrive.

Departmental English Language Requirements (A to Z by Department)

Department	TOEFL Requirement	IELTS Requirement
Animal and Plant Sciences	88 (minimum 19 in Listening, 19 in Writing, 20 in Reading, 22 in Speaking)	IELTS 6.5 (minimum 6.0 in each component)
Archaeology	88 (minimum 19 in Listening, 19 in Writing, 20 in Reading, 22 in Speaking)	IELTS 6.5 (minimum 6.0 in each component)
Architecture	88 (minimum 19 in Listening, 19 in Writing, 20 in Reading, 22 in Speaking)	IELTS 6.5 (minimum 6.0 in each component)
Automatic Control and Systems Engineering	80 (minimum 17 in Listening, 17 in Writing, 18 in Reading, 20 in Speaking)	IELTS 6.0 (minimum 5.5 in each component)
Biomedical Science	95 (minimum 19 in Listening, 19 in Writing, 20 in Reading, 22 in Speaking)	IELTS 7.0 (minimum 6.0 in each component)
Chemical and Biological Engineering	80 (minimum 17 in Listening, 17 in Writing, 18 in Reading, 20 in Speaking)	IELTS 6.0 (minimum 5.5 in each component)
Chemistry	88 (minimum 19 in Listening, 19 in Writing, 20 in Reading, 22 in Speaking)	IELTS 6.5 (minimum 6.0 in each component)
Civil and Structural Engineering	88 (minimum 19 in Listening, 19 in Writing, 20 in Reading, 22 in Speaking)	IELTS 6.5 (minimum 6.0 in each component)
Computer Science	88 (minimum 19 in Listening, 19 in Writing, 20 in Reading, 22 in Speaking)	IELTS 6.5 (minimum 6.0 in each component)
East Asian Studies	88 (minimum 19 in Listening, 19 in Writing, 20 in Reading, 22 in Speaking)	IELTS 6.5 (minimum 6.0 in each component)
Economics	88 (minimum 19 in Listening, 19 in Writing, 20 in Reading, 22 in Speaking)	IELTS 6.5 (minimum 6.0 in each component)

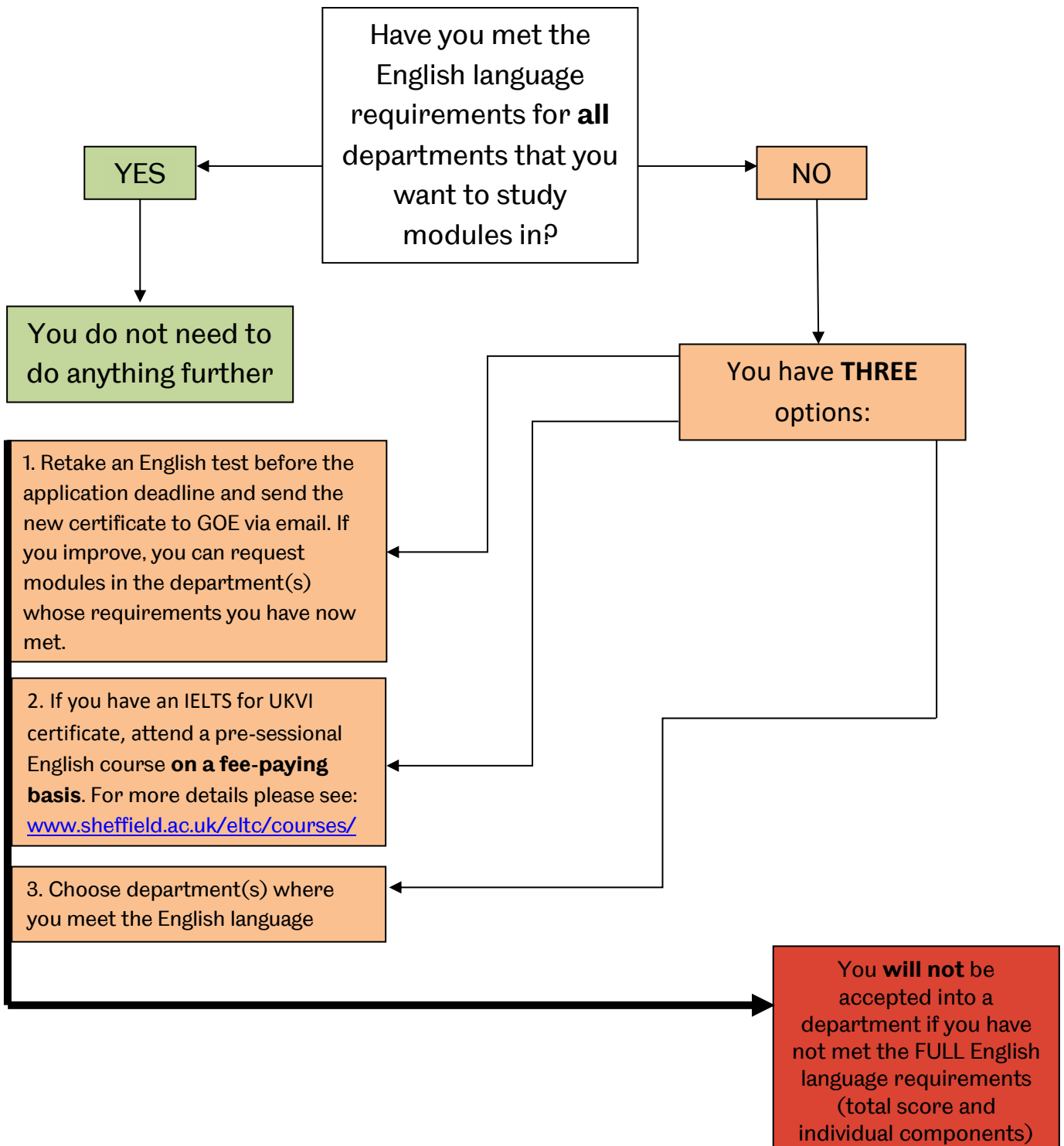
Electronic and Electrical Engineering	80 (minimum 17 in Listening, 17 in Writing, 18 in Reading, 20 in Speaking)	IELTS 6.0 (minimum 5.5 in each component)
English Language Teaching Centre	<p>Students at IELTS 5.0 and above will be able to join the regular pre-session on a fee-paying basis. No academic credit is offered for the pre-sessional. Please see the website for entry levels to the pre-sessional courses: https://www.sheffield.ac.uk/eltc/presessional/entry-requirements</p> <p>To study regular ELTC credit-bearing modules during the semester – TOEFL 79 or IELTS 6.0 (with no lower than 5.5 in each component): https://www.sheffield.ac.uk/eltc/credit</p>	
English	95 (minimum 21 in Listening, 22 in Writing, 22 in Reading, 23 in Speaking)	IELTS 7.0 (minimum 6.5 in each component)
Geography	88 (minimum 19 in Listening, 19 in Writing, 20 in Reading, 22 in Speaking)	IELTS 6.5 (minimum 6.0 in each component)
History	95 (minimum 21 in Listening, 22 in Writing, 22 in Reading, 23 in Speaking)	IELTS 7.0 (minimum 6.5 in each component)
Human Communication Sciences	103 (minimum 21 in Listening, 22 in Writing, 22 in Reading, 23 in Speaking)	IELTS 7.5 (minimum 6.5 in each component)
Journalism Studies	103 (minimum 22 in Listening, 24 in Writing, 24 in Reading, 25 in Speaking)	IELTS 7.5 (minimum 7.0 in each component)
Landscape	88 (minimum 19 in Listening, 19 in Writing, 20 in Reading, 22 in Speaking)	IELTS 6.5 (minimum 6.0 in each component)
Management School (Business)	88 (minimum 19 in Listening, 19 in Writing, 20 in Reading, 22 in Speaking)	IELTS 6.5 (minimum 6.0 in each component)
Materials Science and Engineering	88 (minimum 19 in Listening, 19 in Writing, 20 in Reading, 22 in Speaking)	IELTS 6.5 (minimum 6.0 in each component)
Mathematics and Statistics	88 (minimum 19 in Listening, 19 in Writing, 20 in Reading, 22 in Speaking)	IELTS 6.5 (minimum 6.0 in each component)
Mechanical Engineering	88 (minimum 19 in Listening, 19 in Writing, 20 in Reading, 22 in Speaking)	IELTS 6.5 (minimum 6.0 in each component)
Modern Languages Teaching Centre Arabic , French , German , Italian , Latin , Portuguese and Spanish	80 (minimum 17 in Listening, 17 in Writing, 18 in Reading, 20 in Speaking)	IELTS 6.0 (minimum 5.5 in each component)
Molecular Biology and Biotechnology	88 (minimum 19 in Listening, 19 in Writing, 20 in Reading, 22 in Speaking)	IELTS 6.5 (minimum 6.0 in each component)
Music	88 (minimum 19 in Listening, 19 in Writing, 20 in Reading, 22 in Speaking)	IELTS 6.5 (minimum 6.0 in each component)
Philosophy	88 (minimum 19 in Listening, 19 in Writing, 20 in Reading, 22 in Speaking)	IELTS 6.5 (minimum 6.0 in each component)
Physics	88 (minimum 19 in Listening, 19 in Writing, 20 in Reading, 22 in Speaking)	IELTS 6.5 (minimum 6.0 in each component)
Politics	95 (minimum 19 in Listening, 19 in Writing, 20 in Reading, 22 in Speaking)	IELTS 7.0 (minimum 6.0 in each component)
Psychology	88 (minimum 19 in Listening, 19 in Writing, 20 in Reading, 22 in Speaking)	IELTS 6.5 (minimum 6.0 in each component)
Sociological Studies	88 (minimum 19 in Listening, 19 in Writing, 20 in Reading, 22 in Speaking)	IELTS 6.5 (minimum 6.0 in each component)
Urban Studies and Planning	88 (minimum 19 in Listening, 19 in Writing, 20 in Reading, 22 in Speaking)	IELTS 6.5 (minimum 6.0 in each component)



The University
Of Sheffield.

Study Abroad Programme.

English Language proficiency flowchart



Frequently Asked Questions

I am planning on sitting the English test again before the deadline, should I apply now or wait?

We would recommend that you sit a test in March/April for September entry (and August/September for February entry) so that you have the highest possible score to apply with, and in good time to meet the application deadline (1st May and 1st October)

I don't meet the English Language Requirements, can I still be nominated/apply?

If you do not plan on taking another English Language test and you do not meet the entire score (overall and component) for the department(s) you want to study in, then you will only be considered for an offer conditional on meeting our English Language Requirements. If you do not meet the requirements, you will **not** be admitted.

If you have taken an IELTS for UKVI (Academic) you can consider the ELTC pre-session courses, which have fees.

If I study modules in the ELTC during the semester, do I have to pay extra fees?

No, if you are an exchange student you do not have to pay additional fees to study [credit modules](#) if you have IELTS 6.0 (5.5 minimum in each component) or equivalent.

However, if you choose to study a [full-time ELTC course](#) for a semester, you will be charged tuition fees and please note these courses are not available for credit.

If I meet the overall score but not each component(s), do I have to sit another test?

Yes, because you have not met the required score in full – overall score **and** components.

What is the latest date I can submit my new certificate?

We cannot make you an unconditional offer if you do not meet the minimum requirement. Additionally, we cannot issue visa documentation without an English Language certificate at the appropriate level. Please refer to the first question above.

I will study in the ELTC to improve my score; can you still process my application?

Yes. In order to attend an [ELTC pre-session course](#), you will need to have first completed your study abroad application and been made an offer (either conditional or unconditional).

You must apply for the Summer School as soon as you can and meet their deadlines. Please note that the ELTC sometimes close the applications early if the courses are full.

Please check the [length of the course](#) you need to study.

Do you accept MyBest™ TOEFL scores?

No, you must satisfy our English language requirements with scores achieved on a single date.