

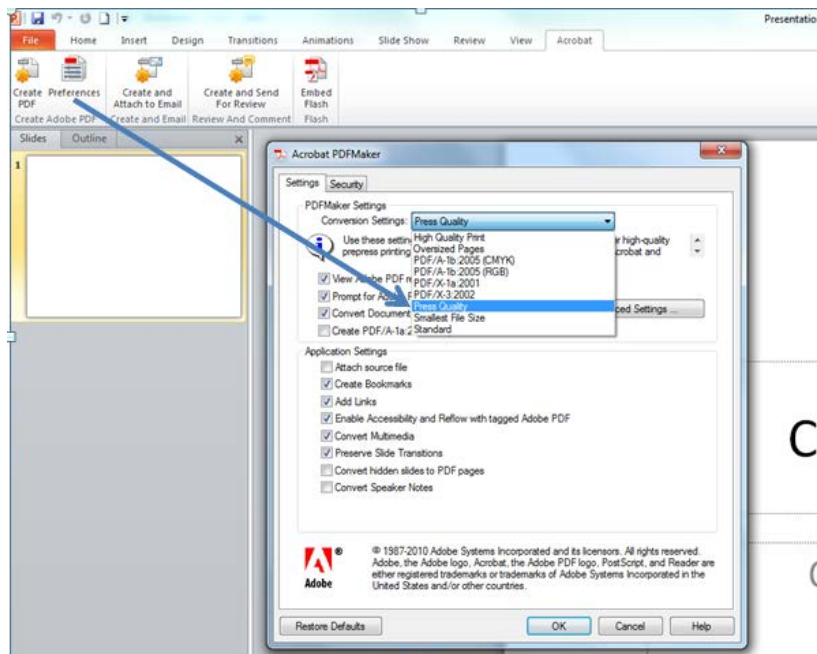
## Poster Competition

# How to submit your entry to the KRI Poster Competition 2018

- Your poster should be **designed in A0 portrait\*** format (set 'Page Set Up' to width = 84.09cm, height = 118.91cm). After a review process, the highest ranked 10 posters will be printed on your behalf and at our expense, in A0 portrait format.
- Your poster should be saved and submitted in **A0 pdf format** regardless of what software (e.g. Powerpoint, Adobe Illustrator, Photoshop LaTeX ...etc) you used to create it. This is so that all panel members can view the file correctly, and so the any printing is true to design.
- Bear in mind, the posters will be judged by viewing on a computer screen so any tiny detail that will not be visible in a smaller format will be lost.
- The file size **should be no larger than 10Mb**, to avoid difficulties in downloading the file on slow internet connections off-site. This may require a careful use of images. (Tips to reduce the file size: <http://www.wikihow.com/Reduce-PDF-File-Size>)

\*NB: Posters in landscape format will not fit onto the poster boards - if your poster cannot be properly displayed, you may be asked to withdraw from the competition.

If you convert to pdf using embedded acrobat, select '**Press Quality**' from the preferences menu:



Your competition entry should be emailed to [thinkahead@sheffield.ac.uk](mailto:thinkahead@sheffield.ac.uk)